

Rat ALPP Protein, His Tag (active enzyme)

Catalog # ALP-R52H4



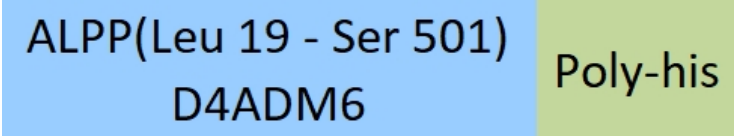
Synonym

PLAP

Source

Rat ALPP Protein, His Tag(ALP-R52H4) is expressed from human 293 cells (HEK293). It contains AA Leu 19 - Ser 501 (Accession # [D4ADM6](#)).
Predicted N-terminus: Leu 19

Molecular Characterization



This protein carries a polyhistidine tag at the C-terminus.
The protein has a calculated MW of 54.4 kDa. The protein migrates as 60-65 kDa when calibrated against [Star Ribbon Pre-stained Protein Marker](#) under reducing (R) condition (SDS-PAGE) due to glycosylation.

Endotoxin

Less than 1.0 EU per µg by the LAL method / rFC method.

Purity

>90% as determined by SDS-PAGE.

Formulation

Lyophilized from 0.22 µm filtered solution in 20 mM Tris, 150 mM NaCl, pH7.5 with trehalose as protectant.

Contact us for customized product form or formulation.

Reconstitution

Please see Certificate of Analysis for specific instructions.

For best performance, we strongly recommend you to follow the reconstitution protocol provided in the CoA.

Storage

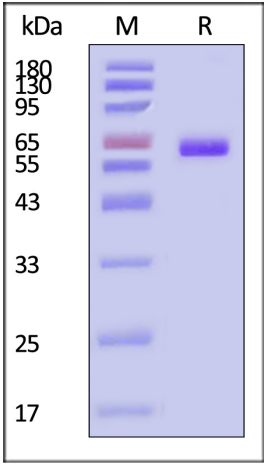
For long term storage, the product should be stored at lyophilized state at -20°C or lower.

Please avoid repeated freeze-thaw cycles.

This product is stable after storage at:

- -20°C to -70°C for 12 months in lyophilized state;
- -70°C for 3 months under sterile conditions after reconstitution.

SDS-PAGE



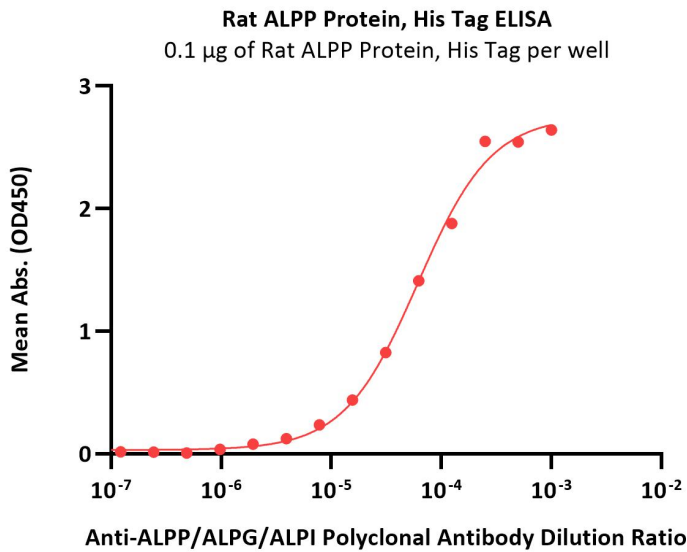
Rat ALPP Protein, His Tag on SDS-PAGE under reducing (R) condition. The gel was stained with Coomassie Blue. The purity of the protein is greater than 90% (With [Star Ribbon Pre-stained Protein Marker](#)).

Bioactivity-ELISA



Rat ALPP Protein, His Tag (active enzyme)

Catalog # ALP-R52H4



Immobilized Rat ALPP Protein, His Tag (Cat. No. ALP-R52H4) at 1 µg/mL (100 µL/well) can bind various dilution ratio of Anti-ALPP/ALPG/ALPI Polyclonal Antibody (QC tested).

Bioactivity

Measured by its ability to cleave a fluorogenic substrate, 4-Methylumbelliferyl phosphate (4-MUP). The specific activity is >1200 pmol/min/µg (QC tested).

Background

ALPP is highly expressed in a variety of solid tumors, including ovarian, endometrial, germ cell, non-small cell lung, bladder and gastric cancers. In normal tissues, it is expressed in the placenta and low in lung and reproductive tissues. ALPP is a membrane protein and exists as a homodimer.

Discounts, Gifts,
and more!

