

Synonym

ANGPTL7,CDT6

Source

Human ANGPTL7, Mouse IgG2a Fc Tag(AN7-H5252) is expressed from human 293 cells (HEK293). It contains AA Gln 27 - Pro 346 (Accession # [O43827-1](#)).
Predicted N-terminus: Gln 27

Molecular Characterization

ANGPTL7(Gln 27 - Pro 346) O43827-1	mFc(Glu 98 - Lys 330) P01863
---------------------------------------	---------------------------------

This protein carries a mouse IgG2a Fc tag at the C-terminus.

The protein has a calculated MW of 64.1 kDa. The protein migrates as 60 kDa and 76 kDa under reducing (R) condition (SDS-PAGE) due to glycosylation.

Endotoxin

Less than 1.0 EU per µg by the LAL method / rFC method.

Purity

>90% as determined by SDS-PAGE.

Formulation

Lyophilized from 0.22 µm filtered solution in Tris with Glycine, Arginine and NaCl, pH7.5 with trehalose as protectant.

Contact us for customized product form or formulation.

Reconstitution

Please see Certificate of Analysis for specific instructions.

For best performance, we strongly recommend you to follow the reconstitution protocol provided in the CoA.

Storage

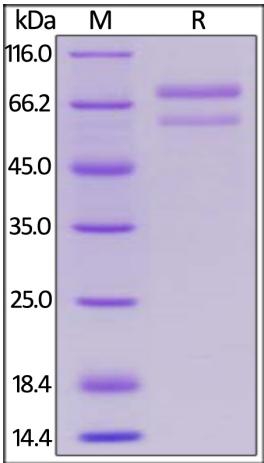
For long term storage, the product should be stored at lyophilized state at -20°C or lower.

Please avoid repeated freeze-thaw cycles.

This product is stable after storage at:

- -20°C to -70°C for 12 months in lyophilized state;
- -70°C for 3 months under sterile conditions after reconstitution.

SDS-PAGE



Human ANGPTL7, Mouse IgG2a Fc Tag on SDS-PAGE under reducing (R) condition. The gel was stained with Coomassie Blue. The purity of the protein is greater than 90%.

Background

Angiopoietin-like 7 (ANGPTL7) is also known as Corneal-Derived Transcript 6 (CDT6), and is a secreted glycoprotein that is structurally related to the angiopoietins. It is expressed in the corneal stroma, trabecular meshwork, and sclera and is elevated in glaucoma aqueous humor. Recently, ANGPTL proteins, including ANGPTL-2, -3, -4, -5 and -7, are identified as growth factors in combination with SCF, Thrombopoietin, IGF-II and FGF acidic that enhance the expansion and engraftment of human and mouse hematopoietic stem cells.



Human ANGPTL7 / CDT6 Protein, Mouse IgG2a Fc Tag

Catalog # AN7-H5252

