

Synonym

Apolipoprotein E,APOE,Apo-E

Source

Cynomolgus Apolipoprotein E Protein, His Tag(APE-C52H7) is expressed from human 293 cells (HEK293). It contains AA Lys 19 - His 317 (Accession # [P10517](#)).

Predicted N-terminus: Lys 19

Molecular Characterization

APOE(Lys 19 - His 317)
P10517

Poly-his

This protein carries a polyhistidine tag at the C-terminus.

The protein has a calculated MW of 35.9 kDa. The protein migrates as 35-40 kDa under reducing (R) condition (SDS-PAGE) due to glycosylation.

Endotoxin

Less than 1.0 EU per µg by the LAL method / rFC method.

Purity

>90% as determined by SDS-PAGE.

Formulation

Lyophilized from 0.22 µm filtered solution in PBS, pH7.4 with trehalose as protectant.

Contact us for customized product form or formulation.

Reconstitution

Please see Certificate of Analysis for specific instructions.

For best performance, we strongly recommend you to follow the reconstitution protocol provided in the CoA.

Storage

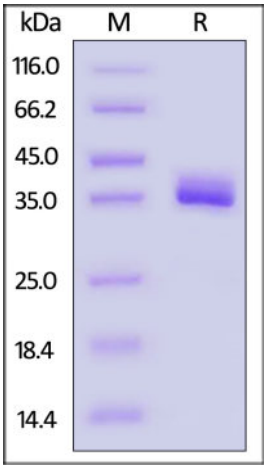
For long term storage, the product should be stored at lyophilized state at -20°C or lower.

Please avoid repeated freeze-thaw cycles.

This product is stable after storage at:

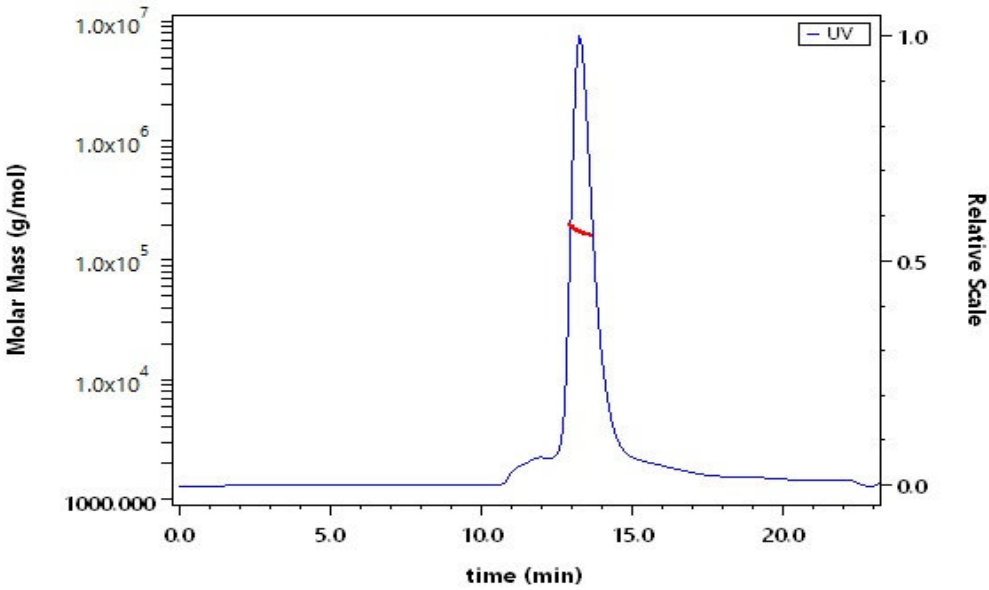
- 20°C to -70°C for 12 months in lyophilized state;
- 70°C for 3 months under sterile conditions after reconstitution.

SDS-PAGE



Cynomolgus Apolipoprotein E Protein, His Tag on SDS-PAGE under reducing (R) condition. The gel was stained with Coomassie Blue. The purity of the protein is greater than 90%.

SEC-MALS



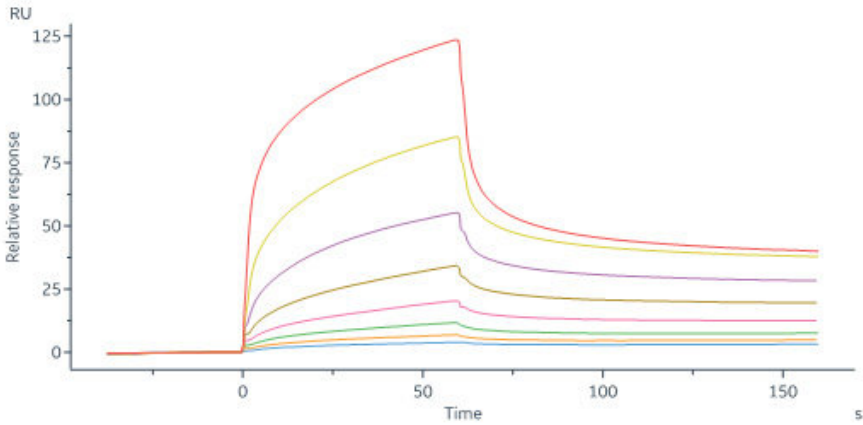
The purity of Cynomolgus Apolipoprotein E Protein, His Tag (Cat. No. APE-C52H7) is more than 85% and the molecular weight of this protein is around 165-185 kDa verified by SEC-MALS.

[Report](#)

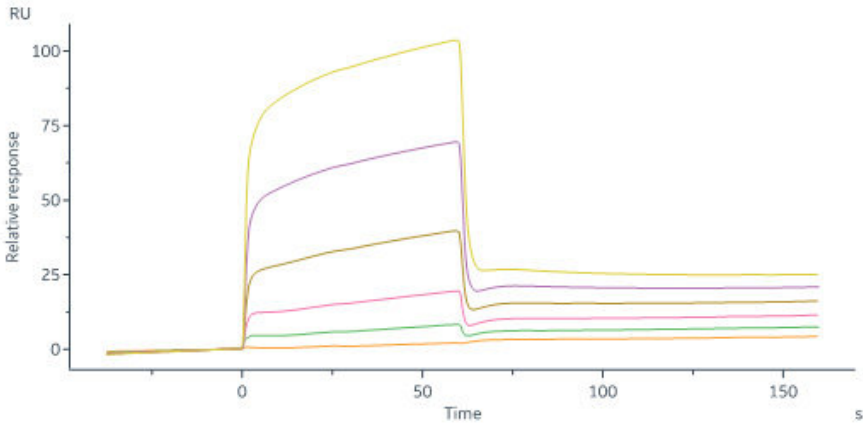
Bioactivity-SPR

Discounts, Gifts,
and more!





Cynomolgus TREM2, His Tag (Cat. No. TR2-C52H3) immobilized on CM5 Chip can bind Cynomolgus Apolipoprotein E Protein, His Tag (Cat. No. APE-C52H7) with an affinity constant of 7.78 μ M as determined in a SPR assay (Biacore 8K) (QC tested).



Cynomolgus Apolipoprotein E Protein, His Tag (Cat. No. APE-C52H7) immobilized on CM5 Chip can bind Cynomolgus TREM2, His Tag (Cat. No. TR2-C52H3) with an affinity constant of 4.54 μ M as determined in a SPR assay (Biacore 8K) (Routinely tested).

Background

APOE is an apolipoprotein, a protein associating with lipid particles, that mainly functions in lipoprotein-mediated lipid transport between organs via the plasma and interstitial fluids. APOE is a core component of plasma lipoproteins and is involved in their production, conversion and clearance. Apolipoproteins are amphipathic molecules that interact both with lipids of the lipoprotein particle core and the aqueous environment of the plasma. As such, APOE associates with chylomicrons, chylomicron remnants, very low density lipoproteins (VLDL) and intermediate density lipoproteins (IDL) but shows a preferential binding to high-density lipoproteins (HDL). It also binds a wide range of cellular receptors including the LDL receptor/LDLR, the LDL receptor-related proteins LRP1, LRP2 and LRP8 and the very low-density lipoprotein receptor/VLDLR that mediate the cellular uptake of the APOE-containing lipoprotein particles.

