

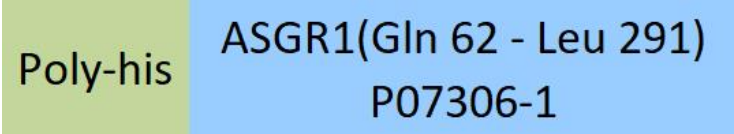
Synonym

ASGP-R 1, ASGPR 1, C-type lectin domain family 4 member H1, Hepatic lectin H1, HL-1

Source

Human ASGR1 Protein, His Tag(AS1-H5243) is expressed from human 293 cells (HEK293). It contains AA Gln 62 - Leu 291 (Accession # [P07306-1](#)). Predicted N-terminus: His

Molecular Characterization



This protein carries a polyhistidine tag at the N-terminus.

The protein has a calculated MW of 28.3 kDa. The protein migrates as 36-45 kDa when calibrated against [Star Ribbon Pre-stained Protein Marker](#) under reducing (R) condition (SDS-PAGE) due to glycosylation.

Endotoxin

Less than 1.0 EU per µg by the LAL method / rFC method.

Purity

>90% as determined by SDS-PAGE.

Formulation

Lyophilized from 0.22 µm filtered solution in PBS, 0.5 M Arginine, pH7.4 with trehalose as protectant.

Contact us for customized product form or formulation.

Reconstitution

Please see Certificate of Analysis for specific instructions.

For best performance, we strongly recommend you to follow the reconstitution protocol provided in the CoA.

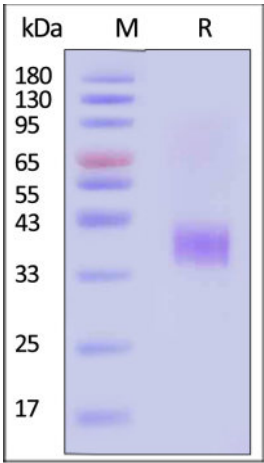
Storage

For long term storage, the product should be stored at lyophilized state at -20°C or lower.

Please avoid repeated freeze-thaw cycles.

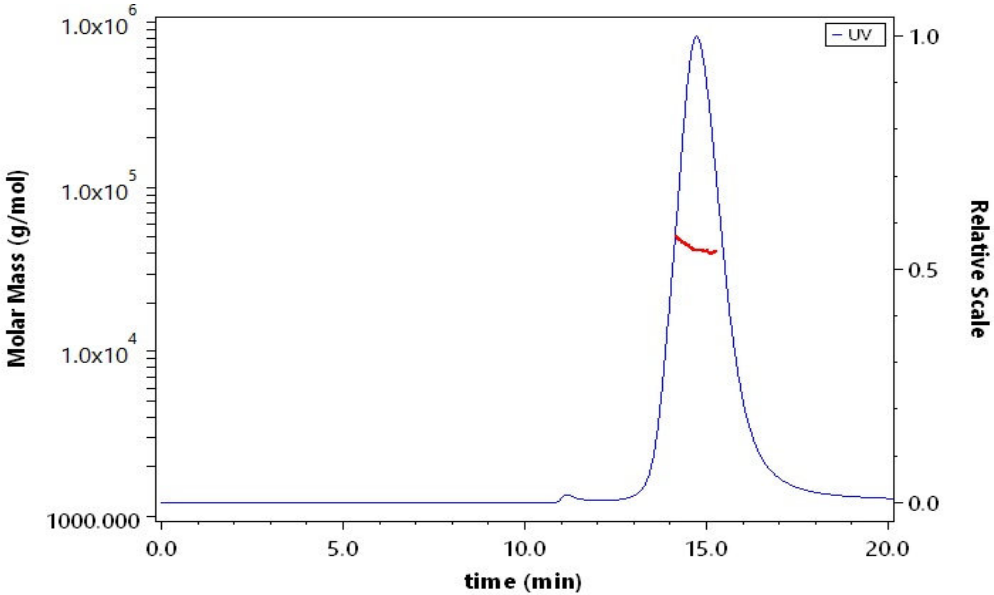
- This product is stable after storage at:
- 20°C to -70°C for 12 months in lyophilized state;
 - 70°C for 3 months under sterile conditions after reconstitution.

SDS-PAGE



Human ASGR1 Protein, His Tag on SDS-PAGE under reducing (R) condition. The gel was stained with Coomassie Blue. The purity of the protein is greater than 90% (With [Star Ribbon Pre-stained Protein Marker](#)).

SEC-MALS

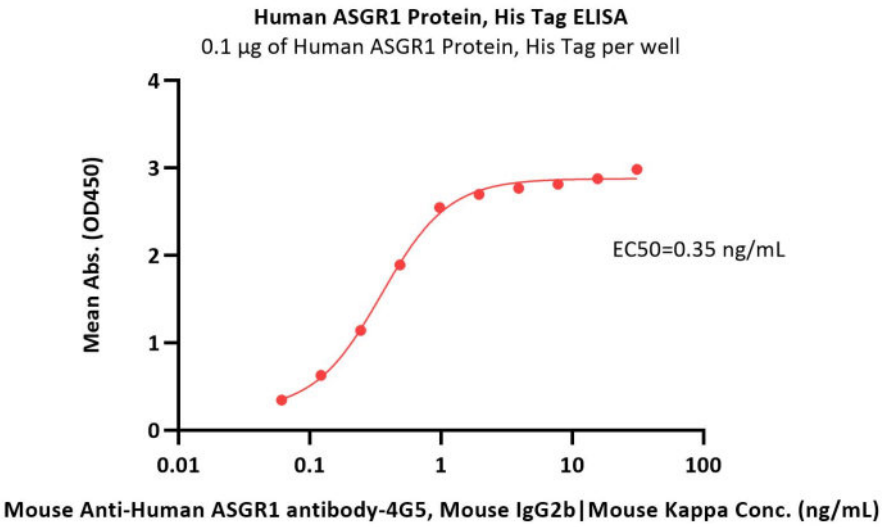


The purity of Human ASGR1 Protein, His Tag (Cat. No. AS1-H5243) is more than 85% and the molecular weight of this protein is around 38-52 kDa verified by SEC-MALS.

[Report](#)

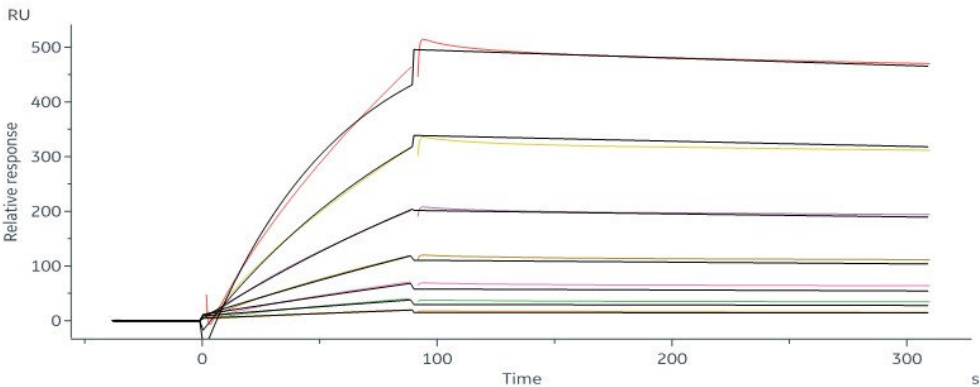
Bioactivity-ELISA





Immobilized Human ASGR1 Protein, His Tag (Cat. No. AS1-H5243) at 1 µg/mL (100 µL/well) can bind Mouse Anti-Human ASGR1 antibody-4G5, Mouse IgG2b|Mouse Kappa with a linear range of 0.06-1 ng/mL (QC tested).

Bioactivity-SPR



Human ASGR1 / ASGPR1 Protein, His Tag (Cat. No. AS1-H5243) immobilized on CM5 Chip can bind SARS-CoV-2 S1 protein, His Tag with an affinity constant of 50.2 nM as determined in a SPR assay (Biacore 8K) (Routinely tested).

Background

ASGPR, a transmembrane C-type lectin, recognizes a wide variety of ligands that contain either terminal galactose (Gal) or N-acetylgalactosamine (GalNAc) residues and has been identified as a highly selective receptor on hepatocytes. The ASGR is composed of both a major (ASGR1) and minor subunit (ASGR2). ASGR1 has been shown to be efficiently targeted to the plasma membrane and to undergo constitutive endocytosis and recycling and found mainly expressed in the human liver.

Discounts, Gifts,
and more!

