

Synonym

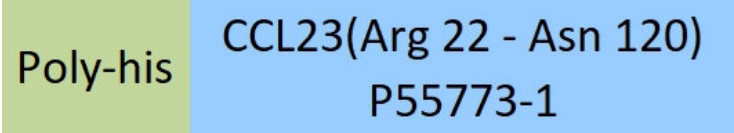
CK-BETA-8, CKb8, Ckb-8, Ckb-8-1, MIP-3, MIP3, MPIF-1, SCYA23, hmrp-2a

Source

Human CCL23 Protein, His Tag(CC3-H5244) is expressed from human 293 cells (HEK293). It contains AA Arg 22 - Asn 120 (Accession # [P55773-1](#)).

Predicted N-terminus: His

Molecular Characterization



This protein carries a polyhistidine tag at the N-terminus.

The protein has a calculated MW of 13.3 kDa. The protein migrates as 12-17 kDa when calibrated against [Star Ribbon Pre-stained Protein Marker](#) under reducing (R) condition (SDS-PAGE) due to glycosylation.

Endotoxin

Less than 1.0 EU per µg by the LAL method / rFC method.

Purity

>90% as determined by SDS-PAGE.

>90% as determined by SEC-MALS.

Formulation

Lyophilized from 0.22 µm filtered solution in PBS, pH7.4 with trehalose as protectant.

Contact us for customized product form or formulation.

Reconstitution

Please see Certificate of Analysis for specific instructions.

For best performance, we strongly recommend you to follow the reconstitution protocol provided in the CoA.

Storage

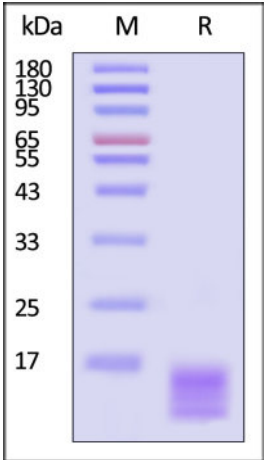
For long term storage, the product should be stored at lyophilized state at -20°C or lower.

Please avoid repeated freeze-thaw cycles.

This product is stable after storage at:

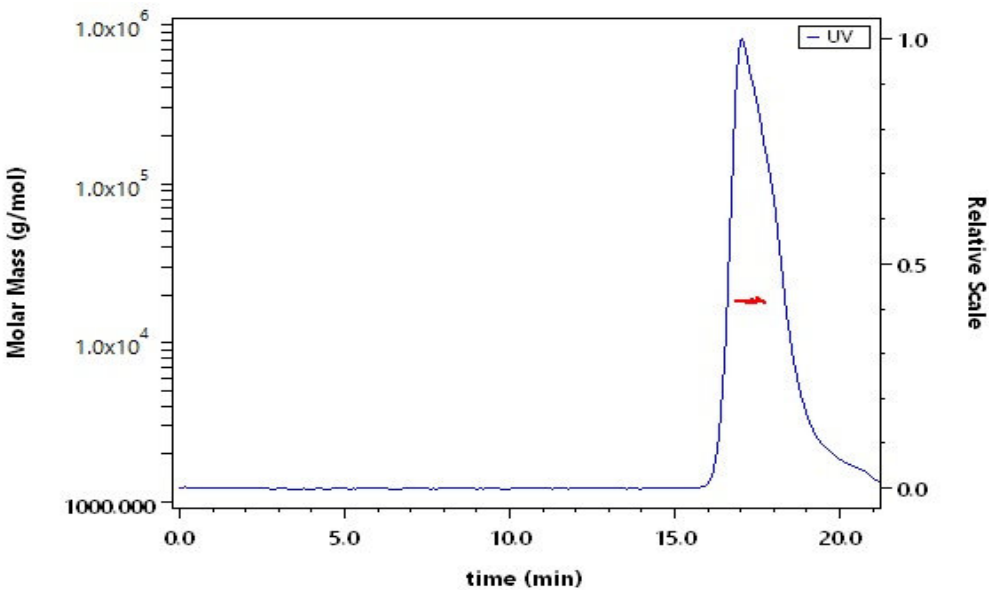
- 20°C to -70°C for 12 months in lyophilized state;
- 70°C for 3 months under sterile conditions after reconstitution.

SDS-PAGE



Human CCL23 Protein, His Tag on SDS-PAGE under reducing (R) condition. The gel was stained with Coomassie Blue. The purity of the protein is greater than 90% (With [Star Ribbon Pre-stained Protein Marker](#)).

SEC-MALS

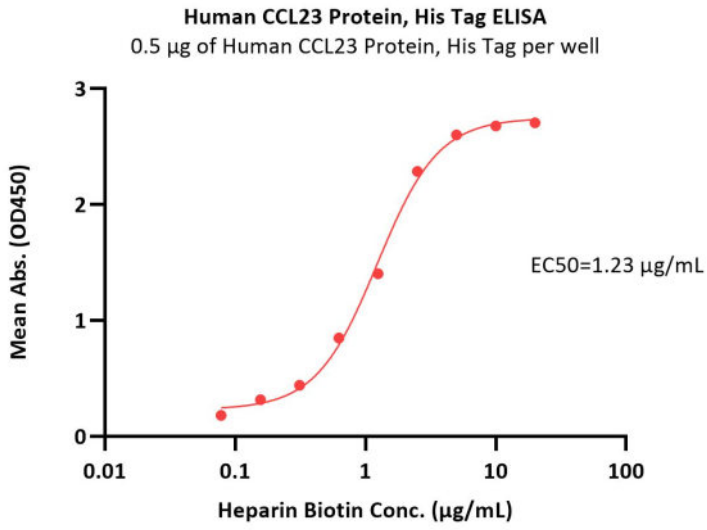


The purity of Human CCL23 Protein, His Tag (Cat. No. CC3-H5244) is more than 90% and the molecular weight of this protein is around 15-21 kDa verified by SEC-MALS.

[Report](#)

Bioactivity-ELISA





Immobilized Human CCL23 Protein, His Tag (Cat. No. CC3-H5244) at 5 µg/mL (100 µL/well) can bind Heparin Biotin with a linear range of 0.078-2.5 µg/mL (QC tested).

Background

This gene is one of several chemokine genes clustered on the q-arm of chromosome 17. Chemokines form a superfamily of secreted proteins involved in immunoregulatory and inflammatory processes. The superfamily is divided into four subfamilies based on the arrangement of the N-terminal cysteine residues of the mature peptide. This chemokine, a member of the CC subfamily, displays chemotactic activity on resting T lymphocytes and monocytes, lower activity on neutrophils and no activity on activated T lymphocytes. The protein is also a strong suppressor of colony formation by a multipotential hematopoietic progenitor cell line. In addition, the product of this gene is a potent agonist of the chemokine (C-C motif) receptor 1. Alternative splicing results in multiple transcript variants that encode different isoforms.

Discounts, Gifts,
and more!

