

Human CCR4 Full Length Protein, Flag,His Tag (Detergent)

Catalog # CC4-H52D3



Synonym

CKR4, K5-5,CD194,CMKBR4,ChemR13,CC-CKR-4,HGCN:14099

Source

Human CCR4 Full Length Protein, Flag,His Tag(CC4-H52D3) is expressed from human 293 cells (HEK293). It contains AA Asn 2 - Leu 360 (Accession # [P51679-1](#)).
Predicted N-terminus: Asp

Molecular Characterization

This protein carries a flag tag at the N-terminus and a polyhistidine tag at the C-terminus.
The protein has a calculated MW of 60.3 kDa.

Endotoxin

Less than 1.0 EU per µg by the LAL method / rFC method.

Purity

>80% as determined by SDS-PAGE.

Formulation

This product is not suitable for cell based experiments due to cytotoxicity of DDM.
DDM and CHS are INDISPENSABLE to keep membrane protein soluble and active, under no circumstance should you remove DDM and CHS.
DDM/CHS buffer (DC-11) is sold separately and not included in protein, and please contact us if you need the buffer.
If glycerol is not compatible to your application, remove glycerol just before immediate experiment, and NEVER store glycerol-free protein solution.
Supplied as 0.2 µm filtered solution in 50 mM HEPES, 150 mM NaCl, DDM, CHS,pH7.5 with glycerol as protectant.
Contact us for customized product form or formulation.

Shipping

This product is supplied and shipped with dry ice, please inquire the shipping cost.

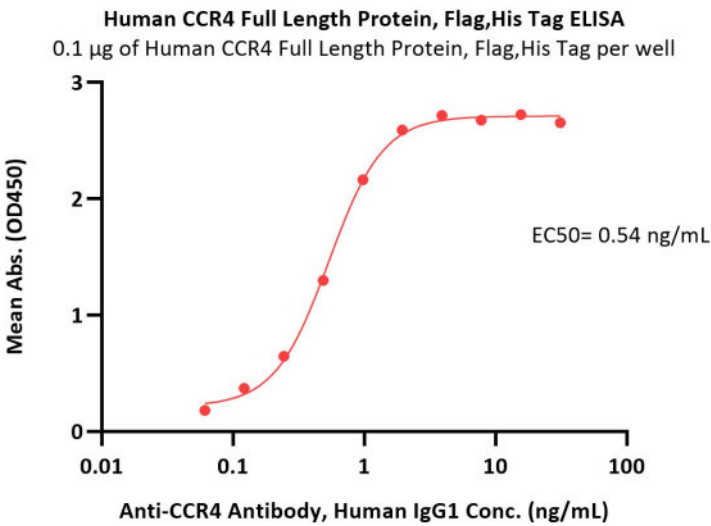
Storage

Please avoid repeated freeze-thaw cycles.
This product is stable after storage at:

- The product MUST be stored at -70°C or lower upon receipt;
- -70°C for 3 months under sterile conditions.

*The DDM/CHS buffer (Cat. No. [DC-11](#)) is sold separately and not included in protein, you can follow [this link](#) for product information.

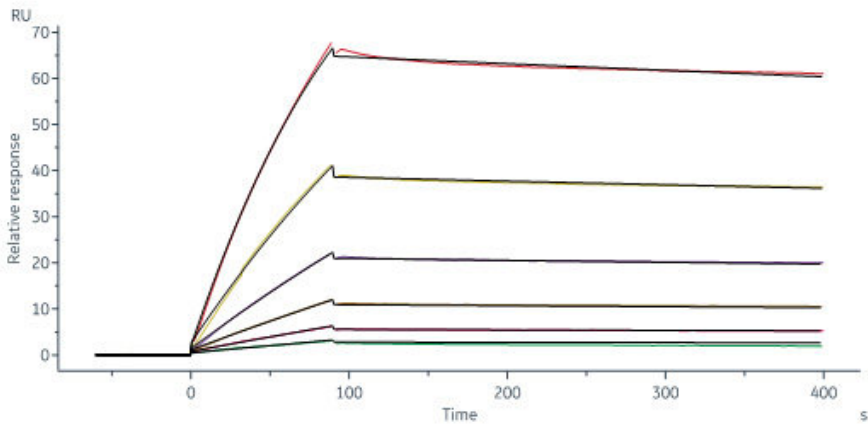
Bioactivity-ELISA



Immobilized Human CCR4 Full Length Protein, Flag,His Tag (Cat. No. CC4-H52D3) at 1 µg/mL (100 µL/well) can bind Anti-CCR4 Antibody, Human IgG1 with a linear range of 0.06-1 ng/mL (QC tested).



Bioactivity-SPR



Anti-CCR4 Antibody, Human IgG1 captured on Protein A Chip can bind Human CCR4 Full Length Protein, Flag,His Tag (Cat. CC4-H52D3) with an affinity constant of 17.3 nM as determined in a SPR assay (in presence of DDM and CHS) (Biacore 8K) (Routinely tested).

Background

C-C chemokine receptor type 4 is a receptor for the following CC chemokines: CCL2, CCL4, CCL5, CCL17, CCL22, belongs to the G protein-coupled receptor family. Chemokines are a group of small polypeptide, structurally related molecules that regulate cell trafficking of various types of leukocytes. The chemokines also play fundamental roles in the development, homeostasis, and function of the immune system, and they have effects on cells of the central nervous system as well as on endothelial cells involved in angiogenesis or angiostasis. CCR4 is often expressed on leukemic cells in cutaneous T-cell lymphoma (CTCL). Mogamulizumab is a humanized monoclonal antibody targeted at CCR4and is an investigational drug for CTCL.

Discounts, Gifts,
and more!

