

Cynomolgus CD6 Protein, His Tag (MALS verified)

Catalog # CD6-C52H3



Synonym

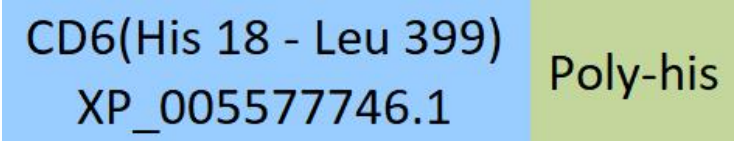
CD6,TP120,T12

Source

Cynomolgus CD6 Protein, His Tag(CD6-C52H3) is expressed from human 293 cells (HEK293). It contains AA His 18 - Leu 399 (Accession # [XP_005577746.1](#)).

Predicted N-terminus: His 18

Molecular Characterization



This protein carries a polyhistidine tag at the C-terminus.

The protein has a calculated MW of 42.8 kDa. The protein migrates as 55-80 kDa when calibrated against [Star Ribbon Pre-stained Protein Marker](#) under reducing (R) condition (SDS-PAGE) due to glycosylation.

Endotoxin

Less than 1.0 EU per µg by the LAL method / rFC method.

Purity

>90% as determined by SDS-PAGE.

>95% as determined by SEC-MALS.

Formulation

Lyophilized from 0.22 µm filtered solution in PBS, pH7.4 with trehalose as protectant.

Contact us for customized product form or formulation.

Reconstitution

Please see Certificate of Analysis for specific instructions.

For best performance, we strongly recommend you to follow the reconstitution protocol provided in the CoA.

Storage

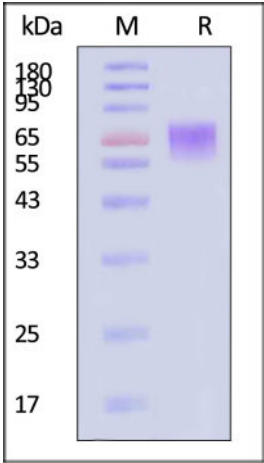
For long term storage, the product should be stored at lyophilized state at -20°C or lower.

Please avoid repeated freeze-thaw cycles.

This product is stable after storage at:

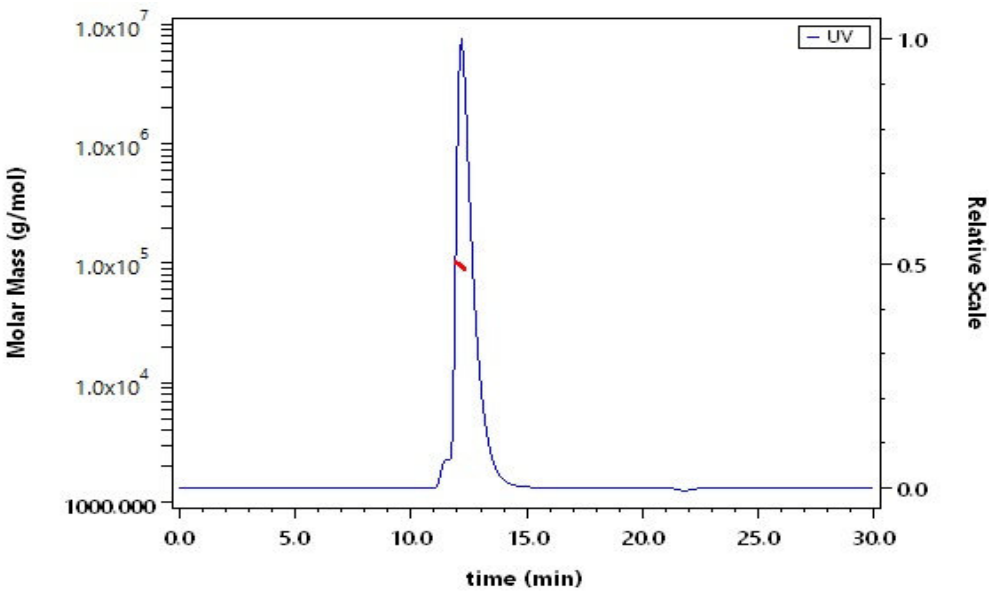
- -20°C to -70°C for 12 months in lyophilized state;
- -70°C for 3 months under sterile conditions after reconstitution.

SDS-PAGE



Cynomolgus CD6 Protein, His Tag on SDS-PAGE under reducing (R) condition. The gel was stained with Coomassie Blue. The purity of the protein is greater than 90% (With [Star Ribbon Pre-stained Protein Marker](#)).

SEC-MALS



The purity of Cynomolgus CD6 Protein, His Tag (Cat. No. CD6-C52H3) is more than 95% and the molecular weight of this protein is around 80-100 kDa verified by SEC-MALS.

[Report](#)

Bioactivity-ELISA

CD6 ELISA



Cynomolgus CD6 Protein, His Tag (MALS verified)

Catalog # CD6-C52H3



Immobilized Human ALCAM, Fc Tag (Cat. No. CD6-H5259) at 5 µg/mL (100 µL/well) can bind Cynomolgus CD6 Protein, His Tag (Cat. No. CD6-C52H3) with a linear range of 0.02-0.625 µg/mL (QC tested).

Background

CD6 (Cluster of Differentiation 6) is a cell surface glycoprotein that is involved in T cell activation and a member of the scavenger receptor cysteine rich protein superfamily (SRCRSF). CD6 is expressed at low levels on immature thymocytes and at high levels on mature thymocytes. The majority of peripheral blood T cells, a subset of B cells, and a subset of neuronal cells express CD6. CD6 appears to play a role as both a costimulatory molecule in T cell activation and as an adhesion receptor. Studies demonstrating a mitogenic effect for T cells with some CD6 specific monoclonal antibodies, in conjunction with either accessory cells or PMA and anti-CD2 mAb, support the concept of CD6 as a co stimulatory molecule.

