

Synonym

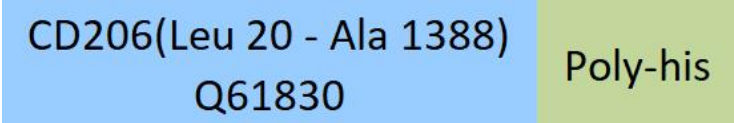
MMR,CD206,hMR,MRC1,CLEC13D,CLEC13DL,MRC1L1

Source

Mouse CD206 Protein, His Tag(CD6-M52H7) is expressed from human 293 cells (HEK293). It contains AA Leu 20 - Ala 1388 (Accession # [Q61830](#)).

Predicted N-terminus: Leu 20

Molecular Characterization



This protein carries a polyhistidine tag at the C-terminus.

The protein has a calculated MW of 157.3 kDa. The protein migrates as 150-180 kDa when calibrated against [Star Ribbon Pre-stained Protein Marker](#) under reducing (R) condition (SDS-PAGE) due to glycosylation.

Endotoxin

Less than 1.0 EU per µg by the LAL method / rFC method.

Purity

>90% as determined by SDS-PAGE.

>95% as determined by SEC-HPLC.

Formulation

Lyophilized from 0.22 µm filtered solution in PBS, pH7.4 with trehalose as protectant.

Contact us for customized product form or formulation.

Reconstitution

Please see Certificate of Analysis for specific instructions.

*For best performance, we strongly recommend you to follow the reconstitution protocol provided in the CoA.*

Storage

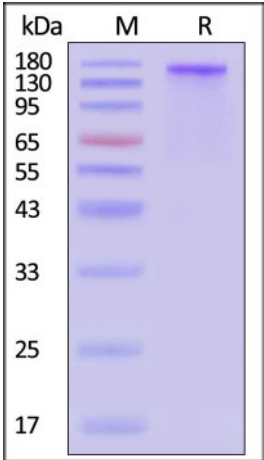
For long term storage, the product should be stored at lyophilized state at -20°C or lower.

*Please avoid repeated freeze-thaw cycles.*

This product is stable after storage at:

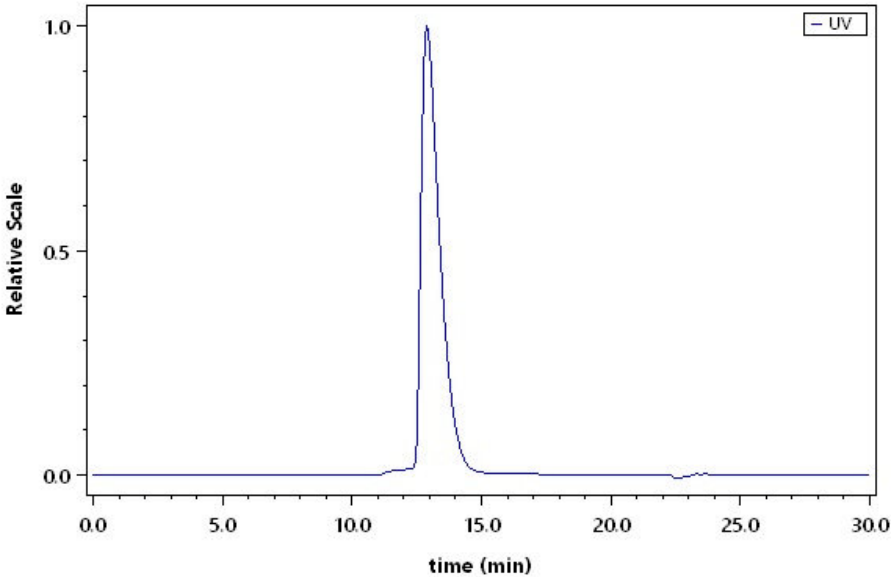
- -20°C to -70°C for 12 months in lyophilized state;
- -70°C for 3 months under sterile conditions after reconstitution.

SDS-PAGE



Mouse CD206 Protein, His Tag on SDS-PAGE under reducing (R) condition. The gel was stained with Coomassie Blue. The purity of the protein is greater than 90% (With [Star Ribbon Pre-stained Protein Marker](#)).

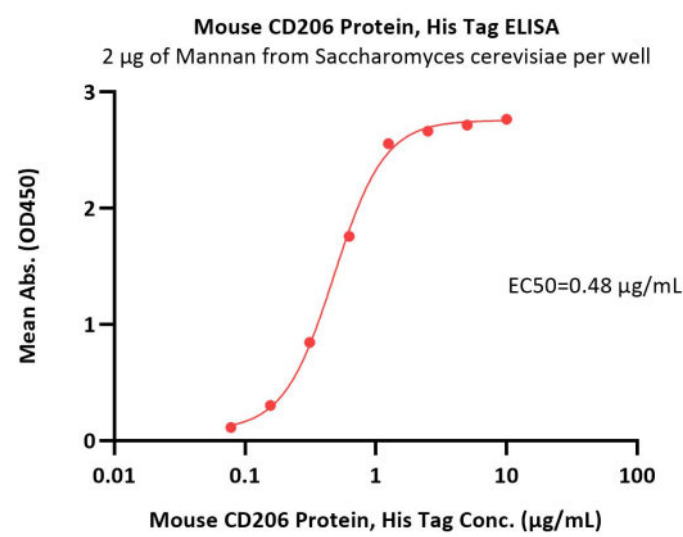
SEC-HPLC



The purity of Mouse CD206 Protein, His Tag (Cat. No. CD6-M52H7) was greater than 95% as determined by SEC-HPLC.

Bioactivity-ELISA





Immobilized Mannan from *Saccharomyces cerevisiae* at 20 µg/mL (100 µL/well) can bind Mouse CD206 Protein, His Tag (Cat. No. CD6-M52H7) with a linear range of 0.078-1.25 µg/mL (QC tested).

Background

Mrc1 is a conserved checkpoint mediator protein that transduces the replication stress signal to the downstream effector kinase. Mrc1 and its vertebrate homologue Claspin serve as a mediator for replication stress checkpoint signaling, receiving the signal from Mec1/Rad3/ATR sensor kinase and transmitting it to the effector Rad53/Cds1/Chk1 kinase. The loss of mrc1 checkpoint activity results in the aberrant activation of late/dormant origins in the presence of hydroxyurea. Tumor-associated macrophages (TAMs) expressing the multi-ligand endocytic receptor mannose receptor (CD206/MRC1) contribute to tumor immunosuppression, angiogenesis, metastasis, and relapse.

