

Synonym

CD7,GP40,TP41,LEU-9,Tp40

Source

Human CD7 Protein, Llama IgG2b Fc Tag(CD7-H5258) is expressed from human 293 cells (HEK293). It contains AA Ala 26 - Pro 180 (Accession # [P09564-1](#)).
Predicted N-terminus: Glu

Molecular Characterization

LlamaFc(Glu1 - Ser243) AAX73259.1	CD7(Ala 26 - Pro 180) P09564-1
--------------------------------------	-----------------------------------

This protein carries a llama IgG2b Fc tag at the N-terminus.
The protein has a calculated MW of 44.3 kDa. The protein migrates as 55-60 kDa under reducing (R) condition (SDS-PAGE) due to glycosylation.

Endotoxin

Less than 0.01 EU per µg by the LAL method / rFC method.

Purity

>95% as determined by SDS-PAGE.

Formulation

Lyophilized from 0.22 µm filtered solution in Tris with Glycine, Arginine and NaCl, pH7.5 with trehalose as protectant.
Contact us for customized product form or formulation.

Reconstitution

Please see Certificate of Analysis for specific instructions.
For best performance, we strongly recommend you to follow the reconstitution protocol provided in the CoA.

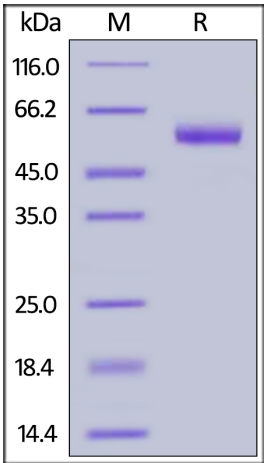
Storage

For long term storage, the product should be stored at lyophilized state at -20°C or lower.
Please avoid repeated freeze-thaw cycles.

This product is stable after storage at:

- 20°C to -70°C for 12 months in lyophilized state;
- 70°C for 3 months under sterile conditions after reconstitution.

SDS-PAGE



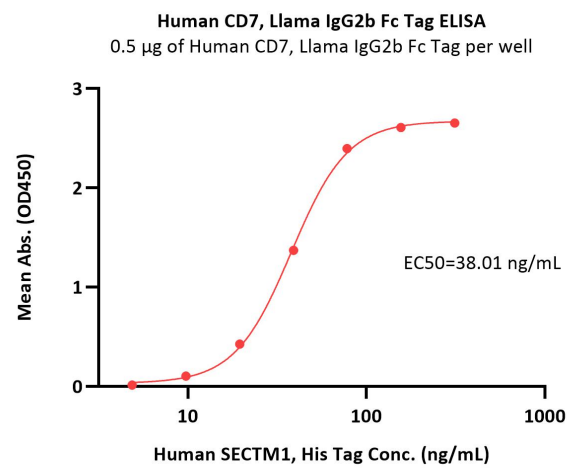
Human CD7 Protein, Llama IgG2b Fc Tag on SDS-PAGE under reducing (R) condition. The gel was stained with Coomassie Blue. The purity of the protein is greater than 95%.

Bioactivity-ELISA



Human CD7 Protein, Llama IgG2b Fc Tag, low endotoxin

Catalog # CD7-H5258



Immobilized Human CD7 Protein, Llama IgG2b Fc Tag (Cat. No. CD7-H5258) at 5 µg/mL (100 µL/well) can bind Human SECTM1, His Tag (Cat. No. SE1-H5227) with a linear range of 10-39 ng/mL (QC tested).

Background

T-cell antigen CD7 (CD7) is also known as GP40, LEU-9, TP41 and Tp40. CD7 is a protein that in humans is encoded by the CD7 gene, this gene encodes a transmembrane protein which is a member of the immunoglobulin superfamily. CD7 has been shown to interact with PIK3R1. This protein is found on thymocytes and mature T cells. It plays an essential role in T-cell interactions and also in T-cell/B-cell interaction during early lymphoid development.

Discounts, Gifts,
and more!

