

Synonym

LILRB5,CD85c,LIR-8

Source

Human LILRB5, His Tag(CDC-H5220) is expressed from human 293 cells (HEK293). It contains AA Gly 24 - Gly 458 (Accession # [NP\\_006831](#)).  
Predicted N-terminus: Gly 24

Molecular Characterization

LILRB5(Gly 24 - Gly 458)  
NP\_006831

Poly-his

This protein carries a polyhistidine tag at the C-terminus.  
The protein has a calculated MW of 49.2 kDa. The protein migrates as 66-68 kDa under reducing (R) condition (SDS-PAGE) due to glycosylation.

Endotoxin

Less than 1.0 EU per µg by the LAL method / rFC method.

Purity

>95% as determined by SDS-PAGE.

Formulation

Lyophilized from 0.22 µm filtered solution in PBS, pH7.4 with trehalose as protectant.  
Contact us for customized product form or formulation.

Reconstitution

Please see Certificate of Analysis for specific instructions.  
*For best performance, we strongly recommend you to follow the reconstitution protocol provided in the CoA.*

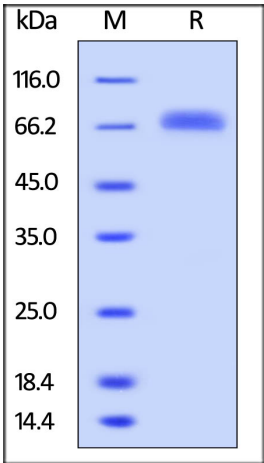
Storage

For long term storage, the product should be stored at lyophilized state at -20°C or lower.  
*Please avoid repeated freeze-thaw cycles.*

This product is stable after storage at:

- 20°C to -70°C for 12 months in lyophilized state;
- 70°C for 3 months under sterile conditions after reconstitution.

SDS-PAGE



Human LILRB5, His Tag on SDS-PAGE under reducing (R) condition. The gel was stained with Coomassie Blue. The purity of the protein is greater than 95%.

Background

Leukocyte immunoglobulin-like receptor subfamily B member 5 (LILRB5), also known as CD85c and LIR-8, belongs to the leukocyte immunoglobulin-like receptor (LIR) family of transmembrane glycoproteins that negatively regulate immune cell activation. Several other LIR subfamily B receptors are expressed on immune cells where they bind to MHC class I molecules on antigen-presenting cells and inhibit stimulation of an immune response.

Discounts, Gifts,  
and more!

