

Synonym

CD300C,CLM-6,CMRF35-A1,CMRF-35,CMRF35A,IGSF16

Source

Human CD300c, His Tag(CDC-H5224) is expressed from human 293 cells (HEK293). It contains AA Gly 21 - Arg 183 (Accession # [AAH22279](#)).
Predicted N-terminus: Gly 21

Molecular Characterization

CD300c(Gly 21 - Arg 183)
AAH22279

Poly-his

This protein carries a polyhistidine tag at the C-terminus.
The protein has a calculated MW of 18.67 kDa. The protein migrates as 26-43 kDa under reducing (R) condition (SDS-PAGE) due to glycosylation.

Endotoxin

Less than 1.0 EU per µg by the LAL method / rFC method.

Purity

>90% as determined by SDS-PAGE.

Formulation

Lyophilized from 0.22 µm filtered solution in PBS, pH7.4 with trehalose as protectant.
Contact us for customized product form or formulation.

Reconstitution

Please see Certificate of Analysis for specific instructions.
For best performance, we strongly recommend you to follow the reconstitution protocol provided in the CoA.

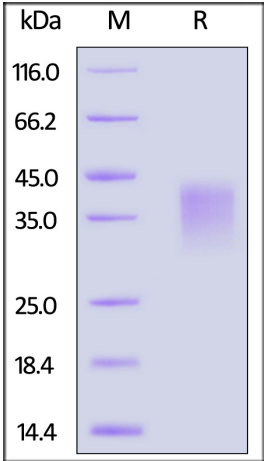
Storage

For long term storage, the product should be stored at lyophilized state at -20°C or lower.
Please avoid repeated freeze-thaw cycles.

This product is stable after storage at:

- 20°C to -70°C for 12 months in lyophilized state;
- 70°C for 3 months under sterile conditions after reconstitution.

SDS-PAGE



Human CD300c, His Tag on SDS-PAGE under reducing (R) condition. The gel was stained with Coomassie Blue. The purity of the protein is greater than 90%.

Background

CMRF35-like molecule 6 (CLM-6) is also known as CD300 antigen-like family member C, CMRF35-A1, Immunoglobulin superfamily member 16 (IgSF16) , CD antigen CD300c, which belongs to the CD300 family. CLM-6 contains one Ig-like V-type (immunoglobulin-like) domain. CD300a/c RNA and surface expression were downregulated after stimulation of plasmacytoid dendritic cells (pDCs) with TLR7 and TLR9 ligands. Exogenous interferon (IFN)-alpha down-regulated



Human CD300c / LMIR2 Protein, His Tag

Catalog # CDC-H5224



CD300a/c expression. CD300a and CD300c play an important role in the cross-regulation of TNF-alpha and IFN-alpha secretion from pDCs. CD300a and CD300c are indistinguishable on the surface of NK cells.

Discounts, Gifts,
and more!

