

Synonym

CD3 epsilon & CD3 gamma,CD3E & CD3G

Source

Mouse CD3E&CD3G Heterodimer Protein,Fc,His Tag&Fc,Flag Tag(CDG-M52W2) is expressed from human 293 cells (HEK293). It contains AA Asp 23 - Asp 108 (CD3E) & Gln 23 - Ser 116 (CD3G) (Accession # [P22646-1](#) (CD3E) & [P11942-1](#) (CD3G)).

Predicted N-terminus: Asp 23 (CD3E) & Gln 23 (CD3G)

Molecular Characterization

CD3E (Asp 23 - Asp 108) P22646-1	Fc(Pro 100 - Lys 330) P01857	Poly-his
CD3G (Gln 23 - Ser 116) P11942-1	Fc(Pro 100 - Lys 330) P01857	Flag

Mouse CD3E&CD3G Heterodimer Protein,Fc,His Tag&Fc,Flag Tag is produced by co-expression of CD3E and CD3G, has a calculated MW of 41.5 kDa (CD3E) and 41.6 kDa (CD3G). Subunit CD3E is fused with a human IgG1 Fc tag at the C-terminus, followed by a polyhistidine tag and subunit CD3G is fused with a human IgG1 Fc tag at the C-terminus, followed by a Flag tag. As a result of glycosylation, the protein migrates as 48-55 kDa under reducing (R) condition, and 100 kDa under non-reducing (NR) condition (SDS-PAGE).

Endotoxin

Less than 1.0 EU per µg by the LAL method / rFC method.

Purity

>95% as determined by SDS-PAGE.

>95% as determined by SEC-MALS.

Formulation

Lyophilized from 0.22 µm filtered solution in PBS, pH7.4 with trehalose as protectant.

Contact us for customized product form or formulation.

Reconstitution

Please see Certificate of Analysis for specific instructions.

*For best performance, we strongly recommend you to follow the reconstitution protocol provided in the CoA.*

Storage

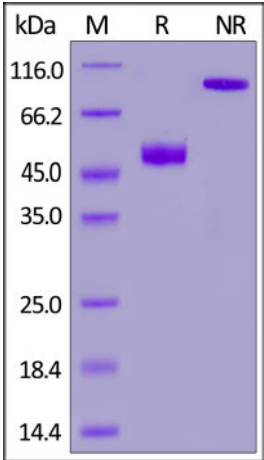
For long term storage, the product should be stored at lyophilized state at -20°C or lower.

*Please avoid repeated freeze-thaw cycles.*

This product is stable after storage at:

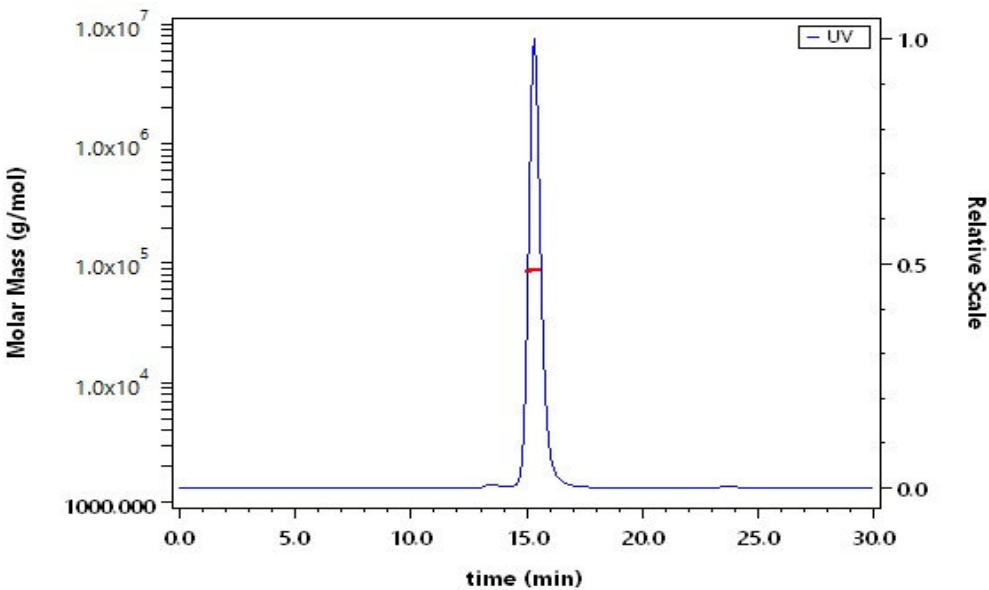
- 20°C to -70°C for 12 months in lyophilized state;
- 70°C for 3 months under sterile conditions after reconstitution.

SDS-PAGE



Mouse CD3E&CD3G Heterodimer Protein,Fc,His Tag&Fc,Flag Tag on SDS-PAGE under reducing (R) and non-reducing (NR) conditions. The gel was stained with Coomassie Blue. The purity of the protein is greater than 95%.

SEC-MALS



The purity of Mouse CD3E&CD3G Heterodimer Protein,Fc,His Tag&Fc,Flag Tag (Cat. No. CDG-M52W2) is more than 95% and the molecular weight of this protein is around 80-95 kDa verified by SEC-MALS.

[Report](#)

Bioactivity-ELISA

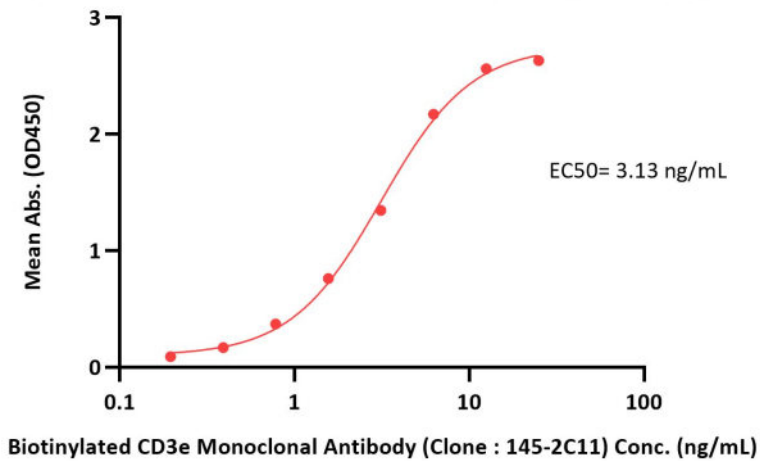


Mouse CD3 epsilon&CD3 gamma Heterodimer Protein, Fc,His Tag&Fc,Flag Tag (MALS verified)

Catalog # CDG-M52W2

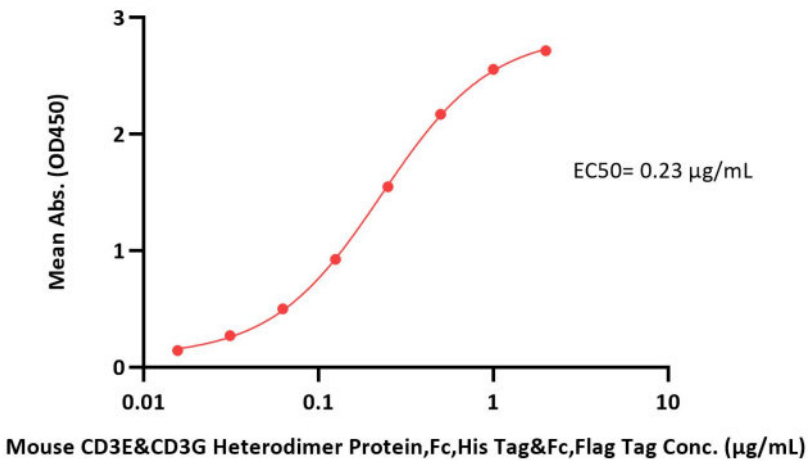


Mouse CD3E&CD3G Heterodimer Protein,Fc,His Tag&Fc,Flag Tag ELISA  
0.1 µg of Mouse CD3E&CD3G Heterodimer Protein,Fc,His Tag&Fc,Flag Tag per well



Immobilized Mouse CD3E&CD3G Heterodimer Protein,Fc,His Tag&Fc,Flag Tag (Cat. No. CDG-M52W2) at 1 µg/mL (100 µL/well) can bind Biotinylated CD3e Monoclonal Antibody (Clone : 145-2C11) with a linear range of 0.2-6 ng/mL (QC tested).

Mouse CD3E&CD3G Heterodimer Protein,Fc,His Tag&Fc,Flag Tag ELISA  
0.1 µg of CD3E Monoclonal Antibody (Clone : 145-2C11) per well



Immobilized CD3E Monoclonal Antibody (Clone : 145-2C11) at 1 µg/mL (100 µL/well) can bind Mouse CD3E&CD3G Heterodimer Protein,Fc,His Tag&Fc,Flag Tag (Cat. No. CDG-M52W2) with a linear range of 0.01-0.25 µg/mL (Routinely tested).

Background

T-cell surface glycoprotein CD3 delta & CD3 gamma chain, also known as CD3D & CD3G or CD3D&CD3G respectively, are single-pass type I membrane proteins. CD3D, together with CD3- epsilon(CD3E) , CD3-gamma and CD3-zeta, and the T-cell receptor alpha/beta and gamma/delta heterodimers, forms the T cell receptor-CD3 complex. T cell receptor-CD3 complex plays an important role in coupling antigen recognition to several intracellular signal-transduction pathways.

