

Synonym

CD3 epsilon & CD3 gamma,CD3E & CD3G

Source

Rabbit CD3E&CD3G Heterodimer Protein, His Tag&Flag Tag(CDG-RB52D5) is expressed from human 293 cells (HEK293). It contains AA Gln 22 - Thr 120 (CD3E) & Gln 23 - Asn 111 (CD3G) (Accession # [Q9TUF9-1](#) (CD3E) & [G1SDA3-1](#) (CD3G)).
Predicted N-terminus: Gln 22 (CD3E) & Gln 23 (CD3G)

Molecular Characterization

CD3E(Gln 22 - Thr 120) Q9TUF9-1	Poly-his
CD3G(Gln 23 - Asn 111) G1SDA3-1	Flag

Rabbit CD3E&CD3G Heterodimer Protein, His Tag&Flag Tag is produced by co-expression of CD3E and CD3G, has a calculated MW of 16.5 kDa (CD3E) and 15.0 kDa (CD3G). Subunit CD3E is fused with a polyhistidine tag at the C-terminus and subunit CD3G is fused with a flag tag at the C-terminus. The reducing (R) heterodimer protein migrates as 18-20 kDa and 23 kDa due to glycosylation.

Endotoxin

Less than 1.0 EU per µg by the LAL method / rFC method.

Purity

>90% as determined by SDS-PAGE.

Formulation

Lyophilized from 0.22 µm filtered solution in PBS, pH7.4 with trehalose as protectant.

Contact us for customized product form or formulation.

Reconstitution

Please see Certificate of Analysis for specific instructions.

For best performance, we strongly recommend you to follow the reconstitution protocol provided in the CoA.

Storage

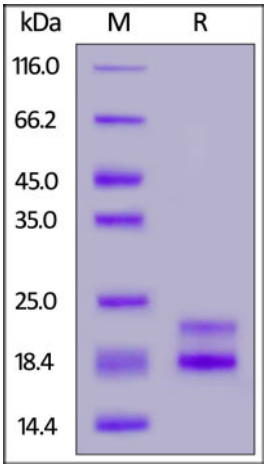
For long term storage, the product should be stored at lyophilized state at -20°C or lower.

Please avoid repeated freeze-thaw cycles.

This product is stable after storage at:

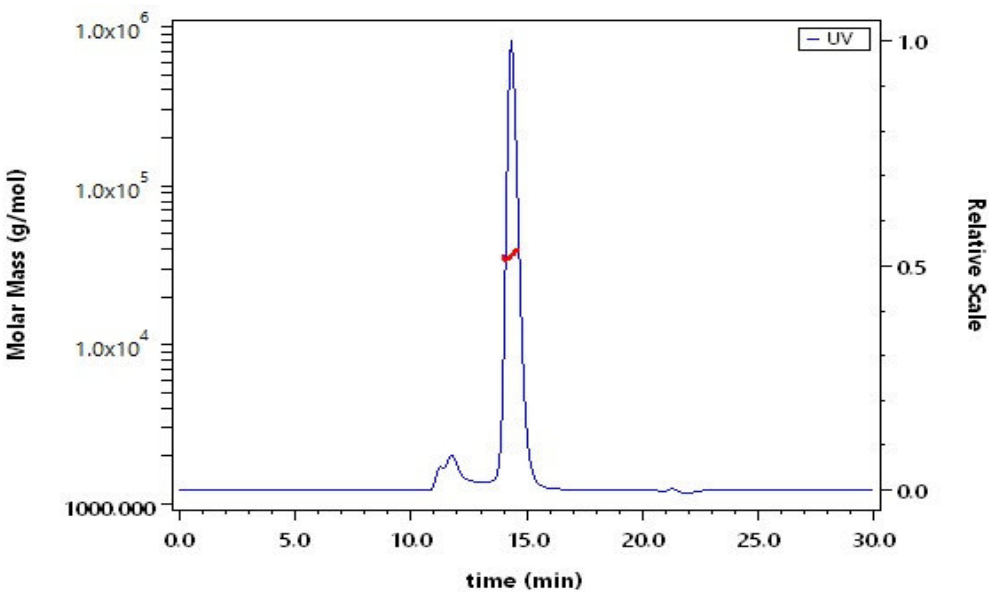
- 20°C to -70°C for 12 months in lyophilized state;
- 70°C for 3 months under sterile conditions after reconstitution.

SDS-PAGE



Rabbit CD3E&CD3G Heterodimer Protein, His Tag&Flag Tag on SDS-PAGE under reducing (R) condition. The gel was stained with Coomassie Blue. The purity of the protein is greater than 90%.

SEC-MALS



The purity of Rabbit CD3E&CD3G Heterodimer Protein, His Tag&Flag Tag (Cat. No. CDG-RB52D5) is more than 85% and the molecular weight of this protein is around 35-45 kDa verified by SEC-MALS.

[Report](#)

Discounts, Gifts,
and more!





Background

T-cell surface glycoprotein CD3 delta & CD3 gamma chain, also known as CD3D & CD3G or CD3D&CD3G respectively, are single-pass type I membrane proteins. CD3D, together with CD3- epsilon(CD3E) , CD3-gamma and CD3-zeta, and the T-cell receptor alpha/beta and gamma/delta heterodimers, forms the T cell receptor-CD3 complex. T cell receptor-CD3 complex plays an important role in coupling antigen recognition to several intracellular signal-transduction pathways.

Discounts, Gifts,
and more!

