

HEK293/Human Integrin alpha V beta 6 Stable Cell Line Data Sheet

➤ *Limited Use & License Disclosure*

BY USE OF THIS PRODUCT, RESEARCHER AGREES TO BE BOUND BY THE FOLLOWING TERMS OF LIMITED USE OF THIS CELL LINE PRODUCT.

- If the researcher is not willing to accept the terms of limited use of this cell line product, and the product is unused, ACRO will accept return of the unused product.
- Researchers may use this product for research use only, no commercial use is allowed.
"Commercial use" means any and all uses of this product and derivatives by a party for profit or other consideration and may include but is not limited to use in: (1) product manufacture; and (2) to provide a service, information or data; and/or resale of the product or its derivatives, whether or not such product or derivatives are resold for use in research.
- This cell line is neither intended for any animal or human therapeutic purposes nor for any direct human in vivo use. You have no right to share, modify, transfer, distribute, sell, sublicense, or otherwise make the cell line available for use to other researchers, laboratories, research institutions, hospitals, universities, or service organizations.
- ACROBIOSYSTEMS MAKES NO WARRANTIES OR REPRESENTATIONS OF ANY KIND, EITHER EXPRESSED OR IMPLIED, WITH RESPECT TO THE SUITABILITY OF THE CELL LINE FOR ANY PARTICULAR USE.
- ACROBIOSYSTEMS ACCEPTS NO LIABILITY IN CONNECTION WITH THE HANDLING OR USE OF THE CELL LINE.
- Modifications of the cell line, transfer to a third party, or commercial use of the cell line may require a separate license and additional fees. Please contact order.cn@acrobiosystems.com for further details.

HEK293/Human Integrin alpha V beta 6 Stable Cell Line Data Sheet

HEK293/Human Integrin alpha V beta 6 Stable Cell Line

Catalog No.	Size
CHEK-ATP125	2 × (1 vial contains ~5×10 ⁶ cells)

• Description

The HEK293/Human Integrin alpha V beta 6 Stable Cell Line was engineered to express the receptors full length human Integrin alpha V (Uniprot: P06756-1) and Integrin beta 6 (Uniprot: P18564-1). Surface expression of human Integrin alpha V beta 6 was confirmed by flow cytometry.

• Application

- Useful for cell-based Integrin alpha V beta 6 binding assay

• Cell Line Profile

Cell line	HEK293/Human Integrin alpha V beta 6 Stable Cell Line
Host Cell	HEK293
Property	Adherent
Complete Growth Medium	DMEM + 10% FBS
Selection Marker	Hygromycin B (20 µg/mL)
Incubation	37°C with 5% CO ₂
Doubling Time	22-24 hours
Transduction Technique	Lentivirus

HEK293/Human Integrin alpha V beta 6 Stable Cell Line Data Sheet

• *Materials Required for Cell Culture*

- DMEM Medium (BasalMedia, Cat. No. L120KJ)

Note: If you are unable to obtain the specified DMEM medium (BasalMedia, Cat. No. L120KJ) in China, you may use an alternative DMEM medium (Gibco, Cat. No. 11965-092) or another suitable medium for culturing.

- Fetal bovine serum (CellMax, Cat. No. SA211.02)
- Hygromycin B (Invitrogen, Cat. No. 10687010)

Note: For selection antibiotics, we highly recommend using the specified brand. The activity of antibiotics may vary between manufacturers, so if you choose to use a different brand, it is essential to validate whether the concentration recommended in the culture medium is suitable. Regardless of the brand used, we recommend maintaining a backup culture without selection antibiotics to avoid potential cell loss due to inappropriate antibiotic concentration

- 0.25% Trypsin-EDTA (1X), Phenol Red (Gibco, Cat. No. 25200-056)
- Penicillin-Streptomycin (Gibco, Cat. No. 15140-122)
- Phosphate Buffered Saline (1X) (HyClone, Cat. No. SH30256.01)
- Complete Growth Medium: DMEM + 10% FBS, 1%P/S
- Culture Medium: DMEM + 10% FBS, Hygromycin B (20 µg/mL), 1%P/S
- Freeze Medium: 90% FBS, 10% (V/V) DMSO
- T-75 Culture flask (Corning, Cat. No. 430641)
- Cryogenic storage vials (SARSTEDT, Cat. No. 72.379.007)
- Thermostat water bath
- Centrifuge (Cence, Model: L550)
- Cell counter (MONWEI, Model: SmartCell200A Plus)
- CO₂ Incubator (Thermo, Model: 3111)
- Biological Safety Cabinet (Thermo, Model: 1389)

HEK293/Human Integrin alpha V beta 6 Stable Cell Line Data Sheet

• *Recovery*

1. Thaw the vial by gently agitating it in a 37°C water bath. To minimize the risk of contamination, ensure the cap remains out of the water. Thawing should be completed quickly, typically within 3-5 minutes.
2. After thawing, promptly remove the vial from the water bath and decontaminate it by spraying with 70% ethanol. From this point onward, all operations must be performed under strict aseptic conditions.
3. Transfer the contents of the vial to a centrifuge tube containing 4.0 mL of complete growth medium. Centrifuge at approximately 1000 rpm for 5 minutes.
4. Resuspend the cell pellet with 5 mL **complete growth medium** and transfer the cell suspension into a T-75 flask containing 10-15 mL of pre-warmed **complete growth medium**.
5. Incubate at 37°C with 5% CO₂ incubator until the cells are ready to be split.

• *Subculture*

1. Cell viability may be low after thawing, and full recovery may take up to a week. Monitor the cells daily until the culture reaches 80-90% confluency. At this point, remove and discard the spent medium. Avoid allowing the cells to become over-confluent to ensure optimal cell health.
2. Wash the cells once with sterile PBS. Avoid adding PBS directly onto the cell surface.
3. Add 2 mL of 0.25% Trypsin-EDTA to the T-75 flask. Place the flask at 37°C for 2-3 minutes, until 90% of the cells have detached. Monitor under a microscope to avoid over-trypsinization.
4. Add 6.0 to 8.0 mL of **culture medium** using a pipette and gently rinse the cells from the surface of the T-75 flask. Gently pipette up and down several times to achieve a single cell suspension without cell clumps.
5. Transfer appropriate aliquots of the cell suspension to a new T-75 flask. A subcultivation ratio of 1:4 to 1:8 is recommended. Adjust the ratio based on your specific culture system.
6. Incubate at 37°C with 5% CO₂ incubator.
7. When the cell culture reaches 80-90% confluency, proceed to the next subculture. Avoid over-confluency, as this may negatively impact cell performance in subsequent passages.

Note: After recovery, maintain the cells for 1-2 passages in the complete growth medium not containing the selection marker, if the cells are in good condition, transition to the culture medium containing the selection marker during subculturing.

HEK293/Human Integrin alpha V beta 6 Stable Cell Line Data Sheet

• *Cryopreservation*

1. When the cell culture reaches 80-90% confluency, remove and discard the spent medium.
2. Wash the cells once with sterile PBS. Avoid adding PBS directly onto the cell surface.
3. Add 2 mL of 0.25% Trypsin-EDTA to the T-75 flask. Place the flask at 37°C for 2-3 minutes, until 90% of the cells have detached. Monitor under a microscope to avoid over-trypsinization.
4. Add 6.0 to 8.0 mL of complete growth medium using a pipette and gently rinse the cells from the surface of the T-75 flask. Gently pipette up and down several times to achieve a single cell suspension without cell clumps. Count the viable cells.
5. Transfer the cell suspension to a centrifuge tube. Centrifuge at 1000 rpm for 5 min at room temperature to pellet the cells.
6. After centrifugation, discard the supernatant. Resuspend the cells in ice cold freezing medium to a concentration of 5×10^6 to 1×10^7 cells/mL.
7. Aliquot the cell suspension into cryogenic storage vials. Place the vials in a programmable cooler or an insulated box placed in a -80°C freezer overnight, then transfer to liquid nitrogen storage for long-term storage.

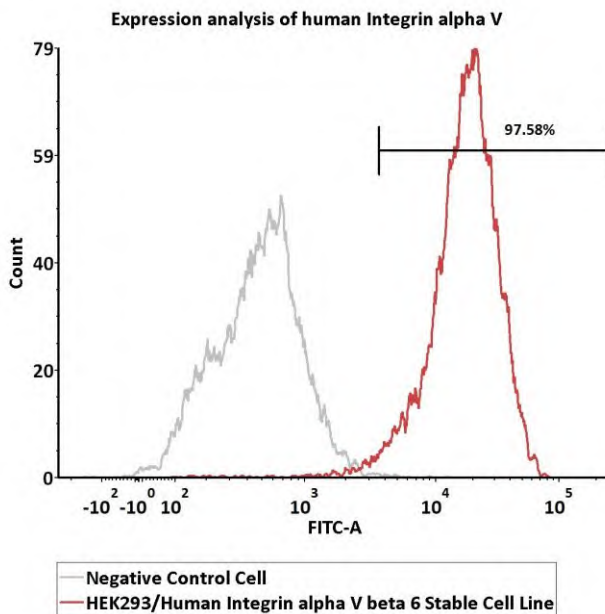
Note: It is recommended to establish a cell bank at the earliest possible passage for long-term use.

• *Storage Condition*

Cells must be received in a frozen state on dry ice and should be transferred to liquid nitrogen or a -80°C freezer immediately upon receipt. If stored in a -80°C freezer, it is recommended to limit the storage period to no more than two weeks. For long-term preservation, transfer the cells to liquid nitrogen is highly recommended.

HEK293/Human Integrin alpha V beta 6 Stable Cell Line Data Sheet

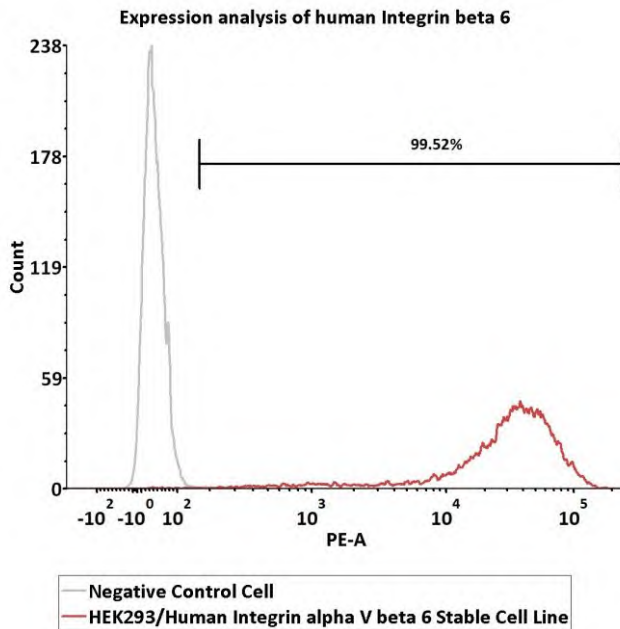
• Receptor Assay



Catalog No.	Stable Cell Line	MFI for Integrin alpha V (FITC)
NA	Negative Control Cell	479.02
CHEK-ATP125	HEK293/Human Integrin alpha V beta 6 Stable Cell Line	17416.24

Fig1. Expression analysis of human Integrin alpha V on HEK293/Human Integrin alpha V beta 6 Stable Cell Line by FACS. Cell surface staining was performed on HEK293/Human Integrin alpha V beta 6 Stable Cell Line or negative control cell using anti-human Integrin alpha V antibody followed by staining with FITC anti-mouse IgG Antibody.

HEK293/Human Integrin alpha V beta 6 Stable Cell Line Data Sheet

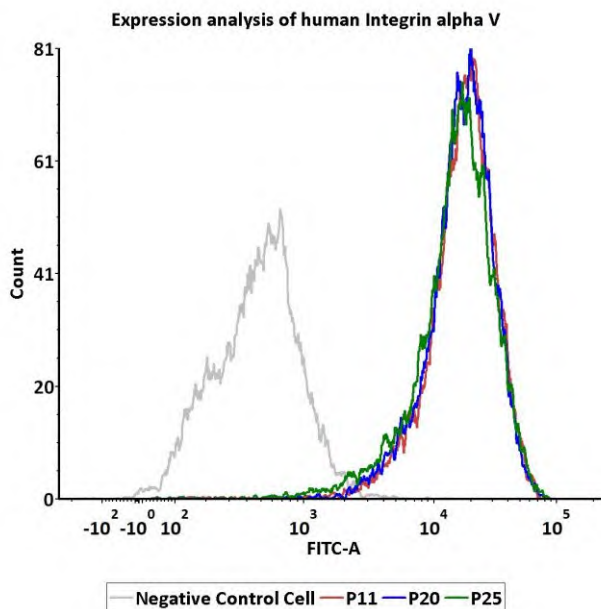


Catalog No.	Stable Cell Line	MFI for Integrin beta 6 (PE)
NA	Negative Control Cell	34.59
CHEK-ATP125	HEK293/Human Integrin alpha V beta 6 Stable Cell Line	33004.63

Fig2. Expression analysis of human Integrin beta 6 on HEK293/Human Integrin alpha V beta 6 Stable Cell Line by FACS. Cell surface staining was performed on HEK293/Human Integrin alpha V beta 6 Stable Cell Line or negative control cell using anti-human Integrin beta 6 antibody followed by staining with PE anti-human IgG Fc Antibody.

HEK293/Human Integrin alpha V beta 6 Stable Cell Line Data Sheet

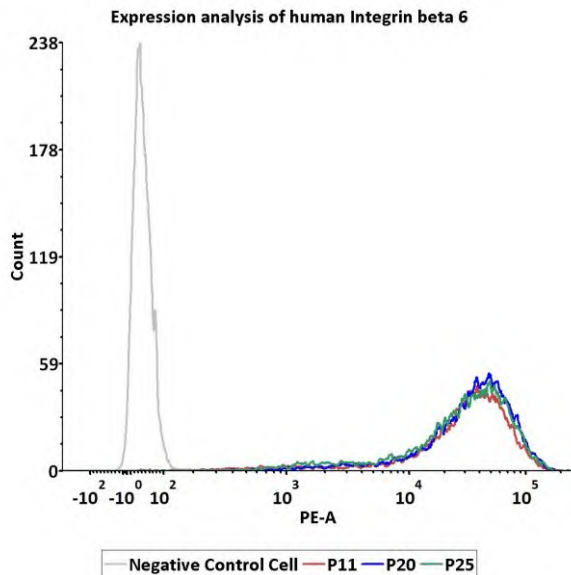
• Passage Stability



Passage	MFI for Integrin alpha V (FITC)
P11	17416.24
P20	16948.70
P25	15699.30

Fig3. Passage stability analysis of human Integrin alpha V expression by FACS. Flow cytometry surface staining of human Integrin alpha V on HEK293/Human Integrin alpha V beta 6 Stable Cell Line demonstrates consistent mean fluorescent intensity across passage 11-25.

HEK293/Human Integrin alpha V beta 6 Stable Cell Line Data Sheet



Passage	MFI for Integrin beta 6 (PE)
P11	33004.63
P20	36453.36
P25	32564.89

Fig4. Passage stability analysis of human Integrin beta 6 expression by FACS. Flow cytometry surface staining of human Integrin beta 6 on HEK293/Human Integrin alpha V beta 6 Stable Cell Line demonstrates consistent mean fluorescent intensity across passage 11-25.

HEK293/Human Integrin alpha V beta 6 Stable Cell Line Data Sheet

• *Related Products*

<u>Products</u>	<u>Cat.No.</u>
HEK293/hClaudin-18.2 Cell Line	CHEK-ATP033
HEK293/hGPRC5D Cell Line	CHEK-STP042
HEK293/Human TROP-2 Stable Cell Line	CHEK-ATP036
HEK293/Human Nectin-4 Stable Cell Line	CHEK-ATP035
HEK293/Human Anti-CD19 Stable Cell Line	CHEK-ATS056
CHO/Human GPRC5D Stable Cell Line	CCHO-STP078
HEK293/Human CEACAM5 Stable Cell Line	CHEK-ATP083
HEK293/Human ROR1 Stable Cell Line	CHEK-ATP084
HEK293/hClaudin-18.2 Cell Line	CHEK-ATP033
HEK293/hGPRC5D Cell Line	CHEK-STP042
HEK293/Human TROP-2 Stable Cell Line	CHEK-ATP036
HEK293/Human Nectin-4 Stable Cell Line	CHEK-ATP035
HEK293/Human Anti-CD19 Stable Cell Line	CHEK-ATS056
CHO/Human GPRC5D Stable Cell Line	CCHO-STP078
HEK293/Human CEACAM5 Stable Cell Line	CHEK-ATP083
HEK293/Human ROR1 Stable Cell Line	CHEK-ATP084
HEK293/hClaudin-18.2 Cell Line	CHEK-ATP033
HEK293/hGPRC5D Cell Line	CHEK-STP042
HEK293/Human TROP-2 Stable Cell Line	CHEK-ATP036
HEK293/Human Nectin-4 Stable Cell Line	CHEK-ATP035
HEK293/Human Anti-CD19 Stable Cell Line	CHEK-ATS056
CHO/Human GPRC5D Stable Cell Line	CCHO-STP078
HEK293/Human CEACAM5 Stable Cell Line	CHEK-ATP083
HEK293/Human ROR1 Stable Cell Line	CHEK-ATP084
HEK293/Human Transferrin R Stable Cell Line	CHEK-ATP089
HEK293/Human DLL3 Stable Cell Line	CHEK-ATP090
HEK293/Human FOLR1 Stable Cell Line	CHEK-ATP091
HEK293/Human Glypican-3 (GPC3) Stable Cell Line	CHEK-ATP092

HEK293/Human Integrin alpha V beta 6 Stable Cell Line Data Sheet

• *Related Products*

<u>Products</u>	<u>Cat.No.</u>
CHO/Human DLL3 Stable Cell Line	SCCHO-ATP111
CHO/Human Glypican-3 (GPC3) Stable Cell Line	SCCHO-ATP112
HEK293/Human Transferrin Stable Cell Line	CHEK-ATP115
HEK293/Human NAPI-IIb Stable Cell Line	CHEK-ATP116
HEK293/Human Mesothelin Stable Cell Line	CHEK-ATP119
CHO/Human Mesothelin Stable Cell Line	SCCHO-ATP120
CHO/Human STEAP1 Stable Cell Line	SCCHO-ATP121
HEK293/Human ENPP3 Stable Cell Line	CHEK-ATP122
HEK293/Human LRRC15 Stable Cell Line	CHEK-ATP123
HEK293/Human Claudin-1 Stable Cell Line	CHEK-ATP124
HEK293/Human B7-H4 Stable Cell Line	CHEK-ATP126
HEK293/Human Cadherin-6 Stable Cell Line	CHEK-ATP127
HEK293/Human LY6G6D Stable Cell Line	CHEK-ATP137
HEK293/Human Claudin-6 Stable Cell Line	CHEK-ATP138
HEK293/Human Claudin-9 Stable Cell Line	CHEK-ATP139
CHO/Human c-MET Stable Cell Line	SCCHO-ATP141
HEK293/Human c-MET Stable Cell Line	CHEK-ATP146
HEK293/Human EGF R Stable Cell Line	CHEK-ATP148
HEK293/Human ErbB3 Stable Cell Line	CHEK-ATP149
HEK293/Human ErbB2 Stable Cell Line	CHEK-ATP150
HEK293/Human uPAR Stable Cell Line	CHEK-ATP151
CHO/Human uPAR Stable Cell Line	SCCHO-ATP152
HEK293/Human CD19 Stable Cell Line	CHEK-ATP003
HEK293/Human STEAP1 Stable Cell Line	CHEK-ATP154
CHO/Human B7-H3 (4Ig) Stable Cell Line	SCCHO-ATP169
CHO/Human CD79A&CD79B Stable Cell Line	SCCHO-ATP170
CHO/Human CD79B Stable Cell Line	SCCHO-ATP171

HEK293/Human Integrin alpha V beta 6 Stable Cell Line Data Sheet

• *Related Products*

<u>Products</u>	<u>Cat.No.</u>
HEK293/Human Cadherin-17 Stable Cell Line	CHEK-ATP173
HEK293/Human EpCAM Stable Cell Line	CHEK-ATP175
HEK293/Human TPBG Stable Cell Line	CHEK-ATP176
CHO/Cynomolgus Glypican-3 (GPC3) Stable Cell Line	SCCHO-ATP179
HEK293/Human GUCY2C Stable Cell Line	CHEK-ATP182
HEK293/Human SEZ6 Stable Cell Line	CHEK-ATP183
HEK293/Human FAP Stable Cell Line	CHEK-ATP184
HEK293/Human PSMA Stable Cell Line	CHEK-ATP185
HEK293/Human PTK7 Stable Cell Line	CHEK-ATP186
HEK293/Human MCAM Stable Cell Line	CHEK-ATP195
HEK293/Human GPC3 Δ HS Stable Cell Line	CHEK-ATP212
HEK293/Human c-MET&ErbB3 Stable Cell Line	CHEK-ATP217
HEK293/Human BCMA Stable Cell Line	CHEK-ATP218