

## HEK293/Human TL1A Stable Cell Line Data Sheet

### ➤ *Limited Use & License Disclosure*

**BY USE OF THIS PRODUCT, RESEARCHER AGREES TO BE BOUND BY THE FOLLOWING TERMS OF LIMITED USE OF THIS CELL LINE PRODUCT.**

- If the researcher is not willing to accept the terms of limited use of this cell line product, and the product is unused, ACRO will accept return of the unused product.
- Researchers may use this product for research use only, no commercial use is allowed.  
"Commercial use" means any and all uses of this product and derivatives by a party for profit or other consideration and may include but is not limited to use in: (1) product manufacture; and (2) to provide a service, information or data; and/or resale of the product or its derivatives, whether or not such product or derivatives are resold for use in research.
- This cell line is neither intended for any animal or human therapeutic purposes nor for any direct human in vivo use. You have no right to share, modify, transfer, distribute, sell, sublicense, or otherwise make the cell line available for use to other researchers, laboratories, research institutions, hospitals, universities, or service organizations.
- ACROBIOSYSTEMS MAKES NO WARRANTIES OR REPRESENTATIONS OF ANY KIND, EITHER EXPRESSED OR IMPLIED, WITH RESPECT TO THE SUITABILITY OF THE CELL LINE FOR ANY PARTICULAR USE.
- ACROBIOSYSTEMS ACCEPTS NO LIABILITY IN CONNECTION WITH THE HANDLING OR USE OF THE CELL LINE.
- Modifications of the cell line, transfer to a third party, or commercial use of the cell line may require a separate license and additional fees. Please contact [order.cn@acrobiosystems.com](mailto:order.cn@acrobiosystems.com) for further details.

# HEK293/Human TL1A Stable Cell Line Data Sheet

## HEK293/Human TL1A Stable Cell Line

Catalog No.	Size
CHEK-ATP142	2 × (1 vial contains ~5×10 <sup>6</sup> cells)

### • *Description*

The HEK293/Human TL1A Stable Cell Line was engineered to express the full length human TL1A (Uniprot: O95150-1). Surface expression of human TL1A was confirmed by flow cytometry.

### • *Application*

- Useful for cell-based TL1A binding assay

### • *Cell Line Profile*

Cell line	HEK293/Human TL1A Stable Cell Line
Host Cell	HEK293
Property	Adherent
Complete Growth Medium	DMEM + 10% FBS
Selection Marker	Puromycin (2 µg/mL)
Incubation	37°C with 5% CO <sub>2</sub>
Doubling Time	22-24 hours
Transduction Technique	Lentivirus

# HEK293/Human TL1A Stable Cell Line Data Sheet

## • *Materials Required for Cell Culture*

- DMEM Medium (BasalMedia, Cat. No. L120KJ)

**Note:** If you are unable to obtain the specified DMEM medium (BasalMedia, Cat. No. L120KJ) in China, you may use an alternative DMEM medium (Gibco, Cat. No. 11965-092) or another suitable medium for culturing.

- Fetal bovine serum (CellMax, Cat. No. SA211.02)
- Puromycin (InvivoGen, Cat. No. ant-pr-5b)

**Note:** For selection antibiotics, we highly recommend using the specified brand. The activity of antibiotics may vary between manufacturers, so if you choose to use a different brand, it is essential to validate whether the concentration recommended in the culture medium is suitable. Regardless of the brand used, we recommend maintaining a backup culture without selection antibiotics to avoid potential cell loss due to inappropriate antibiotic concentration.

- 0.25% Trypsin-EDTA (1X), Phenol Red (Gibco, Cat. No. 25200-056)
- Penicillin-Streptomycin (Gibco, Cat. No. 15140-122)
- Phosphate Buffered Saline (1X) (HyClone, Cat. No. SH30256.01)
- Complete Growth Medium: DMEM + 10% FBS, 1%P/S
- Culture Medium: DMEM + 10% FBS, Puromycin (2 µg/mL), 1%P/S
- Freeze Medium: 90% FBS, 10% (V/V) DMSO
- T-75 Culture flask (Corning, Cat. No. 430641)
- Cryogenic storage vials (SARSTEDT, Cat. No. 72.379.007)
- Thermostat water bath
- Centrifuge (Cence, Model: L550)
- Cell counter (MONWEI, Model: SmartCell200A Plus)
- CO<sub>2</sub> Incubator (Thermo, Model: 3111)
- Biological Safety Cabinet (Thermo, Model: 1389)

## HEK293/Human TL1A Stable Cell Line Data Sheet

### • *Recovery*

1. Thaw the vial by gently agitating it in a 37°C water bath. To minimize the risk of contamination, ensure the cap remains out of the water. Thawing should be completed quickly, typically within 3-5 minutes.
2. After thawing, promptly remove the vial from the water bath and decontaminate it by spraying with 70% ethanol. From this point onward, all operations must be performed under strict aseptic conditions.
3. Transfer the contents of the vial to a centrifuge tube containing 4.0 mL of complete growth medium. Centrifuge at approximately 1000 rpm for 5 minutes.
4. Resuspend the cell pellet with 5 mL **complete growth medium** and transfer the cell suspension into a T-75 flask containing 10-15 mL of pre-warmed **complete growth medium**.
5. Incubate at 37°C with 5% CO<sub>2</sub> incubator until the cells are ready to be split.

### • *Subculture*

1. Cell viability may be low after thawing, and full recovery may take up to a week. Monitor the cells daily until the culture reaches 80-90% confluency. At this point, remove and discard the spent medium. Avoid allowing the cells to become over-confluent to ensure optimal cell health.
2. Wash the cells once with sterile PBS. Avoid adding PBS directly onto the cell surface.
3. Add 2 mL of 0.25% Trypsin-EDTA to the T-75 flask. Place the flask at 37°C for 2-3 minutes, until 90% of the cells have detached. Monitor under a microscope to avoid over-trypsinization.
4. Add 6.0 to 8.0 mL of **culture medium** using a pipette and gently rinse the cells from the surface of the T-75 flask. Gently pipette up and down several times to achieve a single cell suspension without cell clumps.
5. Transfer appropriate aliquots of the cell suspension to a new T-75 flask. A subcultivation ratio of 1:4 to 1:8 is recommended. Adjust the ratio based on your specific culture system.
6. Incubate at 37°C with 5% CO<sub>2</sub> incubator.
7. When the cell culture reaches 80-90% confluency, proceed to the next subculture. Avoid over-confluency, as this may negatively impact cell performance in subsequent passages.

**Note:** After recovery, maintain the cells for 1-2 passages in the complete growth medium not containing the selection marker, if the cells are in good condition, transition to the culture medium containing the selection marker during subculturing.

# HEK293/Human TL1A Stable Cell Line Data Sheet

## • *Cryopreservation*

1. When the cell culture reaches 80-90% confluency, remove and discard the spent medium.
2. Wash the cells once with sterile PBS. Avoid adding PBS directly onto the cell surface.
3. Add 2 mL of 0.25% Trypsin-EDTA to the T-75 flask. Place the flask at 37°C for 2-3 minutes, until 90% of the cells have detached. Monitor under a microscope to avoid over-trypsinization.
4. Add 6.0 to 8.0 mL of complete growth medium using a pipette and gently rinse the cells from the surface of the T-75 flask. Gently pipette up and down several times to achieve a single cell suspension without cell clumps. Count the viable cells.
5. Transfer the cell suspension to a centrifuge tube. Centrifuge at 1000 rpm for 5 min at room temperature to pellet the cells.
6. After centrifugation, discard the supernatant. Resuspend the cells in ice cold freezing medium to a concentration of  $5 \times 10^6$  to  $1 \times 10^7$  cells/mL.
7. Aliquot the cell suspension into cryogenic storage vials. Place the vials in a programmable cooler or an insulated box placed in a –80°C freezer overnight, then transfer to liquid nitrogen storage for long-term storage.

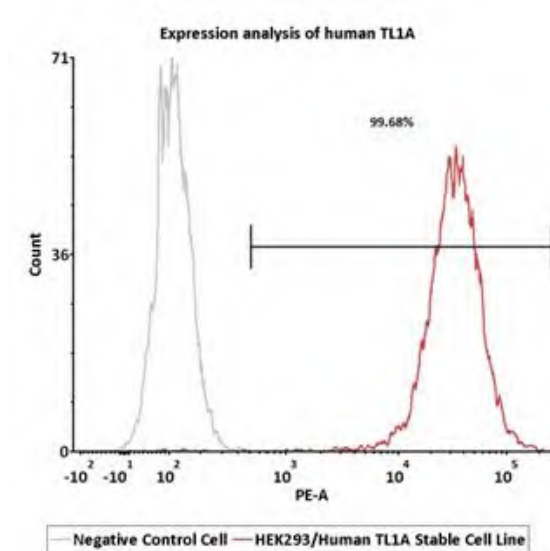
**Note:** It is recommended to establish a cell bank at the earliest possible passage for long-term use.

## • *Storage Condition*

Cells must be received in a frozen state on dry ice and should be transferred to liquid nitrogen or a –80°C freezer immediately upon receipt. If stored in a –80°C freezer, it is recommended to limit the storage period to no more than two weeks. For long-term preservation, transfer the cells to liquid nitrogen is highly recommended.

# HEK293/Human TL1A Stable Cell Line Data Sheet

## • Receptor Assay

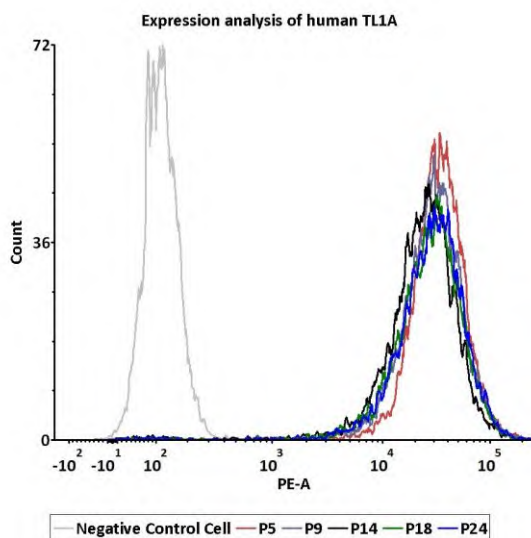


Catalog No.	Stable Cell Line	MFI for TL1A (PE)
NA	Negative Control Cell	107.32
CHEK-ATP142	HEK293/Human TL1A Stable Cell Line	32330.35

**Fig1. Expression analysis of human TL1A on HEK293/Human TL1A Stable Cell Line by FACS.** Cell surface staining was performed on HEK293/Human TL1A Stable Cell Line or negative control cell using anti-human TL1A Antibody followed by staining with PE anti-human IgG Fc Antibody.

# HEK293/Human TL1A Stable Cell Line Data Sheet

## • Passage Stability



Passage	MFI for TL1A (PE)
P5	32330.35
P9	28694.32
P14	23940.81
P18	27474.68
P24	28495.01

**Fig2. Passage stability analysis of human TL1A expression by FACS.** Flow cytometry surface staining of human TL1A on HEK293/Human TL1A Stable Cell Line demonstrates consistent mean fluorescent intensity across passage 5-24.

# HEK293/Human TL1A Stable Cell Line Data Sheet

## • *Related Products*

<u>Products</u>	<u>Cat. No.</u>
Human IL-31 RA/OSMR (Luc) HEK293 Reporter Cell	CHEK-ATF094
Human IL-10 R alpha/IL-10 R beta (Luc) HEK293 Reporter Cell	CHEK-ATF095
Human CD40 (Luc) HEK293 Reporter Cell	CHEK-ATF097
Human IL-7 R alpha/CD132 (Luc) HEK293 Reporter Cell	CHEK-ATF099
NIH-3T3/Human IGF-1 R Stable Cell Line	CNIH-ATP102
Human HVEM (Luc) HEK293 Reporter Cell	CHEK-ATF105
Human BTLA (Luc) Jurkat Reporter Cell	SCJUR-STF106
Human IGF-1 R (Luc) HEK293 Reporter Cell	CHEK-ATF107
Raji/Human HVEM Stable Cell Line	SCRAJ-STF108
CHO/Human LIGHT Stable Cell Line	SCCHO-ATP109
CHO/Human BTLA Stable Cell Line	SCCHO-ATP110
CHO/Human TSHR Stable Cell Line	SCCHO-ATP085
CHO/Human LILRB4 Stable Cell Line	SCCHO-ATP087
Human GLP-2R (Luc) HEK293 Reporter Cell	CHEK-ATF128
Human RANK (Luc) HEK293 Reporter Cell	CHEK-ATF129
HEK293/FcRn (FCGRT & B2M), GFP Tag Stable Cell Line	CHEK-ATP132
HEK293/Human TSHR Stable Cell Line	CHEK-ATP086
HEK293/Human LILRB4 Stable Cell Line	CHEK-ATP088
Human IL-17 RA/IL-17 RC (Luc) HEK293 Reporter Cell	CHEK-ATF133
Human OX40 (Luc) HEK293 Reporter Cell	CHEK-ATF135
Human IL-2 R beta/IL-2 R gamma (Luc) HEK293 Reporter Cell	CHEK-ATF136
HEK293/Human HVEM Stable Cell Line	CHEK-ATP147
Human IL-23 R/IL-12 R beta 1(Luc) HEK293 Reporter Cell	CHEK-ATF166
Human IL-22 R alpha 1/IL-10 R beta (Luc) HEK293 Reporter Cell	CHEK-ATF167
Human DR3 (TL1A receptor) (Luc) Jurkat Reporter Cell	SCJUR-STF178
Human TSHR (Luc) HEK293 Reporter Cell	CHEK-ATF187
Human PTH1R (Luc) HEK293 Reporter Cell	CHEK-ATF194
HEK293/Membrane-Bound human TL1A Stable Cell Line	CHEK-ATP198
Human TACI (Luc) HEK293 Reporter Cell	CHEK-ATF197



## HEK293/Human TL1A Stable Cell Line Data Sheet

### • *Related Products*

<u>Products</u>	<u>Cat. No.</u>
Raji/Membrane-Bound Human TL1A Stable Cell Line	SCRAJ-STT204