

Human Claudin-3 Full Length Protein (VLP)

Catalog # CL3-H52P3



Synonym

C7orf1, CPE-R2, CPETR2, HRVP1, RVP1

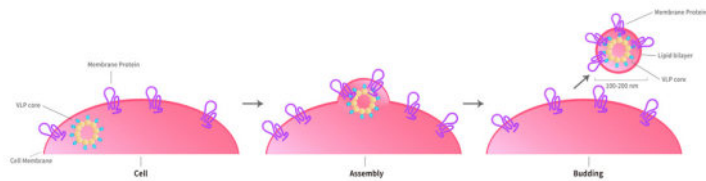
Source

Human Claudin-3 Full Length Protein (VLP)(CL3-H52P3) is expressed from human 293 cells (HEK293). It contains AA Met 1 - Val 220 (Accession # [O15551](#)).

Predicted N-terminus: Met 1

Molecular Characterization

Virus-like particles(VLPs) are formed by self-assembly of capsid proteins from viruses. Membrane Proteins can be constituted in-situ with VLPs produced from HEK293 cell cultures. These VLPs concentrate conformationally intact membrane proteins directly on the cell surface and produce soluble, high-concentration proteins perfect for immunization and antibody screening.



The VLPs provide the display of properly folded membrane proteins in their native cellular membrane in a compact size of 100~300 nm diameter (similar to the size of most viruses) making it optimal targets for dendritic cells in vivo and surface attachment for phage display.

Endotoxin

Less than 1.0 EU per µg by the LAL method / rFC method.

\*The isotype control of empty/mock VLP (Cat. No. [VLP-N5213](#)) is sold separately and not included in protein, you can follow [this link](#) for product information.

Purity

>95% as determined by SEC-HPLC.

Formulation

*The VLPs are highly immunogenic, so the immunization strategy should be optimized (antigen dose, regimen and adjuvant).*

Supplied as 0.2 µm filtered solution in PBS, Arginine, pH7.4 with trehalose as protectant.

Contact us for customized product form or formulation.

Shipping

*This product is supplied and shipped with dry ice, please inquire the shipping cost.*

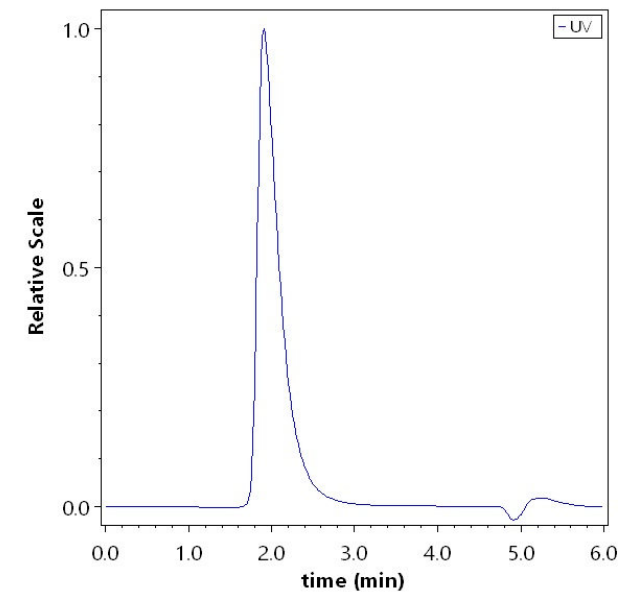
Storage

*Please avoid repeated freeze-thaw cycles.*

This product is stable after storage at:

- The product MUST be stored at -70°C or lower upon receipt;
- -70°C for 12 months under sterile conditions.

SEC-HPLC



The purity of Human Claudin-3 Full Length Protein (VLP) (Cat. No. CL3-H52P3) was greater than 95% as determined by SEC-HPLC.

Discounts, Gifts,  
and more!

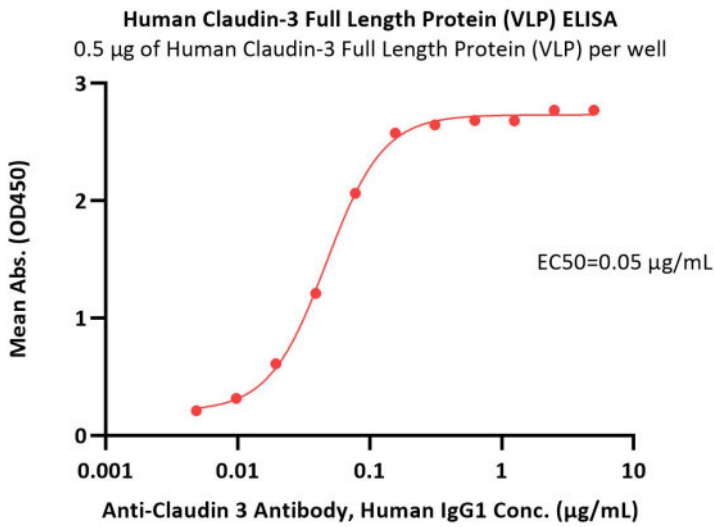


# Human Claudin-3 Full Length Protein (VLP)

Catalog # CL3-H52P3



## Bioactivity-ELISA



Immobilized Human Claudin-3 Full Length Protein (VLP) (Cat. No. CL3-H52P3) at 5 µg/mL (100 µL/well) can bind Anti-Claudin 3 Antibody, Human IgG1 with a linear range of 0.005-0.078 µg/mL (QC tested).

## Background

Tight junctions represent one mode of cell-to-cell adhesion in epithelial or endothelial cell sheets, forming continuous seals around cells and serving as a physical barrier to prevent solutes and water from passing freely through the paracellular space. These junctions are comprised of sets of continuous networking strands in the outwardly facing cytoplasmic leaflet, with complementary grooves in the inwardly facing extracytoplasmic leaflet. The protein encoded by this intronless gene, a member of the claudin family, is an integral membrane protein and a component of tight junction strands. It is also a low-affinity receptor for Clostridium perfringens enterotoxin, and shares aa sequence similarity with a putative apoptosis-related protein found in rat.

