

Synonym

BGR, CANDF4, CD369, CLECSF12, DECTIN1, SCARE2

Source

Human CLEC7A Protein, His Tag(CL7-H5248) is expressed from human 293 cells (HEK293). It contains AA Thr 66 - Met 201 (Accession # [NP_072092](#)).

Molecular Characterization

Poly-his

CLEC7A(Thr 66 - Met 201)
NP_072092

This protein carries a polyhistidine tag at the N-terminus.

The protein has a calculated MW of 17.5 kDa. The protein migrates as 15-17 kDa when calibrated against [Star Ribbon Pre-stained Protein Marker](#) under reducing (R) condition (SDS-PAGE).

Endotoxin

Less than 1.0 EU per µg by the LAL method / rFC method.

Purity

>90% as determined by SDS-PAGE.

Formulation

Lyophilized from 0.22 µm filtered solution in PBS, pH7.4 with trehalose as protectant.

Contact us for customized product form or formulation.

Reconstitution

Please see Certificate of Analysis for specific instructions.

For best performance, we strongly recommend you to follow the reconstitution protocol provided in the CoA.

Storage

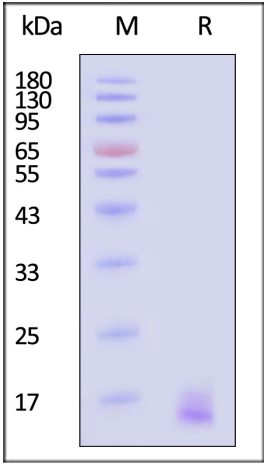
For long term storage, the product should be stored at lyophilized state at -20°C or lower.

Please avoid repeated freeze-thaw cycles.

This product is stable after storage at:

- 20°C to -70°C for 12 months in lyophilized state;
- 70°C for 3 months under sterile conditions after reconstitution.

SDS-PAGE



Human CLEC7A Protein, His Tag on SDS-PAGE under reducing (R) condition. The gel was stained with Coomassie Blue. The purity of the protein is greater than 90% (With [Star Ribbon Pre-stained Protein Marker](#)).

Background

Lectin that functions as pattern recognizing receptor (PRR) specific for beta-1,3-linked and beta-1,6-linked glucans, which constitute cell wall constituents from pathogenic bacteria and fungi (PubMed:11567029, PubMed:12423684).

Necessary for the TLR2-mediated inflammatory response and activation of NF-kappa-B: upon beta-glucan binding, recruits SYK via its ITAM motif and promotes a signaling cascade that activates some CARD domain-BCL10-MALT1 (CBM) signalosomes, leading to the activation of NF-kappa-B and MAP kinase p38

Discounts, Gifts,
and more!



Human CLEC7A Protein, His Tag

Catalog # CL7-H5248



(MAPK11, MAPK12, MAPK13 and/or MAPK14) pathways which stimulate expression of genes encoding pro-inflammatory cytokines and chemokines (By similarity).

Enhances cytokine production in macrophages and dendritic cells (By similarity).

Mediates production of reactive oxygen species in the cell (By similarity).

Mediates phagocytosis of C.albicans conidia (PubMed:17230442).

Binds T-cells in a way that does not involve their surface glycans and plays a role in T-cell activation. Stimulates T-cell proliferation. Induces phosphorylation of SCIMP after binding beta-glucans (By similarity).

Discounts, Gifts,
and more!

