

Synonym

CLEC12A,MICL,CLL-1,CLL1,DCAL2,DCAL-2,CD371

Source

Human CLEC12A, Fc Tag(CLA-H5266) is expressed from human 293 cells (HEK293). It contains AA His 65 - Ala 265 (Accession # [Q5QGZ9-2](#)).

Predicted N-terminus: Pro

Molecular Characterization

Fc(Pro 100 - Lys 330) P01857	CLEC12A(His 65 - Ala 265) Q5QGZ9-2
---------------------------------	---------------------------------------

This protein carries a human IgG1 Fc tag at the N-terminus.

The protein has a calculated MW of 50.2 kDa. The protein migrates as 55-70 kDa under reducing (R) condition (SDS-PAGE) due to glycosylation.

Endotoxin

Less than 1.0 EU per µg by the LAL method / rFC method.

Purity

>95% as determined by SDS-PAGE.

>90% as determined by SEC-MALS.

Formulation

Lyophilized from 0.22 µm filtered solution in Tris with Glycine, Arginine and NaCl, pH7.5 with trehalose as protectant.

Contact us for customized product form or formulation.

Reconstitution

Please see Certificate of Analysis for specific instructions.

For best performance, we strongly recommend you to follow the reconstitution protocol provided in the CoA.

Storage

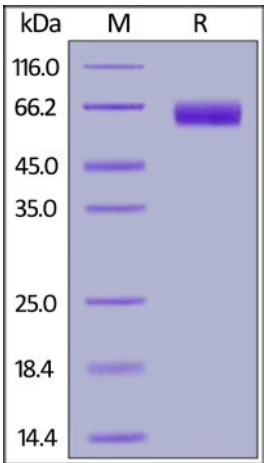
For long term storage, the product should be stored at lyophilized state at -20°C or lower.

Please avoid repeated freeze-thaw cycles.

This product is stable after storage at:

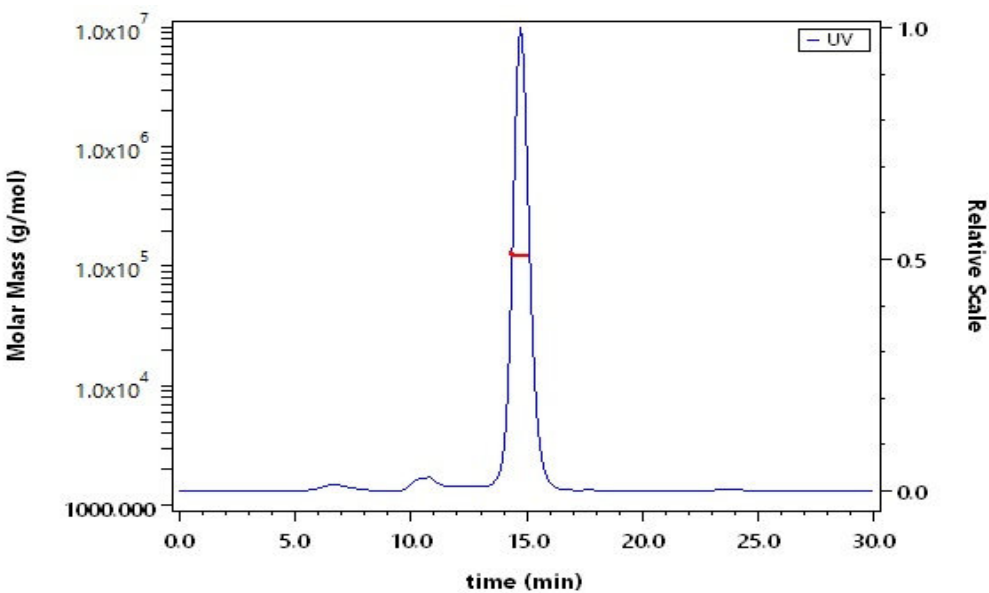
- 20°C to -70°C for 12 months in lyophilized state;
- 70°C for 3 months under sterile conditions after reconstitution.

SDS-PAGE



Human CLEC12A, Fc Tag on SDS-PAGE under reducing (R) condition. The gel was stained with Coomassie Blue. The purity of the protein is greater than 95%.

SEC-MALS

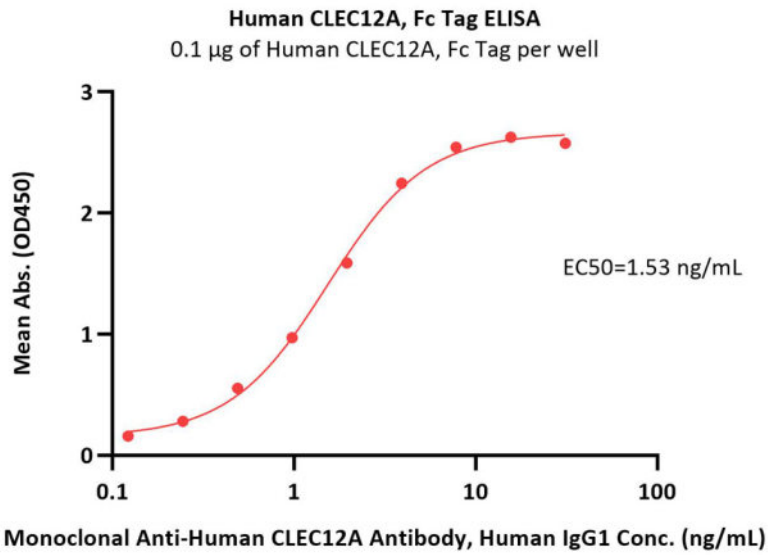


The purity of Human CLEC12A, Fc Tag (Cat. No. CLA-H5266) is more than 90% and the molecular weight of this protein is around 125-140 kDa verified by SEC-MALS.

[Report](#)

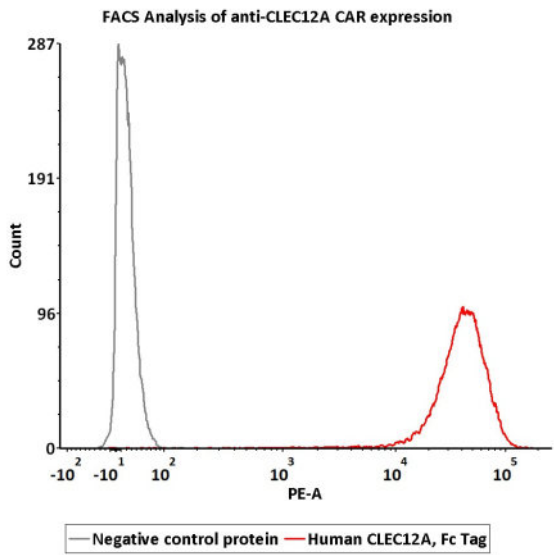
Bioactivity-ELISA





Immobilized Human CLEC12A, Fc Tag (Cat. No. CLA-H5266) at 1 µg/mL (100 µL/well) can bind Monoclonal Anti-Human CLEC12A Antibody, Human IgG1 with a linear range of 0.1-4 ng/mL (QC tested).

Bioactivity-FACS



2e5 of anti-CLEC12A CAR-293 cells were stained with 100µL of 3 µg/mL of Human CLEC12A, Fc Tag (Cat. No. CLA-H5266) and negative control protein respectively, washed and then followed by PE anti-human IgG Fc antibody and analyzed with FACS (Routinely tested).

Background

CLEC12A (C-type lectin domain family 12 member A) is also known as CLL1, DCAL2, MICL. Clec12a is an inhibitory receptor for uric acid crystals that regulates inflammation in response to cell death. Cell surface receptor that modulates signaling cascades and mediates tyrosine phosphorylation of target MAP kinases. Evidence of distinct disease propagating stem cells in myelodysplastic syndrome (MDS) has emerged in recent years. The role of CLEC12A in MDS, however, remains to be elucidated. Furthermore, CLEC12A has been proposed as a promising marker of leukaemic stem cells in AML.

Discounts, Gifts,
and more!

