

Synonym

CLEC4G,LSEctin

Source

Human LSEctin, Fc Tag(CLG-H5250) is expressed from human 293 cells (HEK293). It contains AA Lys 55 - Cys 293 (Accession # [Q6UXB4-1](#)).  
Predicted N-terminus: Glu

Molecular Characterization

Fc(Thr 108 - Lys 330) P01857	LSEctin(Lys 55 - Cys 293) Q6UXB4-1
---------------------------------	---------------------------------------

This protein carries a human IgG1 Fc tag at the N-terminus.  
The protein has a calculated MW of 52.1 kDa. The protein migrates as 58-66 kDa under reducing (R) condition (SDS-PAGE) due to glycosylation.

Endotoxin

Less than 1.0 EU per µg by the LAL method / rFC method.

Purity

>85% as determined by SDS-PAGE.

Formulation

Lyophilized from 0.22 µm filtered solution in 50 mM Tris, 100 mM Glycine, pH7.5 with trehalose as protectant.

Contact us for customized product form or formulation.

Reconstitution

Please see Certificate of Analysis for specific instructions.  
*For best performance, we strongly recommend you to follow the reconstitution protocol provided in the CoA.*

Storage

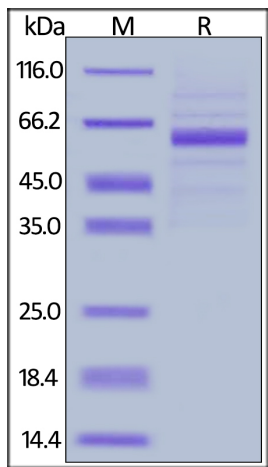
For long term storage, the product should be stored at lyophilized state at -20°C or lower.

*Please avoid repeated freeze-thaw cycles.*

This product is stable after storage at:

- 20°C to -70°C for 12 months in lyophilized state;
- 70°C for 3 months under sterile conditions after reconstitution.

SDS-PAGE



Human LSEctin, Fc Tag on SDS-PAGE under reducing (R) condition. The gel was stained with Coomassie Blue. The purity of the protein is greater than 85%.

Background

C-type lectin superfamily 4, member G (CLEC4G) is also known as liver and lymph node sinusoidal endothelial cell C-type lectin (LSEctin), which is a member of subgroup II of the C-type (Ca<sup>2+</sup>-dependent) lectin superfamily. CLEC4G / LSEctin binds to mannose, GlcNAc, and fucose in a Ca<sup>2+</sup>-dependent manner. In addition, CLEC4G / LSEctin has the ability to bind to surface glycoproteins of enveloped viruses. In particular, interaction of LSEctin with the surface

Discounts, Gifts,  
and more!



Human LSEctin / CLEC4G Protein, Fc Tag

Catalog # CLG-H5250



glycoproteins of severe acute respiratory syndrome (SARS) coronavirus and Ebola virus has been described, and LSEctin-mediated infection of cells by Ebola virus has been demonstrated.

Discounts, Gifts,  
and more!

