

Synonym

Chondroitin sulfate proteoglycan 4,CSPG4,MCSP,MCSPG,NG2

Source

Human CSPG4, His Tag(CS4-H52H3) is expressed from human 293 cells (HEK293). It contains AA Ala 30 - Ser 2224 (Accession # [Q6UVK1-1](#)).

Predicted N-terminus: Ala 30

Molecular Characterization

CSPG4(Ala 30 - Ser 2224)
Q6UVK1-1

Poly-his

This protein carries a polyhistidine tag at the C-terminus.

The protein has a calculated MW of 238.8 kDa. The protein migrates as 210-250 kDa under reducing (R) condition (SDS-PAGE) due to glycosylation.

Endotoxin

Less than 1.0 EU per µg by the LAL method / rFC method.

Purity

>95% as determined by SDS-PAGE.

>90% as determined by SEC-MALS.

Formulation

Lyophilized from 0.22 µm filtered solution in 20 mM HEPES, 150 mM NaCl, pH7.5 with trehalose as protectant.

Contact us for customized product form or formulation.

Reconstitution

Please see Certificate of Analysis for specific instructions.

For best performance, we strongly recommend you to follow the reconstitution protocol provided in the CoA.

Storage

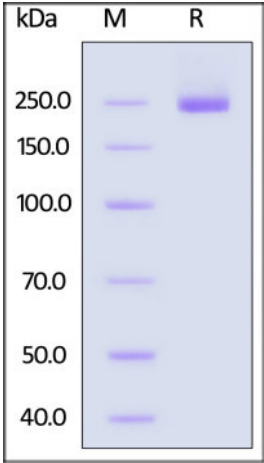
For long term storage, the product should be stored at lyophilized state at -20°C or lower.

Please avoid repeated freeze-thaw cycles.

This product is stable after storage at:

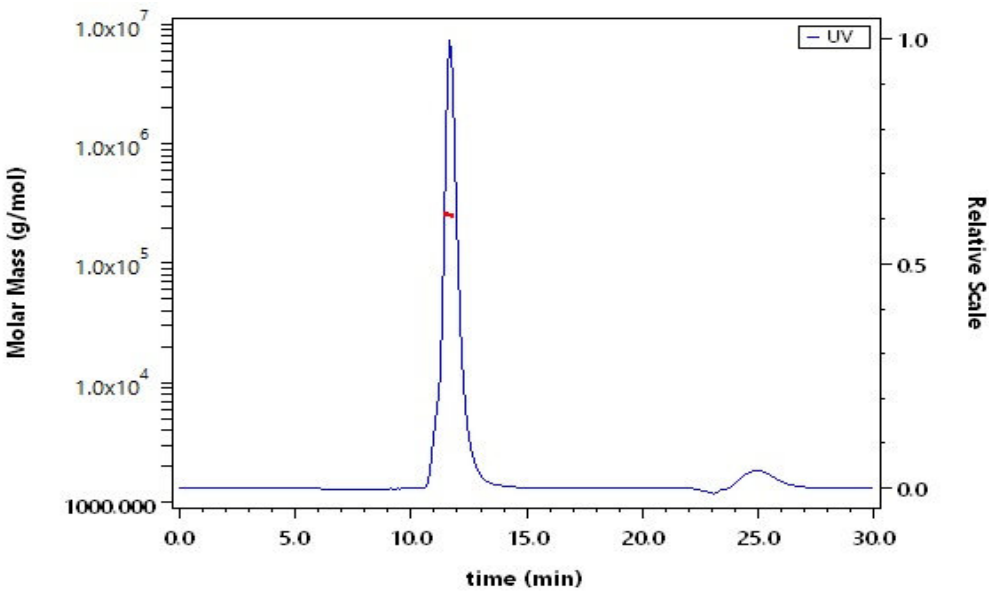
- 20°C to -70°C for 12 months in lyophilized state;
- 70°C for 3 months under sterile conditions after reconstitution.

SDS-PAGE



Human CSPG4, His Tag on SDS-PAGE under reducing (R) condition. The gel was stained with Coomassie Blue. The purity of the protein is greater than 95%.

SEC-MALS



The purity of Human CSPG4, His Tag (Cat. No. CS4-H52H3) is more than 90% and the molecular weight of this protein is around 240-270 kDa verified by SEC-MALS.

[Report](#)

Discounts, Gifts,
and more!



Background

Chondroitin sulfate proteoglycan 4, also as knowed melanoma-associated chondroitin sulfate proteoglycan (MCSP) is a chondroitin sulfate proteoglycan that in humans is encoded by the CSPG4 gene. CSPG4 plays a role in stabilizing cell-substratum interactions during early events of melanoma cell spreading on endothelial basement membranes. It represents an integral membrane chondroitin sulfate proteoglycan expressed by human malignant melanoma cells.

Discounts, Gifts,
and more!

