

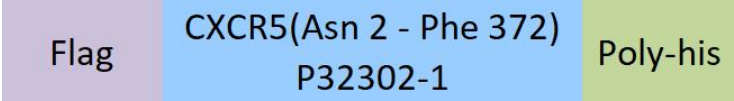
Synonym

BLR1, CD185, MDR15

Source

Human CXCR5 Protein, Flag,His Tag(CX5-H52D6) is expressed from human 293 cells (HEK293). It contains AA Asn 2 - Phe 372 (Accession # [P32302-1](#)).  
Predicted N-terminus: Asp

Molecular Characterization



This protein carries a flag tag at the N-terminus and a polyhistidine tag at the C-terminus.

The protein has a calculated MW of 44.9 kDa.

Endotoxin

Less than 1.0 EU per µg by the LAL method / rFC method.

Formulation

*This product is not suitable for cell based experiments due to cytotoxicity of DDM.*

*DDM and CHS are INDISPENSABLE to keep membrane protein soluble and active, under no circumstance should you remove DDM and CHS.*

*DDM/CHS buffer (DC-11) is sold separately and not included in protein, and please contact us if you need the buffer.*

*If glycerol is not compatible to your application, remove glycerol just before immediate experiment, and NEVER store glycerol-free protein solution.*

Supplied as 0.2 µm filtered solution in 50 mM HEPES, 150 mM NaCl, DDM, CHS, pH7.5 with glycerol as protectant.

Contact us for customized product form or formulation.

Shipping

*This product is supplied and shipped with dry ice, please inquire the shipping cost.*

Storage

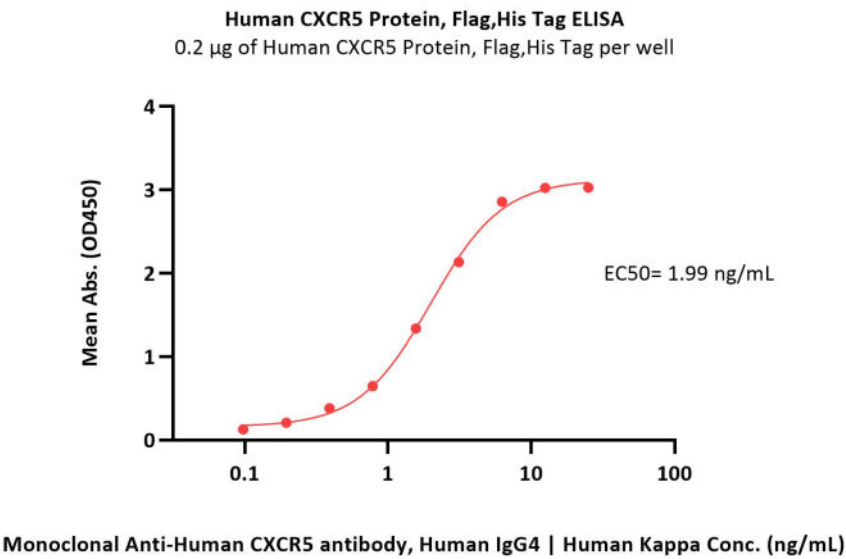
*Please avoid repeated freeze-thaw cycles.*

This product is stable after storage at:

- The product MUST be stored at -70°C or lower upon receipt;
- -70°C for 3 months under sterile conditions.

\*The DDM/CHS buffer (Cat. No. [DC-11](#)) is sold separately and not included in protein, you can follow [this link](#) for product information.

Bioactivity-ELISA



Immobilized Human CXCR5 Protein, Flag,His Tag at 2 µg/mL (100 µL/well) can bind Monoclonal Anti-Human CXCR5 antibody, Human IgG4 | Human Kappa with a linear range of 0.1-3.125 ng/mL (QC tested).

Discounts, Gifts,  
and more!



Background

This gene encodes a multi-pass membrane protein that belongs to the CXC chemokine receptor family. It is expressed in mature B-cells and Burkitt's lymphoma. This cytokine receptor binds to B-lymphocyte chemoattractant (BLC), and is involved in B-cell migration into B-cell follicles of spleen and Peyer patches. Alternatively spliced transcript variants encoding different isoforms have been described for this gene. [provided by RefSeq, Aug 2011]

Discounts, Gifts,  
and more!

