

Human DLL4 Protein, His Tag, low Endotoxin (MALS verified)

Catalog # DL4-H5227



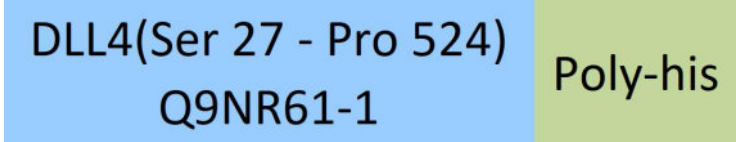
Synonym

DLL4,Delta4

Source

Human DLL4 Protein, His Tag(DL4-H5227) is expressed from human 293 cells (HEK293). It contains AA Ser 27 - Pro 524 (Accession # [Q9NR61-1](#)).  
Predicted N-terminus: Ser 27

Molecular Characterization



This protein carries a polyhistidine tag at the C-terminus.  
The protein has a calculated MW of 56.2 kDa. The protein migrates as 55-65 kDa when calibrated against [Star Ribbon Pre-stained Protein Marker](#) under reducing (R) condition (SDS-PAGE) due to glycosylation.

Endotoxin

Less than 0.01 EU per µg by the LAL method / rFC method.

Sterility

Negative

Mycoplasma

Negative

Purity

>95% as determined by SDS-PAGE.  
>95% as determined by SEC-MALS.

Formulation

Lyophilized from 0.22 µm filtered solution in PBS, pH7.4 with trehalose as protectant.  
Contact us for customized product form or formulation.

Reconstitution

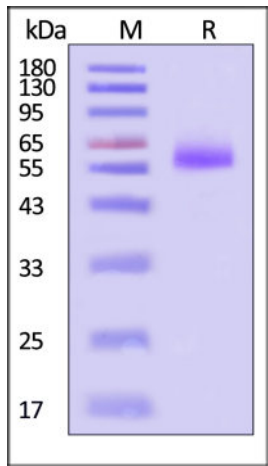
Please see Certificate of Analysis for specific instructions.  
*For best performance, we strongly recommend you to follow the reconstitution protocol provided in the CoA.*

Storage

For long term storage, the product should be stored at lyophilized state at -20°C or lower.  
*Please avoid repeated freeze-thaw cycles.*

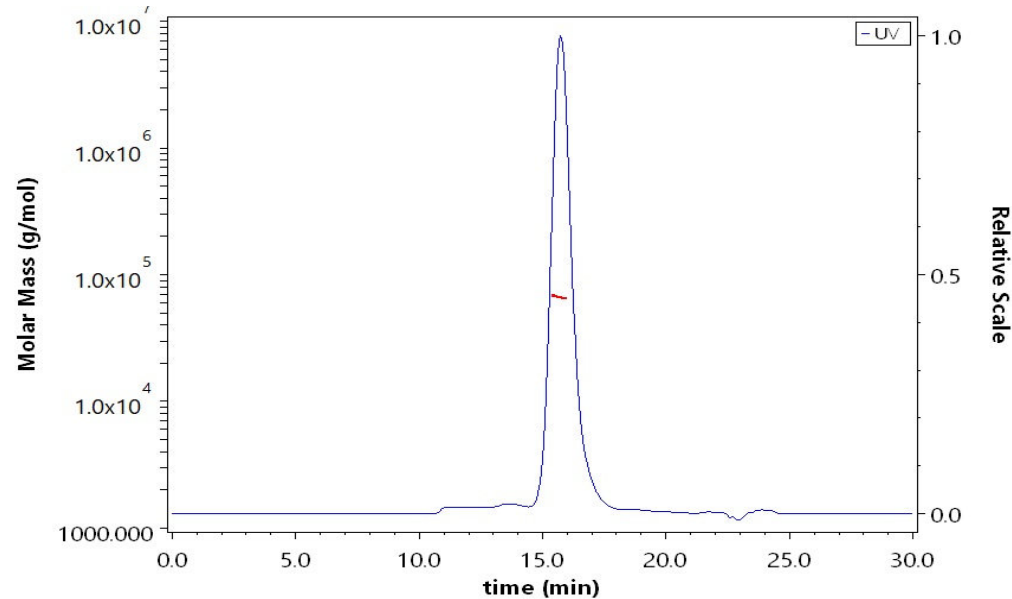
- This product is stable after storage at:
- 20°C to -70°C for 12 months in lyophilized state;
  - 70°C for 3 months under sterile conditions after reconstitution.

SDS-PAGE



Human DLL4 Protein, His Tag on SDS-PAGE under reducing (R) condition. The gel was stained with Coomassie Blue. The purity of the protein is greater than 95% (With [Star Ribbon Pre-stained Protein Marker](#)).

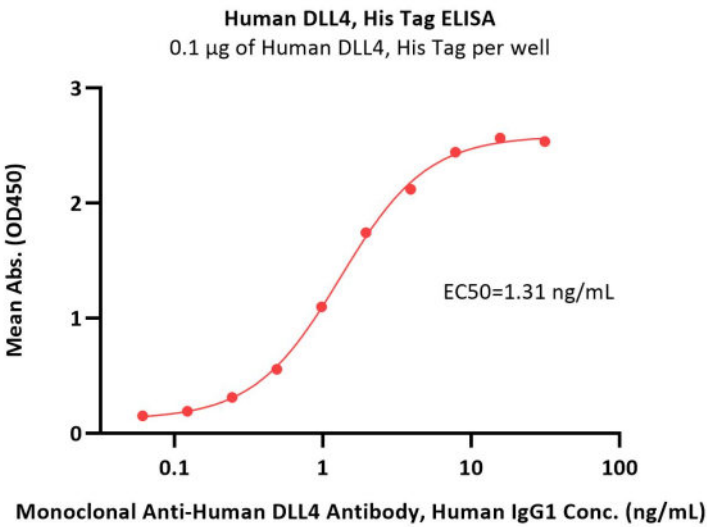
SEC-MALS



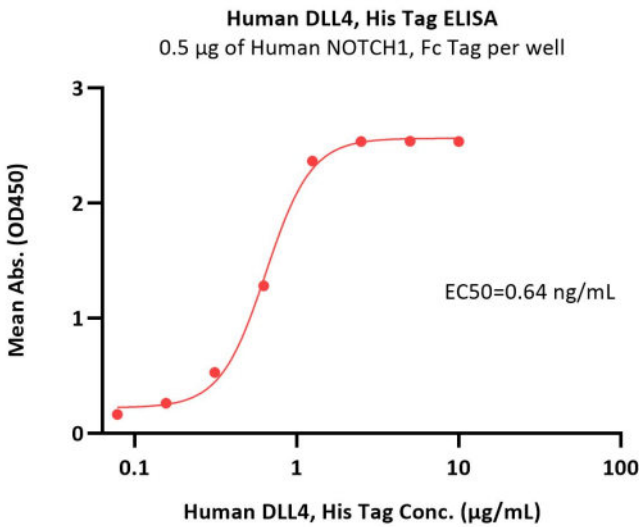
The purity of Human DLL4 Protein, His Tag (Cat. No. DL4-H5227) is more than 95% and the molecular weight of this protein is around 56-76 kDa verified by SEC-MALS.

[Report](#)

Bioactivity-ELISA



Immobilized Human DLL4 Protein, His Tag (Cat. No. DL4-H5227) at 1 µg/mL (100 µL/well) can bind Monoclonal Anti-Human DLL4 Antibody, Human IgG1 with a linear range of 0.1-4 ng/mL (QC tested).



Immobilized Human NOTCH1, Fc Tag (Cat. No. NO1-H5255) at 5 µg/mL (100 µL/well) can bind Human DLL4 Protein, His Tag (Cat. No. DL4-H5227) with a linear range of 0.078-1.25 µg/mL (Routinely tested).

Background

Delta-like protein 4 (DLL4) is also known as Drosophila Delta homolog 4 (Delta4), which contains one DSL domain and eight EGF-like domains. DLL4 is expressed in vascular endothelium. DLL4 is involved in the Notch signaling pathway as Notch ligand, which can activates NOTCH1 and NOTCH4. DLL4 is involved in angiogenesis and negatively regulates endothelial cell proliferation and migration and angiogenic sprouting. DLL4 can bind to Notch-1 and Notch-4.

