

Synonym

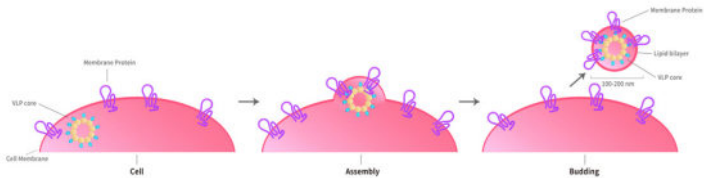
DRD1,Dopamine D1 receptor,D1R; DADR; DRD1A

Source

Human DRD1 Full Length Protein (VLP)(DR1-H52P6) is expressed from human 293 cells (HEK293). It contains AA Met 1 - Thr 446 (Accession # [P21728-1](#)).

Molecular Characterization

Virus-like particles(VLPs) are formed by self-assembly of capsid proteins from viruses. Membrane Proteins can be constituted in-situ with VLPs produced from HEK293 cell cultures. These VLPs concentrate conformationally intact membrane proteins directly on the cell surface and produce soluble, high-concentration proteins perfect for immunization and antibody screening.



The VLPs provide the display of properly folded membrane proteins in their native cellular membrane in a compact size of 100~300 nm diameter (similar to the size of most viruses) making it optimal targets for dendritic cells in vivo and surface attachment for phage display.

Endotoxin

Less than 1.0 EU per µg by the LAL method / rFC method.

*The isotype control of empty/mock VLP (Cat. No. [VLP-N5213](#)) is sold separately and not included in protein, you can follow [this link](#) for product information.

Formulation

The VLPs are highly immunogenic, so the immunization strategy should be optimized (antigen dose, regimen and adjuvant).

Supplied as 0.2 µm filtered solution in PBS, Arginine, pH7.4 with trehalose as protectant.

Contact us for customized product form or formulation.

Shipping

This product is supplied and shipped with dry ice, please inquire the shipping cost.

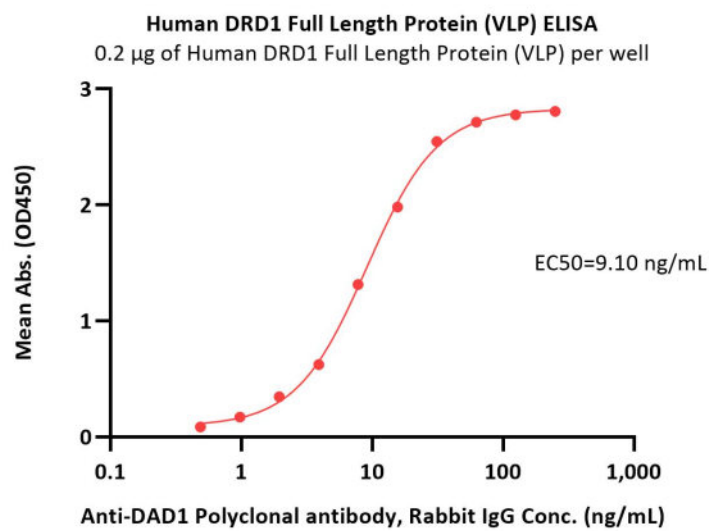
Storage

Please avoid repeated freeze-thaw cycles.

This product is stable after storage at:

- The product MUST be stored at -70°C or lower upon receipt;
- -70°C for 12 months under sterile conditions.

Bioactivity-ELISA



Immobilized Human DRD1 Full Length Protein (VLP) (Cat. No. DR1-H52P6) at 2 µg/mL (100 µL/well) can bind Anti-DAD1 Polyclonal antibody, Rabbit IgG with a linear range of 0.5-31 ng/mL (QC tested).

Discounts, Gifts,
and more!



Background

The dopamine receptor D1 (Drd1) is a member of the D1-like receptor family and is the most abundant dopamine receptor in the central nervous system. The receptor is found in the cortex, striatum and limbic system of the brain and the cardiovascular system.

Discounts, Gifts,
and more!

