

Synonym

Ephrin-A3,EFL-2,EHK1-L,LERK-3,EFNA3

Source

Human Ephrin-A3, Fc Tag(EA3-H5258) is expressed from human 293 cells (HEK293). It contains AA Gln 23 - Ser 213 (Accession # [AAI10407](#)).
Predicted N-terminus: Gln 23

Molecular Characterization

| | |
|---|---------------------------------|
| Ephrin-A3(Gln 23 - Ser 213) AAI10407 | Fc(Pro 100 - Lys 330) P01857 |
|---|---------------------------------|

This protein carries a human IgG1 Fc tag at the C-terminus.

The protein has a calculated MW of 48.4 kDa. The protein migrates as 60-65 kDa when calibrated against [Star Ribbon Pre-stained Protein Marker](#) under reducing (R) condition (SDS-PAGE) due to glycosylation.

Endotoxin

Less than 1.0 EU per µg by the LAL method / rFC method.

Purity

>90% as determined by SDS-PAGE.

Formulation

Lyophilized from 0.22 µm filtered solution in 100 mM Glycine, 150 mM Nacl, 25 mM Arginine, 50 mM Tris, pH7.5 with trehalose as protectant.

Contact us for customized product form or formulation.

Reconstitution

Please see Certificate of Analysis for specific instructions.

For best performance, we strongly recommend you to follow the reconstitution protocol provided in the CoA.

Storage

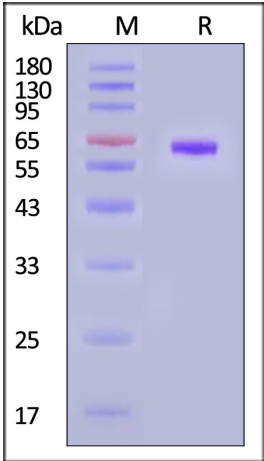
For long term storage, the product should be stored at lyophilized state at -20°C or lower.

Please avoid repeated freeze-thaw cycles.

This product is stable after storage at:

- 20°C to -70°C for 12 months in lyophilized state;
- 70°C for 3 months under sterile conditions after reconstitution.

SDS-PAGE



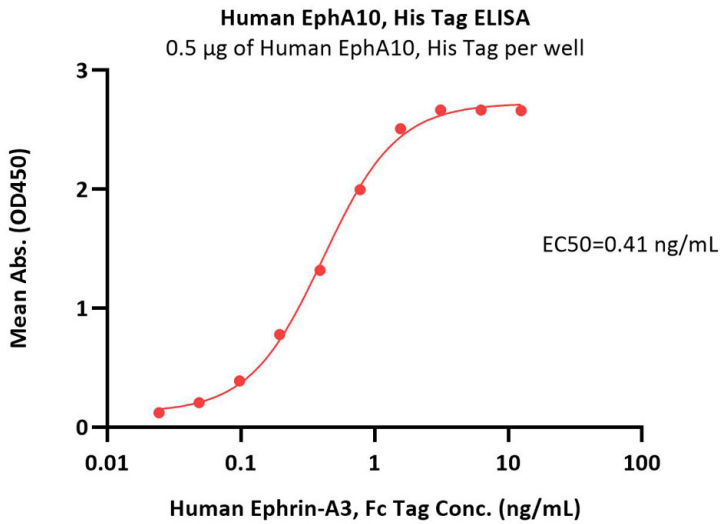
Human Ephrin-A3, Fc Tag on SDS-PAGE under reducing (R) condition. The gel was stained with Coomassie Blue. The purity of the protein is greater than 90% (With [Star Ribbon Pre-stained Protein Marker](#)).

Bioactivity-ELISA

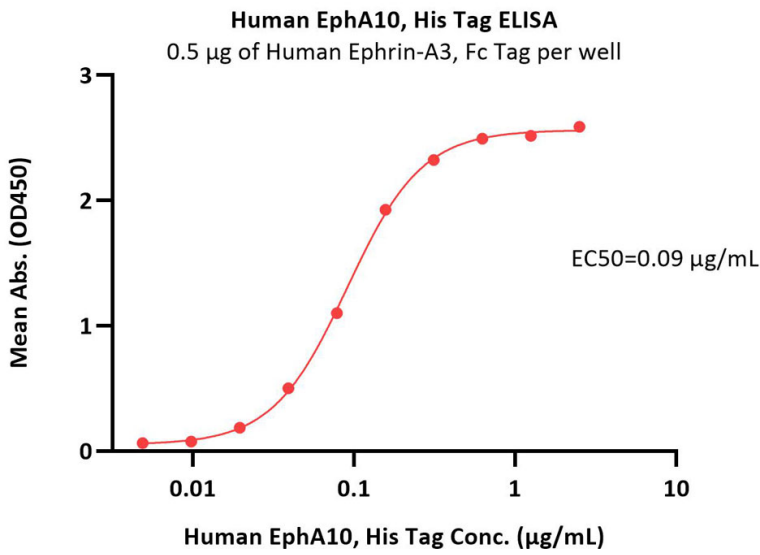


Human Ephrin-A3 / EFNA3 Protein, Fc Tag

Catalog # EA3-H5258



Immobilized Human EphA10, His Tag (Cat. No. EP0-H52H3) at 5 µg/mL (100 µL/well) can bind Human Ephrin-A3, Fc Tag (Cat. No. EA3-H5258) with a linear range of 0.1-2 ng/mL (Routinely tested).



Immobilized Human Ephrin-A3, Fc Tag (Cat. No. EA3-H5258) at 5 µg/mL (100 µL/well) can bind Human EphA10, His Tag (Cat. No. EP0-H52H3) with a linear range of 0.005-0.313 µg/mL (Routinely tested).

Background

Ephrin-A3 (Ephrin A3) is also known as EFL-2, EHK1 ligand, EHK1-L, EPH-related receptor tyrosine kinase ligand 3, EFL2, EPLG3 and LERK3, which comprises the largest subfamily of receptor protein-tyrosine kinases (RTKs), and has been involved in a variety of biological processes, especially in the nervous system and in erythropoiesis, such as axon guidance and topographic map formation, synaptic plasticity, angiogenesis, and meanwhile have possible contributions to tumor growth and metastasis. Ephrin A3 is cell surface GPI-bound ligand for Eph receptors and belongs to the family of receptor tyrosine kinases. Ephrin can bind promiscuously Eph receptors residing on adjacent cells, leading to contact-dependent bidirectional signaling into neighboring cells.

