

Synonym

EFNA4,EPLG4,LERK4,Ephrin-A4

Source

Human Ephrin-A4, Fc Tag(EA4-H5250) is expressed from human 293 cells (HEK293). It contains AA Leu 26 - Gly 171 (Accession # [AAI07484](#)).
Predicted N-terminus: Leu 26

Molecular Characterization

Ephrin-A4(Leu 26 - Gly 171) AAI07484	Fc(Pro 100 - Lys 330) P01857
---	---------------------------------

This protein carries a human IgG1 Fc tag at the C-terminus.

The protein has a calculated MW of 43.0 kDa. The protein migrates as 45-50 kDa and 66 kDa under reducing (R) condition (SDS-PAGE) due to glycosylation.

Endotoxin

Less than 1.0 EU per µg by the LAL method / rFC method.

Purity

>95% as determined by SDS-PAGE.

Formulation

Lyophilized from 0.22 µm filtered solution in Tris with Glycine, Arginine and NaCl, pH7.5 with trehalose as protectant.

Contact us for customized product form or formulation.

Reconstitution

Please see Certificate of Analysis for specific instructions.

For best performance, we strongly recommend you to follow the reconstitution protocol provided in the CoA.

Storage

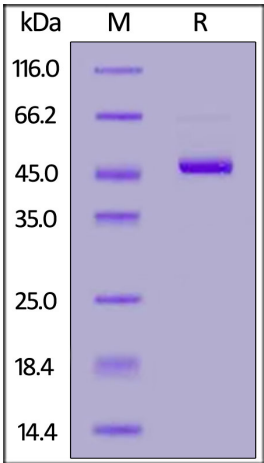
For long term storage, the product should be stored at lyophilized state at -20°C or lower.

Please avoid repeated freeze-thaw cycles.

This product is stable after storage at:

- 20°C to -70°C for 12 months in lyophilized state;
- 70°C for 3 months under sterile conditions after reconstitution.

SDS-PAGE



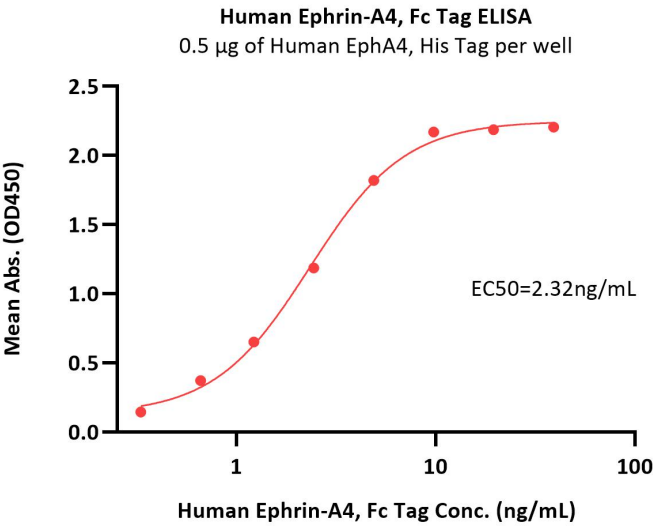
Human Ephrin-A4, Fc Tag on SDS-PAGE under reducing (R) condition. The gel was stained with Coomassie Blue. The purity of the protein is greater than 95%.

Bioactivity-ELISA



Human Ephrin-A4 / EFNA4 Protein, Fc Tag

Catalog # EA4-H5250



Immobilized Human EphA4, His Tag (Cat. No. EP4-H52H8) at 5 µg/mL (100 µL/well) can bind Human Ephrin-A4, Fc Tag (Cat. No. EA4-H5250) with a linear range of 0.6-5 ng/mL (QC tested).

Background

Ephrin-A4 (EFNA4) is also known as EPH-related receptor tyrosine kinase ligand 4 (LERK4), EPLG4, which belongs to the ephrin family. EFNA4 contains one ephrin RBD (ephrin receptor-binding) domain. EFNA4 is cell surface GPI-bound ligand for Eph receptors, a family of receptor tyrosine kinases which are crucial for migration, repulsion and adhesion during neuronal, vascular and epithelial development. EFNA4 binds promiscuously Eph receptors residing on adjacent cells, leading to contact-dependent bidirectional signaling into neighboring cells. EFNA4 may play a role in the interaction between activated B-lymphocytes and dendritic cells in tonsils.

Discounts, Gifts,
and more!

