

Synonym

EFNB1,EFL-3,ELK ligand,ELK-L,EPLG2,LERK2,CFND,CFNS

Source

Human Ephrin-B1, His Tag(EF1-H5223) is expressed from human 293 cells (HEK293). It contains AA Leu 28 - Gly 232 (Accession # [NP\\_004420](#)).  
Predicted N-terminus: Leu 28

Molecular Characterization

Ephrin-B1(Leu 28 - Gly 232)  
NP\_004420

Poly-his

This protein carries a polyhistidine tag at the C-terminus.  
The protein has a calculated MW of 23.6 kDa. The protein migrates as 32-40 kDa under reducing (R) condition (SDS-PAGE) due to glycosylation.

Endotoxin

Less than 1.0 EU per µg by the LAL method / rFC method.

Purity

>95% as determined by SDS-PAGE.

Formulation

Lyophilized from 0.22 µm filtered solution in PBS, pH7.4 with trehalose as protectant.

Contact us for customized product form or formulation.

Reconstitution

Please see Certificate of Analysis for specific instructions.

*For best performance, we strongly recommend you to follow the reconstitution protocol provided in the CoA.*

Storage

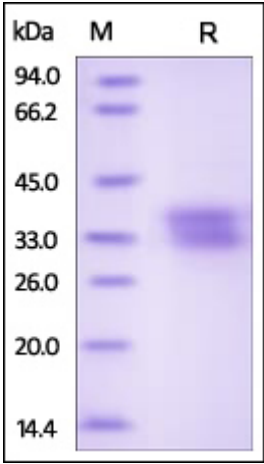
For long term storage, the product should be stored at lyophilized state at -20°C or lower.

*Please avoid repeated freeze-thaw cycles.*

This product is stable after storage at:

- 20°C to -70°C for 12 months in lyophilized state;
- 70°C for 3 months under sterile conditions after reconstitution.

SDS-PAGE



Human Ephrin-B1, His Tag on SDS-PAGE under reducing (R) condition. The gel was stained with Coomassie Blue. The purity of the protein is greater than 95%.

Background

Ephrin-B1 (EFNB1) is also known as EFL-3, ELK ligand, EPH-related receptor tyrosine kinase ligand 2 (LERK-2), which belongs to the ephrin family. EFNB1 contains one ephrin RBD (ephrin receptor-binding) domain. EFNB1 binds to the receptor tyrosine kinases EPHB1 and EPHA1. EFNB1 binds to, and induce the collapse of, commissural axons/growth cones in vitro. EFNB1 may play a role in constraining the orientation of longitudinally projecting axons. EFNB1 interacts with GRIP1 and GRIP2.

Discounts, Gifts,  
and more!



Human Ephrin-B1 / EFNB1 Protein, His Tag

Catalog # EF1-H5223

