

Synonym

EFNA1,Ephrin-A1,LERK-1,TNFAIP4,EPLG1,B61,ECKLG,EFL1

Source

Human Ephrin-A1, Fc Tag(EF1-H5251) is expressed from human 293 cells (HEK293). It contains AA Asp 19 - Ser 182 (Accession # [P20827-1](#)).
Predicted N-terminus: Asp 19

Molecular Characterization

Ephrin-A1(Asp 19 - Ser 182) P20827-1	Fc(Pro 100 - Lys 330) P01857
---	---------------------------------

This protein carries a human IgG1 Fc tag at the C-terminus.

The protein has a calculated MW of 46.0 kDa. The protein migrates as 53-57 kDa under reducing (R) condition, and 100-115 kDa under non-reducing (NR) condition (SDS-PAGE) due to glycosylation.

Endotoxin

Less than 1.0 EU per µg by the LAL method / rFC method.

Purity

>95% as determined by SDS-PAGE.

Formulation

Lyophilized from 0.22 µm filtered solution in 50 mM Tris, 100 mM Glycine, pH7.5 with trehalose as protectant.

Contact us for customized product form or formulation.

Reconstitution

Please see Certificate of Analysis for specific instructions.

For best performance, we strongly recommend you to follow the reconstitution protocol provided in the CoA.

Storage

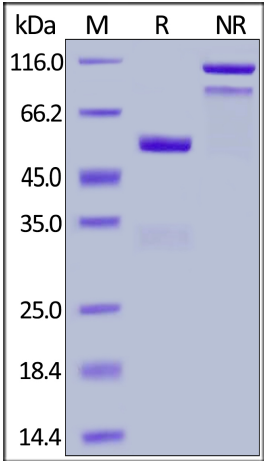
For long term storage, the product should be stored at lyophilized state at -20°C or lower.

Please avoid repeated freeze-thaw cycles.

This product is stable after storage at:

- 20°C to -70°C for 12 months in lyophilized state;
- 70°C for 3 months under sterile conditions after reconstitution.

SDS-PAGE



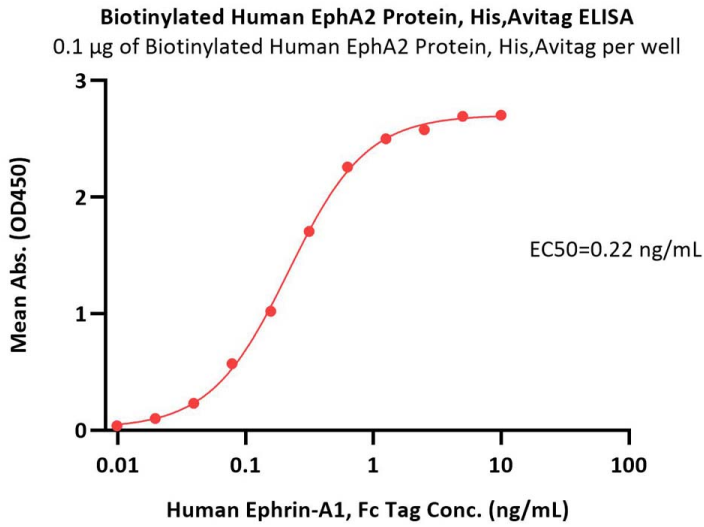
Human Ephrin-A1, Fc Tag on SDS-PAGE under reducing (R) and non-reducing (NR) conditions. The gel was stained with Coomassie Blue. The purity of the protein is greater than 95%.

Bioactivity-ELISA



Human Ephrin-A1 / EFNA1 Protein, Fc Tag

Catalog # EF1-H5251



Immobilized Biotinylated Human EphA2 Protein, His,Avitag (Cat. No. EP2-H82E4) at 1 µg/mL (100 µL/well) on streptavidin (Cat. No. STN-N5116) precoated (0.5 µg/well) plate can bind Human Ephrin-A1, Fc Tag (Cat. No. EF1-H5251) with a linear range of 0.1-1 ng/mL (QC tested).

Background

Ephrin-A1 (EFNA1) is also known as EPLG1, LERK1, TNFAIP4, Immediate early response protein B61, which belongs to the ephrin family. EFNA1 contains one ephrin RBD (ephrin receptor-binding) domain. EFNA1 is cell surface GPI-bound ligand for Eph receptors, and is a family of receptor tyrosine kinases which are crucial for migration, repulsion and adhesion during neuronal, vascular and epithelial development. EFNA1 binds promiscuously Eph receptors residing on adjacent cells, leading to contact-dependent bidirectional signaling into neighboring cells. EFNA1 plays an important role in angiogenesis and tumor neovascularization.

