

Synonym

EGFR,ERBB,ERBB1,HER1,PIG61,mENA

Source

Human EGF R, Fc Tag(EGR-H5252) is expressed from human 293 cells (HEK293). It contains AA Leu 25 - Ser 645 (Accession # [P00533-1](#)).

Predicted N-terminus: Leu 25

Molecular Characterization

EGF R(Leu 25 - Ser 645) P00533-1	Fc(Pro 100 - Lys 330) P01857
-------------------------------------	---------------------------------

This protein carries a human IgG1 Fc tag at the C-terminus.

The protein has a calculated MW of 94.7 kDa. The protein migrates as 110-140 kDa when calibrated against [Star Ribbon Pre-stained Protein Marker](#) under reducing (R) condition (SDS-PAGE) due to glycosylation.

Endotoxin

Less than 1.0 EU per µg by the LAL method / rFC method.

Purity

>95% as determined by SDS-PAGE.

>90% as determined by SEC-MALS.

Formulation

Lyophilized from 0.22 µm filtered solution in PBS, pH7.4 with trehalose as protectant.

Contact us for customized product form or formulation.

Reconstitution

Please see Certificate of Analysis for specific instructions.

*For best performance, we strongly recommend you to follow the reconstitution protocol provided in the CoA.*

Storage

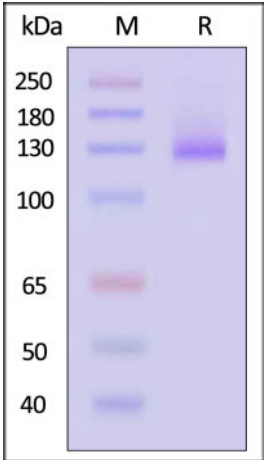
For long term storage, the product should be stored at lyophilized state at -20°C or lower.

*Please avoid repeated freeze-thaw cycles.*

This product is stable after storage at:

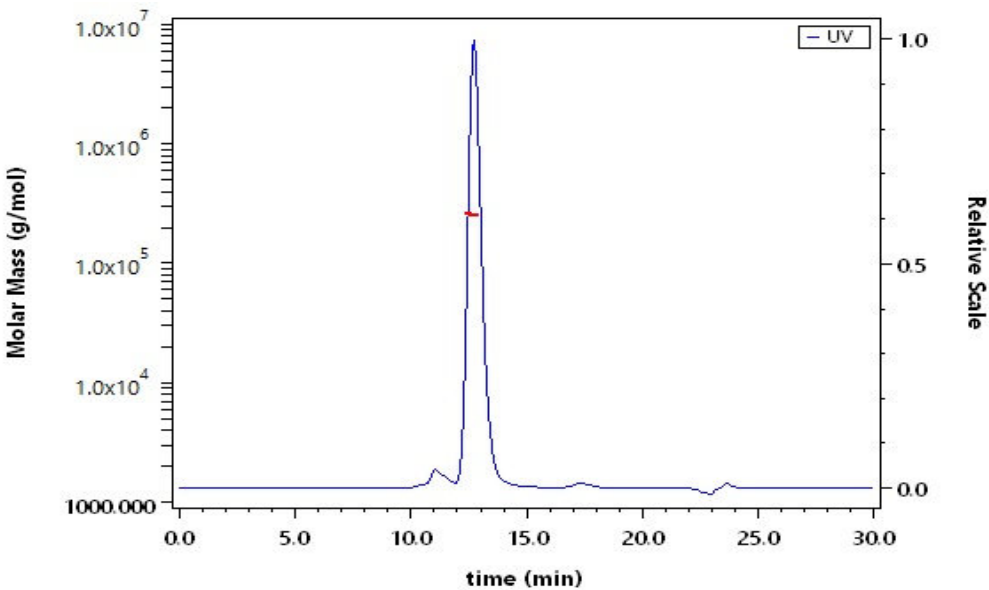
- 20°C to -70°C for 12 months in lyophilized state;
- 70°C for 3 months under sterile conditions after reconstitution.

SDS-PAGE



Human EGF R, Fc Tag on SDS-PAGE under reducing (R) condition. The gel was stained with Coomassie Blue. The purity of the protein is greater than 95% (With [Star Ribbon Pre-stained Protein Marker](#)).

SEC-MALS

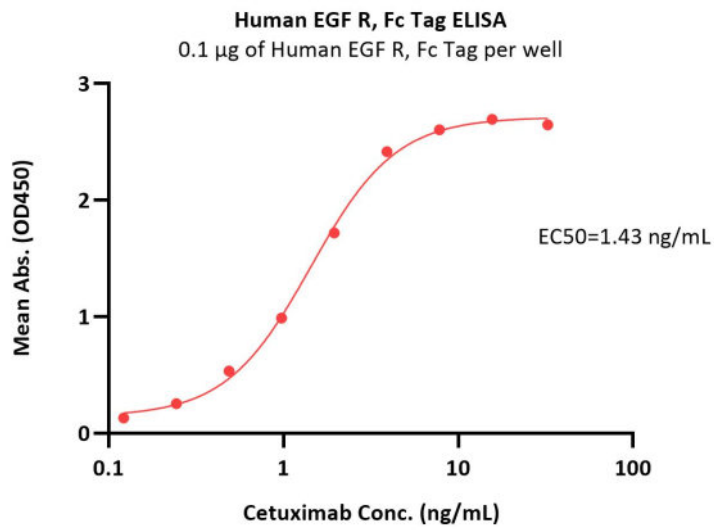
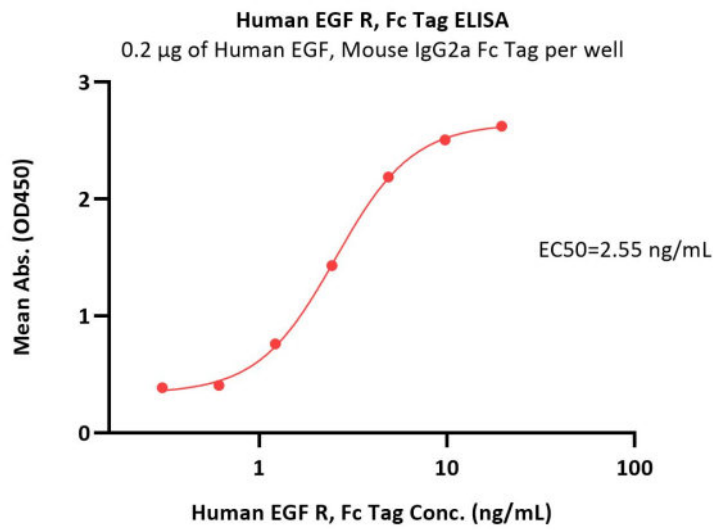


The purity of Human EGF R, Fc Tag (Cat. No. EGR-H5252) is more than 90% and the molecular weight of this protein is around 220-260 kDa verified by SEC-MALS.

[Report](#)

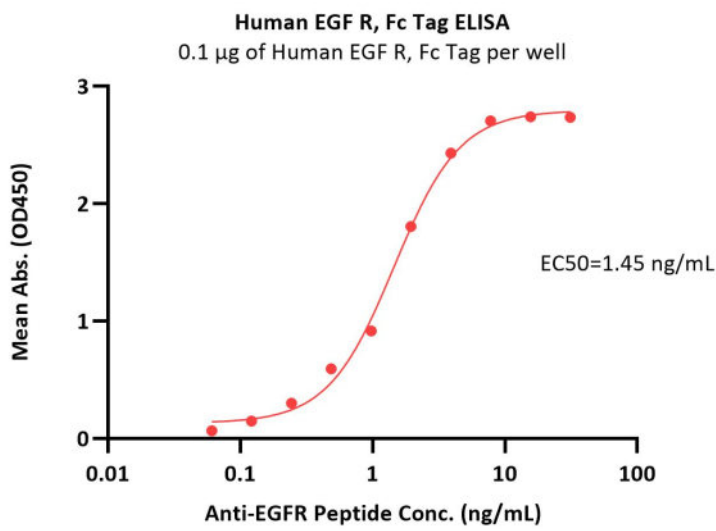
Bioactivity-ELISA





Immobilized Human EGF, Mouse IgG2a Fc Tag (Cat. No. EGF-H525b) at 2 µg/mL (100 µL/well) can bind Human EGF R, Fc Tag (Cat. No. EGR-H5252) with a linear range of 0.3-5 ng/mL (QC tested).

Immobilized Human EGF R, Fc Tag (Cat. No. EGR-H5252) at 1 µg/mL (100 µL/well) can bind Cetuximab with a linear range of 0.1-2 ng/mL (Routinely tested).



Immobilized Human EGF R, Fc Tag (Cat. No. EGR-H5252) at 1 µg/mL (100 µL/well) can bind Anti-EGFR Peptide with a linear range of 0.06-2 ng/mL (Routinely tested).

Background

The epidermal growth factor receptor (EGFR; ErbB-1; HER1 in humans) is the cell-surface receptor for members of the epidermal growth factor family (EGF-family) of extracellular protein ligands. The epidermal growth factor receptor is a member of the ErbB family of receptors, a subfamily of four closely related receptor tyrosine kinases: EGFR (ErbB-1), HER2/c-neu (ErbB-2), Her 3 (ErbB-3) and Her 4 (ErbB-4). Mutations affecting EGFR expression or activity could result in cancer.

Discounts, Gifts,  
and more!

