

Synonym

EGFR,ERBB,ERBB1,HER1,PIG61,mENA

Source

FITC-Labeled Human EGF R, Fc Tag (EGR-HF256) is expressed from human 293 cells (HEK293). It contains AA Leu 25 - Ser 645 (Accession # [P00533-1](#)). It is the FITC labeled form of Human EGF R, Fc Tag (Cat. No. EGR-H5252).  
Predicted N-terminus: Leu 25

Molecular Characterization

EGF R(Leu 25 - Ser 645) P00533-1	Fc(Pro 100 - Lys 330) P01857
-------------------------------------	---------------------------------

This protein carries a human IgG1 Fc tag at the C-terminus.  
The protein has a calculated MW of 94.7 kDa. The protein migrates as 130-150 kDa under reducing (R) condition (SDS-PAGE) due to glycosylation.

Conjugate

FITC  
Excitation source: 488 nm spectral line, argon-ion laser  
Excitation Wavelength: 488 nm  
Emission Wavelength: 535 nm

Labeling

*The primary amines in the side chains of lysine residues and the N-terminus of the protein are conjugated with FITC using standard chemical labeling method. The residual FITC is removed by molecular sieve treatment during purification process.*

Protein Ratio

The FITC to protein molar ratio is 1-3.

Purity

>95% as determined by SDS-PAGE.

Formulation

Lyophilized from 0.22 µm filtered solution in PBS, pH7.4 with trehalose as protectant.  
Contact us for customized product form or formulation.

Reconstitution

Please see Certificate of Analysis for specific instructions.  
*For best performance, we strongly recommend you to follow the reconstitution protocol provided in the CoA.*

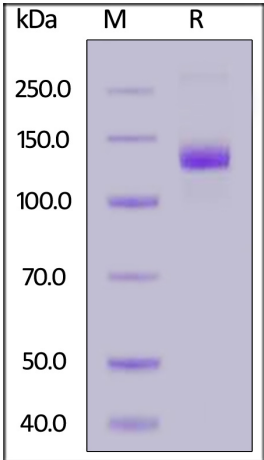
Storage

For long term storage, the product should be stored at lyophilized state at -20°C or lower.  
*Please protect from light and avoid repeated freeze-thaw cycles.*

This product is stable after storage at:

- 20°C to -70°C for 12 months in lyophilized state;
- 70°C for 3 months under sterile conditions after reconstitution.

SDS-PAGE



FITC-Labeled Human EGF R, Fc Tag on SDS-PAGE under reducing (R) condition. The gel was stained with Coomassie Blue. The purity of the protein



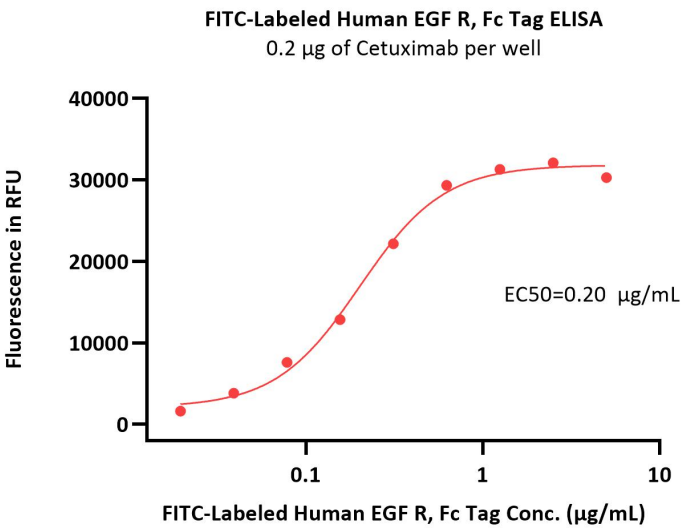
FITC-Labeled Human EGF R Protein, Fc Tag

Catalog # EGR-HF256



is greater than 95%.

Bioactivity-ELISA



Immobilized Cetuximab at 2 µg/mL (100 µL/well) can bind FITC-Labeled Human EGF R, Fc Tag (Cat. No. EGR-HF256) with a linear range of 0.02-0.625 µg/mL (QC tested).

Background

The epidermal growth factor receptor (EGFR; ErbB-1; HER1 in humans) is the cell-surface receptor for members of the epidermal growth factor family (EGF-family) of extracellular protein ligands. The epidermal growth factor receptor is a member of the ErbB family of receptors, a subfamily of four closely related receptor tyrosine kinases: EGFR (ErbB-1), HER2/c-neu (ErbB-2), Her 3 (ErbB-3) and Her 4 (ErbB-4). Mutations affecting EGFR expression or activity could result in cancer.

Discounts, Gifts,  
and more!

