

Human EphA4 Protein, His Tag

Catalog # EP4-H52H8



Synonym

EphA4,HEK8,SEK,TYRO1,EK8

Source

Human EphA4, His Tag(EP4-H52H8) is expressed from human 293 cells (HEK293). It contains AA Val 20 - Thr 547 (Accession # [P54764-1](#)).  
Predicted N-terminus: Val 20

Molecular Characterization

EphA4(Val 20 - Thr 547)  
P54764-1

Poly-his

This protein carries a polyhistidine tag at the C-terminus.  
The protein has a calculated MW of 60.3 kDa. The protein migrates as 65-80 kDa under reducing (R) condition (SDS-PAGE) due to glycosylation.

Endotoxin

Less than 1.0 EU per µg by the LAL method / rFC method.

Purity

>95% as determined by SDS-PAGE.

Formulation

Lyophilized from 0.22 µm filtered solution in PBS, pH7.4 with trehalose as protectant.

Contact us for customized product form or formulation.

Reconstitution

Please see Certificate of Analysis for specific instructions.

*For best performance, we strongly recommend you to follow the reconstitution protocol provided in the CoA.*

Storage

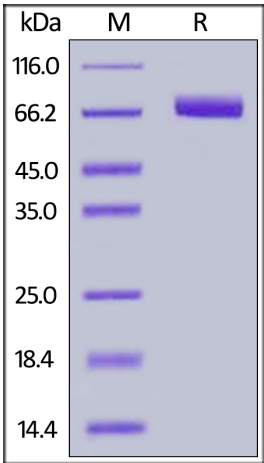
For long term storage, the product should be stored at lyophilized state at -20°C or lower.

*Please avoid repeated freeze-thaw cycles.*

This product is stable after storage at:

- 20°C to -70°C for 12 months in lyophilized state;
- 70°C for 3 months under sterile conditions after reconstitution.

SDS-PAGE



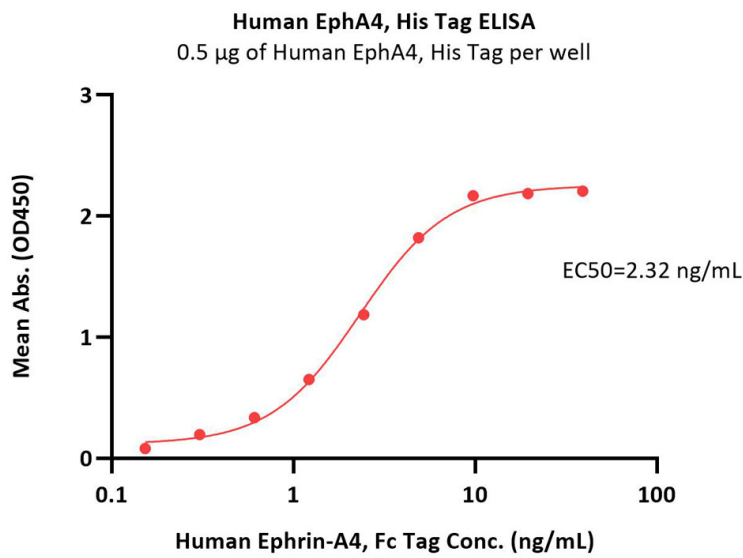
Human EphA4, His Tag on SDS-PAGE under reducing (R) condition. The gel was stained with Coomassie Blue. The purity of the protein is greater than 95%.

Bioactivity-ELISA



Human EphA4 Protein, His Tag

Catalog # EP4-H52H8



Immobilized Human EphA4, His Tag (Cat. No. EP4-H52H8) at 5 µg/mL (100 µL/well) can bind Human Ephrin-A4, Fc Tag (Cat. No. EA4-H5250) with a linear range of 0.6-5 ng/mL (QC tested).

Background

Receptor tyrosine kinase which binds promiscuously membrane-bound ephrin-A family ligands residing on adjacent cells, leading to contact-dependent bidirectional signaling into neighboring cells. The signaling pathway downstream of the receptor is referred to as forward signaling while the signaling pathway downstream of the ephrin ligand is referred to as reverse signaling. Activated by the ligand ephrin-A1/EFNA1 regulates migration, integrin-mediated adhesion, proliferation and differentiation of cells. Regulates cell adhesion and differentiation through DSG1/desmoglein-1 and inhibition of the ERK1/ERK2 (MAPK3/MAPK1, respectively) signaling pathway. Engaged by the ligand ephrin-A5/EFNA5 may regulate lens fiber cells shape and interactions and be important for lens transparency development and maintenance. With ephrin-A2/EFNA2 may play a role in bone remodeling through regulation of osteoclastogenesis and osteoblastogenesis.

