

Synonym

EPCAM,TACSTD1,TROP1,CD326,DIAR5,EGP2,EGP314,EGP40,ESA,GA733-2,HNPCC8,HNPCC-8,KS1,4,KSA,M4S1,MIC18,MK1

Source

Rhesus macaque EpCAM, His Tag(EPM-C5227) is expressed from human 293 cells (HEK293). It contains AA Gln 24 - Lys 265 (Accession # [Q1WER1](#)).  
Predicted N-terminus: Gln 24

Molecular Characterization

EpCAM(Gln 24 - Lys 265)  
Q1WER1

Poly-his

This protein carries a polyhistidine tag at the C-terminus.  
The protein has a calculated MW of 28.2 kDa. The protein migrates as 33 kDa and 35 kDa when calibrated against [Star Ribbon Pre-stained Protein Marker](#) under reducing (R) condition (SDS-PAGE) due to glycosylation.

Endotoxin

Less than 1.0 EU per µg by the LAL method / rFC method.

Purity

>95% as determined by SDS-PAGE.

Formulation

Lyophilized from 0.22 µm filtered solution in PBS, pH7.4 with trehalose as protectant.  
Contact us for customized product form or formulation.

Reconstitution

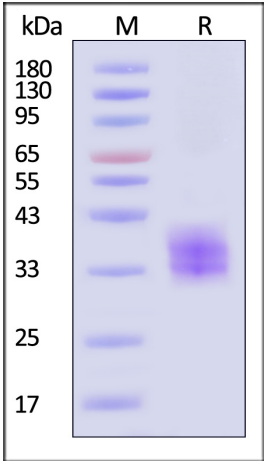
Please see Certificate of Analysis for specific instructions.  
*For best performance, we strongly recommend you to follow the reconstitution protocol provided in the CoA.*

Storage

For long term storage, the product should be stored at lyophilized state at -20°C or lower.  
*Please avoid repeated freeze-thaw cycles.*  
This product is stable after storage at:

- 20°C to -70°C for 12 months in lyophilized state;
- 70°C for 3 months under sterile conditions after reconstitution.

SDS-PAGE

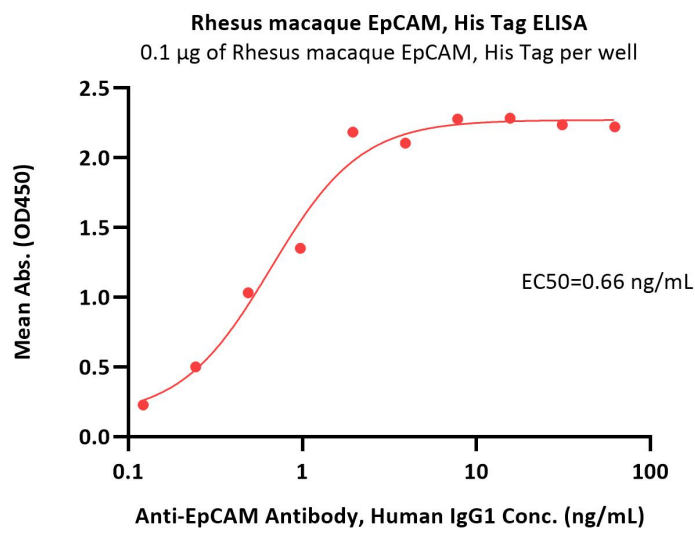


Rhesus macaque EpCAM, His Tag on SDS-PAGE under reducing (R) condition. The gel was stained with Coomassie Blue. The purity of the protein is greater than 95% (With [Star Ribbon Pre-stained Protein Marker](#)).

Bioactivity-ELISA

Discounts, Gifts,  
and more!





Immobilized Rhesus macaque EpCAM, His Tag (Cat. No. EPM-C5227) at 1 µg/mL (100 µL/well) can bind Anti-EpCAM Antibody, Human IgG1 with a linear range of 0.1-2 ng/mL (QC tested).

Background

EpCAM is also known as CO171A, EGP, EGP40,GA7332, KSA, M4S, MIC18, MK1, TROP1, hEGP2, and is a pan-epithelial differentiation antigen that is expressed on almost all carcinomas as 17-1A(mAb) antigen. Its constitutional function is being elucidated. It is intricately linked with the Cadherin-Catenin pathway and hence the fundamental WNT pathway responsible for intracellular signaling and polarity. The epithelial cell adhesion molecule (Ep-CAM) is known to express in most epithelial malignancies and was reported as a tumor marker or a candidate of molecular targeting therapy.

Ep-CAM cross signaling with N-cadherin involves Pi3K, resulting in the abrogation of the cadherin adhesion complexes in epithelial cells was reported. And Epithelial cell adhesion molecule (Ep-CAM) recently received increased attention as a prognostic factor in breast cancer.

