

Synonym

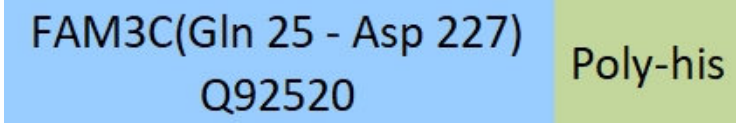
GS3786, ILEI

Source

Human FAM3C Protein, His Tag(FAC-H52H3) is expressed from human 293 cells (HEK293). It contains AA Gln 25 - Asp 227 (Accession # [Q92520](#)).

Predicted N-terminus: Gln 25

Molecular Characterization



This protein carries a polyhistidine tag at the C-terminus.

The protein has a calculated MW of 24 kDa. The protein migrates as 25-30 kDa when calibrated against [Star Ribbon Pre-stained Protein Marker](#) under reducing (R) condition (SDS-PAGE) due to glycosylation.

Endotoxin

Less than 1.0 EU per µg by the LAL method / rFC method.

Purity

>90% as determined by SDS-PAGE.

>90% as determined by SEC-MALS.

Formulation

Lyophilized from 0.22 µm filtered solution in PBS, pH7.4 with trehalose as protectant.

Contact us for customized product form or formulation.

Reconstitution

Please see Certificate of Analysis for specific instructions.

For best performance, we strongly recommend you to follow the reconstitution protocol provided in the CoA.

Storage

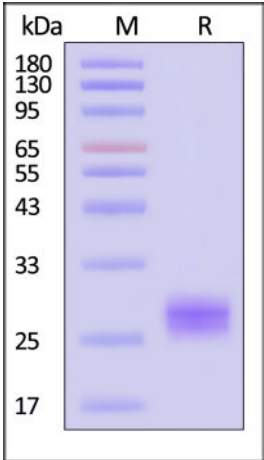
For long term storage, the product should be stored at lyophilized state at -20°C or lower.

Please avoid repeated freeze-thaw cycles.

This product is stable after storage at:

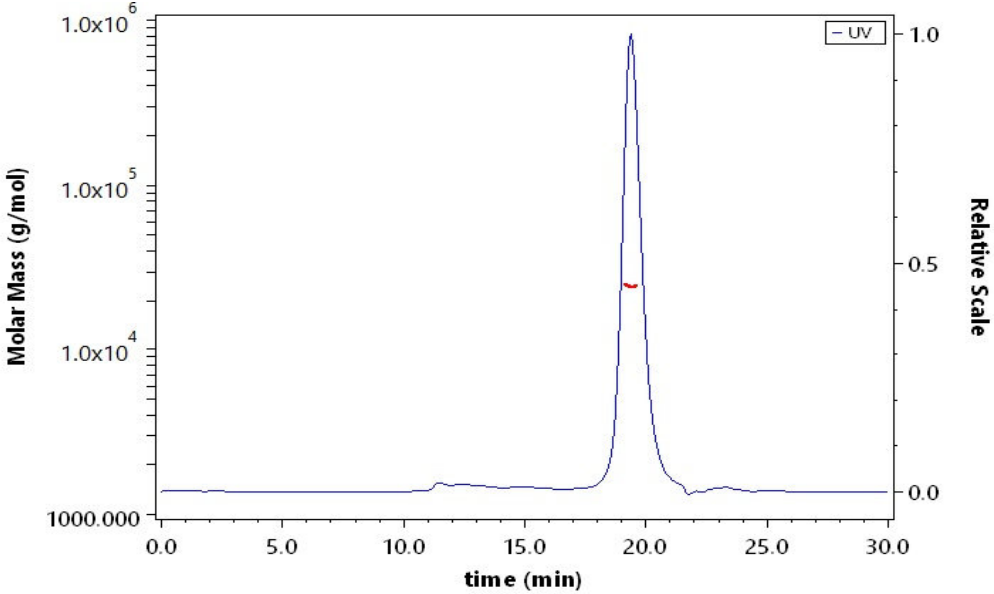
- -20°C to -70°C for 12 months in lyophilized state;
- -70°C for 3 months under sterile conditions after reconstitution.

SDS-PAGE



Human FAM3C Protein, His Tag on SDS-PAGE under reducing (R) condition. The gel was stained with Coomassie Blue. The purity of the protein is greater than 90% (With [Star Ribbon Pre-stained Protein Marker](#)).

SEC-MALS



The purity of Human FAM3C Protein, His Tag (Cat. No. FAC-H52H3) is more than 90% and the molecular weight of this protein is around 20-32 kDa verified by SEC-MALS.

[Report](#)

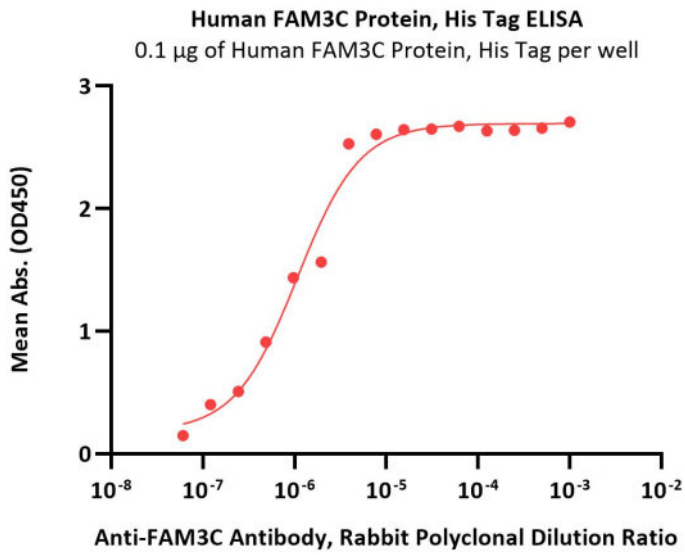
Bioactivity-ELISA

Discounts, Gifts,
and more!



Human FAM3C Protein, His Tag (MALS verified)

Catalog # FAC-H52H3



Immobilized Human FAM3C Protein, His Tag (Cat. No. FAC-H52H3) at 1 µg/mL (100 µL/well) can bind various dilution ratio of Anti-FAM3C Antibody, Rabbit Polyclonal (QC tested).

Background

FAM3C, is a member of the Family with Sequence Similarity 3 (FAM3) cytokine family, also called Interleukine-like EMT inducer (ILEI). FAM3C is widely expressed in the human secretory epithelia and participates in numerous biological processes, including hepatic glucose and lipid metabolism , osteogenic differentiation , retinal laminar formation and brain amyloid-β (Aβ) peptide production. It has been described as an important cytokine for invasion, epithelial-mesenchymal transition (EMT), and cancer metastasis.

