

Synonym

FGL1, Hepassocin, HP-041, HFREP-1, LFIRE-1, HFREP1

Source

Cynomolgus / Rhesus macaque FGL1, Mouse IgG2a Fc Tag (FG1-C5250) is expressed from human 293 cells (HEK293). It contains AA Leu 23 - Ile 312 (Accession # [G7N0K6-1](#)).

Predicted N-terminus: Glu

Molecular Characterization

mFc(Glu 98 - Lys 330) P01863	FGL1(Leu 23 - Ile 312) G7N0K6-1
---------------------------------	------------------------------------

[Other Tags and Version](#) [Biotin & Other Labeled Version](#)

This protein carries a mouse IgG2a Fc tag at the N-terminus.
The protein has a calculated MW of 60.8 kDa. The protein migrates as 60-66 kDa under reducing (R) condition (SDS-PAGE) due to glycosylation.

Endotoxin

Less than 0.1 EU per µg by the LAL method / rFC method.

Purity

>90% as determined by SDS-PAGE.

Formulation

Lyophilized from 0.22 µm filtered solution in 50 mM Tris, 100 mM Glycine, 150 mM NaCl, pH7.5 with trehalose as protectant.
Contact us for customized product form or formulation.

Reconstitution

Please see Certificate of Analysis for specific instructions.
For best performance, we strongly recommend you to follow the reconstitution protocol provided in the CoA.

Storage

For long term storage, the product should be stored at lyophilized state at -20°C or lower.
Please avoid repeated freeze-thaw cycles.

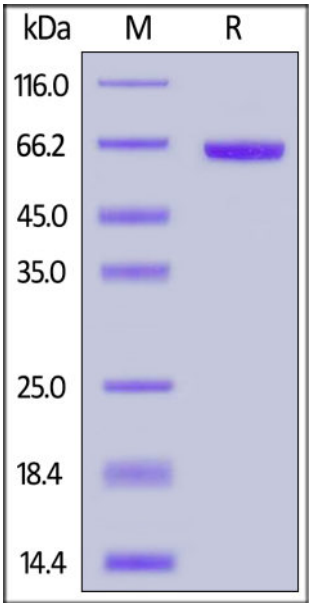
This product is stable after storage at:

- -20°C to -70°C for 12 months in lyophilized state;
- -70°C for 3 months under sterile conditions after reconstitution.

ACRO Quality Management System

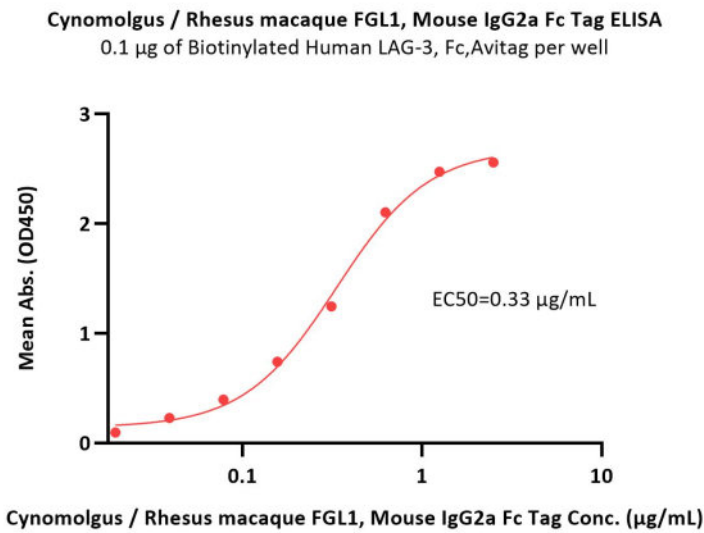
- [QMS\(ISO, GMP\)](#)
- [Quality Advantages](#)
- [Quality Control Process](#)

SDS-PAGE



Cynomolgus / Rhesus macaque FGL1, Mouse IgG2a Fc Tag on SDS-PAGE under reducing (R) condition. The gel was stained with Coomassie Blue. The purity of the protein is greater than 90%.

Bioactivity-ELISA



Immobilized Biotinylated Human LAG-3, Fc,Avitag (Cat. No. LA3-H82Fb) at 1 µg/mL (100 µL/well) on Streptavidin (Cat. No. STN-N5116) precoated (0.5 µg/well) plate, can bind Cynomolgus / Rhesus macaque FGL1, Mouse IgG2a Fc Tag (Cat. No. FG1-C5250) with a linear range of 0.019-0.625 µg/mL (QC tested).

Background

Fibrinogen-like protein 1(FGL1) is also known as HP-041, Hepassocin, HFREP-1, LFIRE-1. The protective effect of fibrinogen-like protein 1 (FGL1) in liver injury has previously been reported. However, studies have shown that FGL1 may be a predictor of GC patients and a target for GC therapy. Immunocytochemical studies revealed that fgl1 selectively binds to defective spermatozoa in the cauda epididymidis. Northern blot analysis and in situ hybridization demonstrated the high expression of fgl1 in the principal cells of the proximal cauda epididymidis. Immunofluorescence analysis using mouse fibrotic lung tissues suggested that fibrotic regions showed increased expressions of Gtse1 and Fgl1, Gtse1 and Fgl1 are suggested to be novel targets for radiation-induced lung fibrosis.

Discounts, Gifts,
and more!



Acro



www.acrobiosystems.com