

Human FGL2 (204-439) Protein, His Tag (MALS verified)

Catalog # FG2-H5243



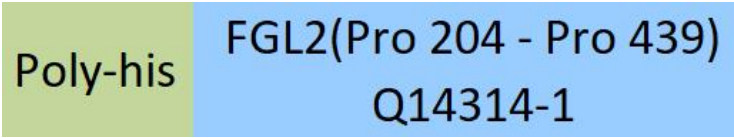
Synonym

FGL2,Fibroleukin,Pt49

Source

Human FGL2 (204-439) Protein, His Tag(FG2-H5243) is expressed from human 293 cells (HEK293). It contains AA Pro 204 - Pro 439 (Accession # [Q14314-1](#)).

Molecular Characterization



This protein carries a polyhistidine tag at the N-terminus.

The protein has a calculated MW of 29.6 kDa. The protein migrates as 36-41 kDa under reducing (R) condition (SDS-PAGE) due to glycosylation.

Endotoxin

Less than 1.0 EU per µg by the LAL method / rFC method.

Purity

>90% as determined by SDS-PAGE.

Formulation

Lyophilized from 0.22 µm filtered solution in PBS, pH7.4 with trehalose as protectant.

Contact us for customized product form or formulation.

Reconstitution

Please see Certificate of Analysis for specific instructions.

*For best performance, we strongly recommend you to follow the reconstitution protocol provided in the CoA.*

Storage

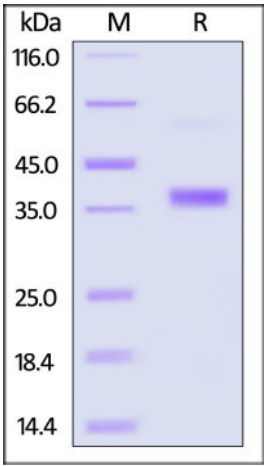
For long term storage, the product should be stored at lyophilized state at -20°C or lower.

*Please avoid repeated freeze-thaw cycles.*

This product is stable after storage at:

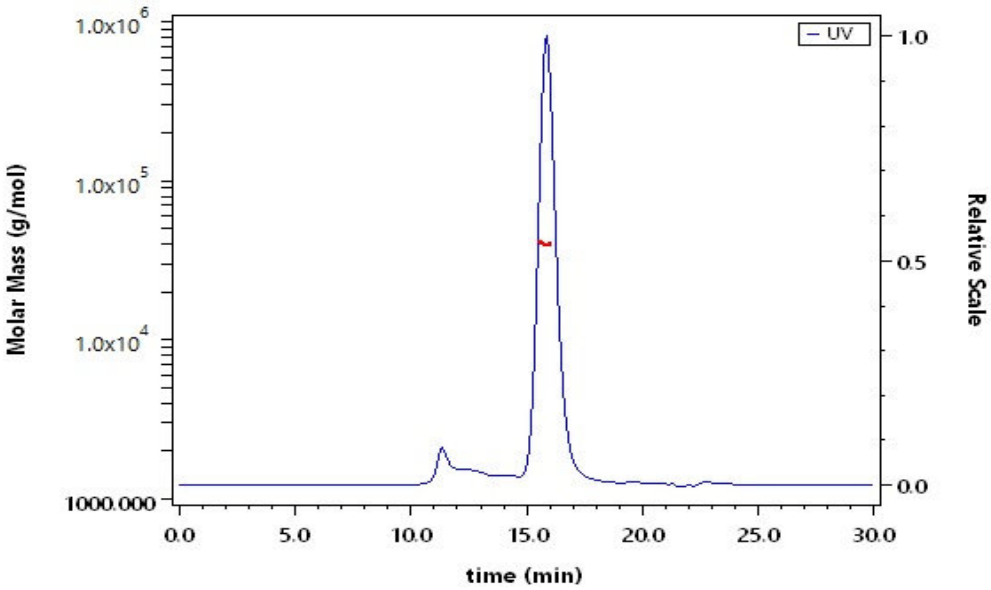
- 20°C to -70°C for 12 months in lyophilized state;
- 70°C for 3 months under sterile conditions after reconstitution.

SDS-PAGE



Human FGL2 (204-439) Protein, His Tag on SDS-PAGE under reducing (R) condition. The gel was stained with Coomassie Blue. The purity of the protein is greater than 90%.

SEC-MALS



The purity of Human FGL2 (204-439) Protein, His Tag (Cat. No. FG2-H5243) is more than 85% and the molecular weight of this protein is around 35-45 kDa verified by SEC-MALS.

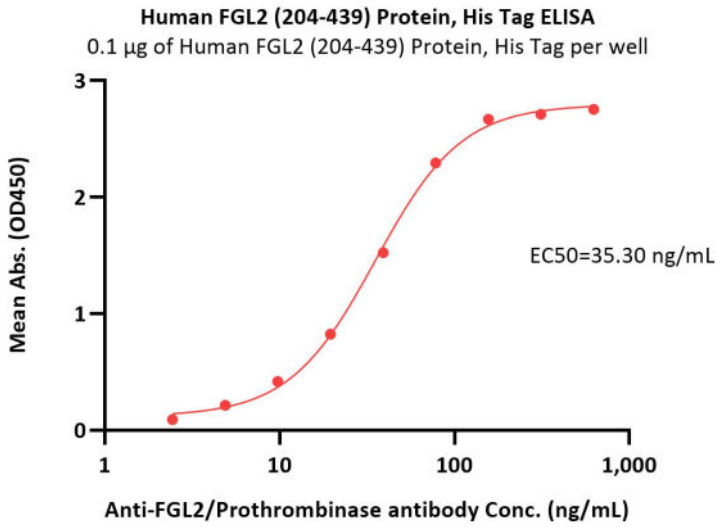
[Report](#)

Bioactivity-ELISA



Human FGL2 (204-439) Protein, His Tag (MALS verified)

Catalog # FG2-H5243



Immobilized Human FGL2 (204-439) Protein, His Tag (Cat. No. FG2-H5243) at 1 µg/mL (100 µL/well) can bind Anti-FGL2/Prothrombinase antibody with a linear range of 2-78 ng/mL (QC tested).

Background

Fibrinogen-like protein 2, also know as FGL2 is a protein that exhibits pleiotropic effects within the body and is an important immune regulator of both innate and adaptive responses.[7] The protein exists as both a Type II transmembrane protein (with the carboxy terminus on the extracellular side of the plasma membrane) found on the surface of macrophages and endothelial cells and can be constitutively secreted by both CD4+ and CD8+ T cells.

