

Synonym

FKBP1A,FKBP1,Calstabin-1,FKBP12,Rotamase,PKC12,PPIASE

Source

Human FKBP12, His Tag(FKA-H5122) is expressed from E. coli cells. It contains AA Met 1 - Glu 108 (Accession # [P62942-1](#)).

Predicted N-terminus: Met 1

Molecular Characterization



This protein carries a polyhistidine tag at the C-terminus.

The protein has a calculated MW of 12.8 kDa. The protein migrates as 13 kDa when calibrated against [Star Ribbon Pre-stained Protein Marker](#) under reducing (R) condition (SDS-PAGE).

Endotoxin

Less than 1.0 EU per µg by the LAL method / rFC method.

Purity

>95% as determined by SDS-PAGE.

Formulation

Lyophilized from 0.22 µm filtered solution in 50 mM HEPES, 150 mM NaCl, pH7.5 with trehalose as protectant.

Contact us for customized product form or formulation.

Reconstitution

Please see Certificate of Analysis for specific instructions.

For best performance, we strongly recommend you to follow the reconstitution protocol provided in the CoA.

Storage

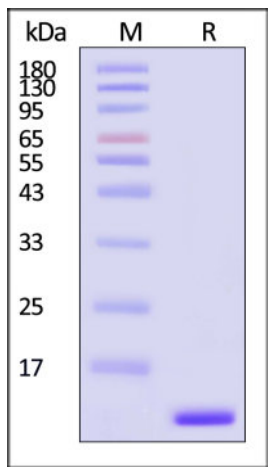
For long term storage, the product should be stored at lyophilized state at -20°C or lower.

Please avoid repeated freeze-thaw cycles.

This product is stable after storage at:

- -20°C to -70°C for 12 months in lyophilized state;
- -70°C for 3 months under sterile conditions after reconstitution.

SDS-PAGE



Human FKBP12, His Tag on SDS-PAGE under reducing (R) condition. The gel was stained with Coomassie Blue. The purity of the protein is greater than 95% (With [Star Ribbon Pre-stained Protein Marker](#)).

Background

Peptidyl-prolyl cis-trans isomerase FKBP1A, a member of the FKBP-type PPIase family and FKBP1 subfamily, is also known as FK506-binding protein 1A, immunophilin FKBP12 and 12 kDa FK506-binding protein, which contains one PPIase FKBP-type domain. FKBP1A is a cis-trans prolyl isomerase that binds the immunosuppressants FK506 (tacrolimus) and rapamycin (sirolimus).FKBP1A interacts with several intracellular signal transduction proteins including type I TGF-beta receptor. FKBP1A can also interact with multiple intracellular calcium release channels including the tetrameric skeletal muscle ryanodine receptor.

Discounts, Gifts,
and more!



Human FKBP12 / FKBP1A Protein, His Tag

Catalog # FKA-H5122



Furthermore, FKBP1A can recruit SMAD7 to ACVR1B which prevents the association of SMAD2 and SMAD3 with the activin receptor complex, thereby blocking the activin signal.

Discounts, Gifts,
and more!

