

Human Frizzled-10 / FZD10 Protein, His Tag (MALS verified)

Catalog # FRD-H52H3



Synonym

Fz-10, FZD10, hFz10, FzE7, CD350

Source

Human Frizzled-10, His Tag (FRD-H52H3) is expressed from human 293 cells (HEK293). It contains AA Ile 21 - Gly 161 (Accession # [Q9ULW2-1](#)).

Predicted N-terminus: Ile 21

Molecular Characterization

FZD10(Ile 21 - Gly 161)
Q9ULW2-1

Poly-his

Other Tags and Version Biotin & Other Labeled Version

This protein carries a polyhistidine tag at the C-terminus.
The protein has a calculated MW of 18.0 kDa. The protein migrates as 22-25 kDa under reducing (R) condition (SDS-PAGE) due to glycosylation.

Endotoxin

Less than 1.0 EU per µg by the LAL method / rFC method.

Purity

>90% as determined by SDS-PAGE.
>90% as determined by SEC-MALS.

Formulation

Lyophilized from 0.22 µm filtered solution in PBS, pH7.4 with trehalose as protectant.
Contact us for customized product form or formulation.

Reconstitution

Please see Certificate of Analysis for specific instructions.
For best performance, we strongly recommend you to follow the reconstitution protocol provided in the CoA.

Storage

For long term storage, the product should be stored at lyophilized state at -20°C or lower.
Please avoid repeated freeze-thaw cycles.

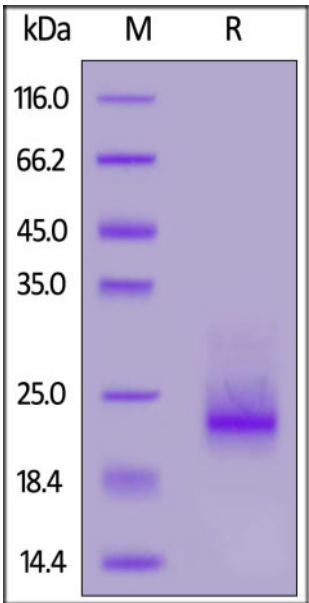
This product is stable after storage at:

- 20°C to -70°C for 12 months in lyophilized state;
- 70°C for 3 months under sterile conditions after reconstitution.

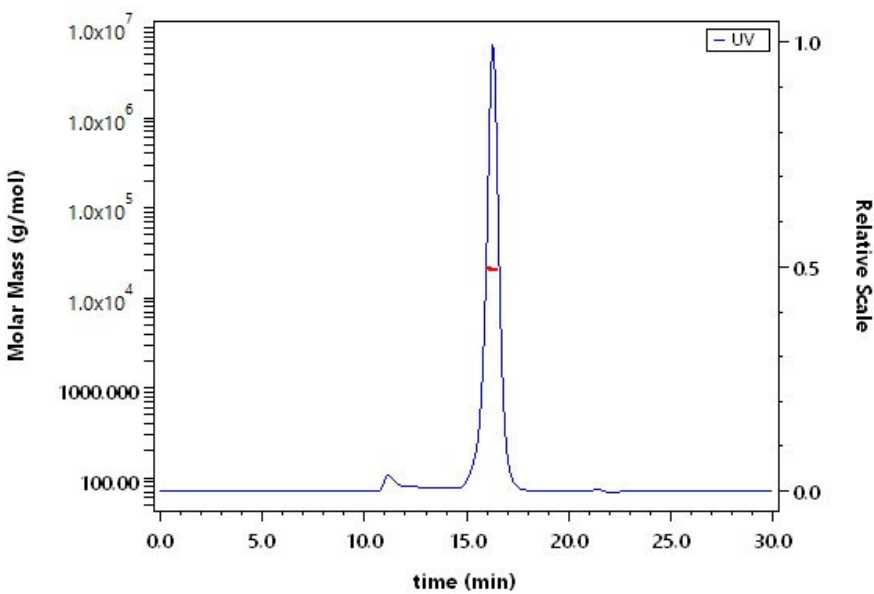
ACRO Quality Management System

- [QMS\(ISO, GMP\)](#)
- [Quality Advantages](#)
- [Quality Control Process](#)

SDS-PAGE



SEC-MALS



Human Frizzled-10, His Tag on SDS-PAGE under reducing (R) condition. The gel was stained with Coomassie Blue. The purity of the protein is greater than 90%. The purity of Human Frizzled-10, His Tag (Cat. No. FRD-H52H3) is more than 90% and the molecular weight of this protein is around 18-25 kDa verified by

Background

Frizzled-10 (FZD10) is also known as FzE7 or CD350, which belongs to the G-protein coupled receptor Fz/Smo family. Most of frizzled receptors are coupled to the beta-catenin canonical signaling pathway, which leads to the activation of disheveled proteins, inhibition of GSK-3 kinase, nuclear accumulation of beta-catenin and activation of Wnt target genes. FZD10 contains one FZ (frizzled) domain. FZD10 protein is a cell surface receptor, which is activated by Wnt proteins and involved in the regulation of cellular function. FZD10 interacts with WNT7B and MYOC.

Discounts, Gifts,
and more!



www.acrobiosystems.com