

Synonym

FSTL1,FRP,FSL1

Source

Human Follistatin-like 1, His Tag(FS1-H5227) is expressed from human 293 cells (HEK293). It contains AA Glu 21 - Ile 308 (Accession # [AAH00055](#)).

Predicted N-terminus: Glu 21

Molecular Characterization

FSTL1(Glu 21 - Ile 308)
AAH00055

Poly-his

This protein carries a polyhistidine tag at the C-terminus.

The protein has a calculated MW of 33.8 kDa. The protein migrates as 40-55 kDa under reducing (R) condition (SDS-PAGE) due to different glycosylation.

Endotoxin

Less than 1.0 EU per µg by the LAL method / rFC method.

Purity

>95% as determined by SDS-PAGE.

Formulation

Lyophilized from 0.22 µm filtered solution in PBS, pH7.4 with trehalose as protectant.

Contact us for customized product form or formulation.

Reconstitution

Please see Certificate of Analysis for specific instructions.

For best performance, we strongly recommend you to follow the reconstitution protocol provided in the CoA.

Storage

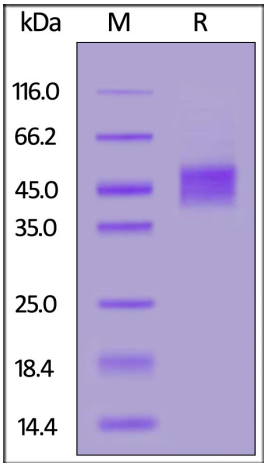
For long term storage, the product should be stored at lyophilized state at -20°C or lower.

Please avoid repeated freeze-thaw cycles.

This product is stable after storage at:

- 20°C to -70°C for 12 months in lyophilized state;
- 70°C for 3 months under sterile conditions after reconstitution.

SDS-PAGE



Human Follistatin-like 1, His Tag on SDS-PAGE under reducing (R) condition.

The gel was stained with Coomassie Blue. The purity of the protein is greater than 95%.

Background

Follistatin-related protein 1 (FSTL1) is also known as Follistatin-like protein 1 (FRP). FSTL1 is a secreted protein that contains two EF-hand domains, one follistatin-like domain, one Kazal-like domain and one VWFC domain. FSTL1 is overexpressed in synovial tissues from rheumatoid arthritis. Follistatin-like protein 1 / FSTL1 may modulate the action of some growth factors on cell proliferation and differentiation. FSTL1 binds heparin.

