

Synonym

FZD5, Frizzled-5, C2orf31, , Fz-5, hFz5, FzE5

Source

Human Frizzled-5, Fc Tag (FZ5-H5259) is expressed from human 293 cells (HEK293). It contains AA Ala 27 - Pro 167 (Accession # [Q13467](#)).  
Predicted N-terminus: Ala 27

Molecular Characterization

Frizzled-5(Ala 27 - Pro 167) Q13467	Fc(Pro 100 - Lys 330) P01857
--	---------------------------------

[Other Tags and Version](#) [Biotin & Other Labeled Version](#)

This protein carries a human IgG1 Fc tag at the C-terminus.  
The protein has a calculated MW of 42.6 kDa. The protein migrates as 50-60 kDa under reducing (R) condition (SDS-PAGE) due to glycosylation.

Endotoxin

Less than 1.0 EU per µg by the LAL method / rFC method.

Purity

>95% as determined by SDS-PAGE.

Formulation

Lyophilized from 0.22 µm filtered solution in PBS, pH7.4 with trehalose as protectant.  
Contact us for customized product form or formulation.

Reconstitution

Please see Certificate of Analysis for specific instructions.  
**For best performance, we strongly recommend you to follow the reconstitution protocol provided in the CoA.**

Storage

For long term storage, the product should be stored at lyophilized state at -20°C or lower.

**Please avoid repeated freeze-thaw cycles.**

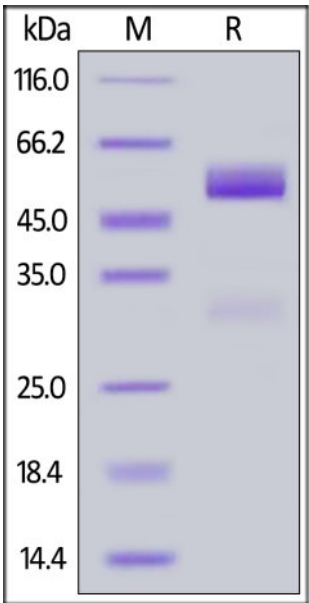
This product is stable after storage at:

- -20°C to -70°C for 12 months in lyophilized state;
- -70°C for 3 months under sterile conditions after reconstitution.

ACRO Quality Management System

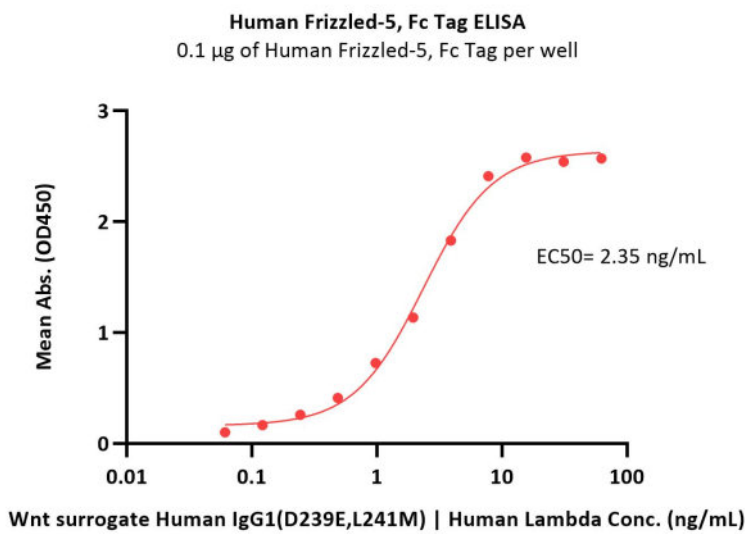
- [QMS\(ISO, GMP\)](#).
- [Quality Advantages](#)
- [Quality Control Process](#)

SDS-PAGE



Human Frizzled-5, Fc Tag on SDS-PAGE under reducing (R) condition. The gel was stained with Coomassie Blue. The purity of the protein is greater than 95%.

# Bioactivity-ELISA



Immobilized Human Frizzled-5, Fc Tag (Cat. No. FZ5-H5259) at 1 µg/mL (100 µL/well) can bind Wnt surrogate Human IgG1(D239E,L241M) | Human Lambda with a linear range of 0.1-8 ng/mL (QC tested).

## Background

Frizzled-5 (FZD5) is also known as FzE5, which belongs to the G-protein coupled receptor Fz/Smo family. Most of frizzled receptors are coupled to the beta-catenin canonical signaling pathway, which leads to the activation of disheveled proteins, inhibition of GSK-3 kinase, nuclear accumulation of beta-catenin and activation of Wnt target genes. FZD5 contains one FZ (frizzled) domain. FZD5 may be involved in transduction and intercellular transmission of polarity information during tissue morphogenesis and/or in differentiated tissues. FZD5 interacts specifically with Wnt5A to induce the beta-catenin pathway. FZD5 interacts with GOPC.

Discounts, Gifts,  
and more!



[www.acrobiosystems.com](http://www.acrobiosystems.com)