

Mouse Glypican 2 / GPC2 Protein, His Tag

Catalog # GP2-M52H5



Synonym

Glypican 2, GPC2

Source

Mouse Glypican 2, His Tag(GP2-M52H5) is expressed from human 293 cells (HEK293). It contains AA His 22 - Ser 556 (Accession # [Q8BKV1-1](#)).
Predicted N-terminus: His 22

Molecular Characterization

Glypican 2(His 22 - Ser 556)
Q8BKV1-1

Poly-his

This protein carries a polyhistidine tag at the C-terminus.
The protein has a calculated MW of 60.6 kDa. The protein migrates as 60-106 kDa under non-reducing (NR) condition (SDS-PAGE) due to glycosylation.

Endotoxin

Less than 1.0 EU per µg by the LAL method / rFC method.

Purity

>90% as determined by SDS-PAGE.

Formulation

Lyophilized from 0.22 µm filtered solution in PBS, pH7.4 with trehalose as protectant.

Contact us for customized product form or formulation.

Reconstitution

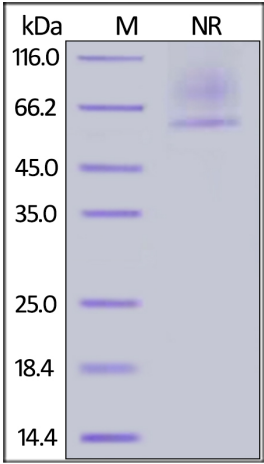
Please see Certificate of Analysis for specific instructions.
For best performance, we strongly recommend you to follow the reconstitution protocol provided in the CoA.

Storage

For long term storage, the product should be stored at lyophilized state at -20°C or lower.
Please avoid repeated freeze-thaw cycles.

- This product is stable after storage at:
- 20°C to -70°C for 12 months in lyophilized state;
 - 70°C for 3 months under sterile conditions after reconstitution.

SDS-PAGE



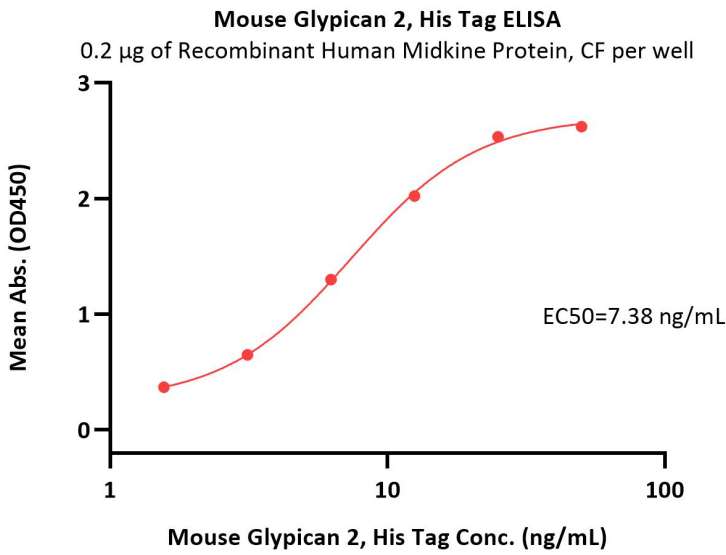
Mouse Glypican 2, His Tag on SDS-PAGE under non-reducing (NR) condition. The gel was stained with Coomassie Blue. The purity of the protein is greater than 90%.

Bioactivity-ELISA



Mouse Glypican 2 / GPC2 Protein, His Tag

Catalog # GP2-M52H5



Immobilized Recombinant Human Midkine Protein, CF at 2 µg/mL (100 µL/well) can bind Mouse Glypican 2, His Tag (Cat. No. GP2-M52H5) with a linear range of 2-13 ng/mL (QC tested).

Background

Glypican 2 (GPC2), also known cerebroglycan, is a glycoposphatidylinositol-linked integral membrane heparan sulfate proteoglycan found in the developing nervous system. Cerebroglycan participates in cell adhesion and is thought to regulate the growth and guidance of axons. Cerebroglycan has especially high affinity for laminin-1. GPC2 silencing inactivates Wnt/β-catenin signaling and reduces the expression of N-Myc, an oncogenic driver of neuroblastoma tumorigenesis. Immunotoxins and chimeric antigen receptor (CAR) T cells targeting GPC2 inhibit neuroblastoma growth in mouse models. A GPC3 specific antibody drug conjugate (ADC) can also inhibit neuroblastoma cell proliferation.

