

Synonym

GPC3, OCI5, Glypican-3, GTR2-2, MXR7, DGSX, SDYS , SGB, SGBS, SGBS1

Source

Cynomolgus Glypican 3, Fc Tag(GP3-C5256) is expressed from human 293 cells (HEK293). It contains AA Gln 25 - Arg 358 & Ser 359 - His 559 (Accession # [XP\\_005594665.1](#)).  
Predicted N-terminus: Gln 25 & Ser 359

Molecular Characterization

Glypican 3(Gln 25 - His 559) XP_005594665.1	Fc(Pro 100 - Lys 330) P01857
--	---------------------------------

This protein carries a human IgG1 Fc tag at the C-terminus.  
The protein has a calculated MW of 38.1 kDa & 49.4 kDa. The protein migrates as 40 kDa, 60 kDa and 100-120 kDa under reducing (R) condition (SDS-PAGE).

Endotoxin

Less than 1.0 EU per µg by the LAL method / rFC method.

Purity

>90% as determined by SDS-PAGE.

Formulation

Lyophilized from 0.22 µm filtered solution in Tris with Glycine, Arginine and NaCl, pH7.5 with trehalose as protectant.

Contact us for customized product form or formulation.

Reconstitution

Please see Certificate of Analysis for specific instructions.  
*For best performance, we strongly recommend you to follow the reconstitution protocol provided in the CoA.*

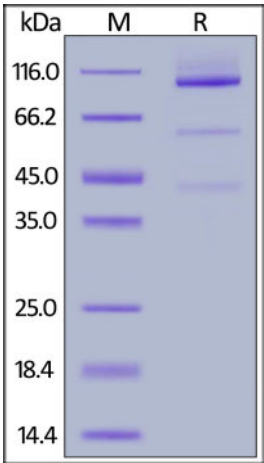
Storage

For long term storage, the product should be stored at lyophilized state at -20°C or lower.

*Please avoid repeated freeze-thaw cycles.*

- This product is stable after storage at:
- 20°C to -70°C for 12 months in lyophilized state;
  - 70°C for 3 months under sterile conditions after reconstitution.

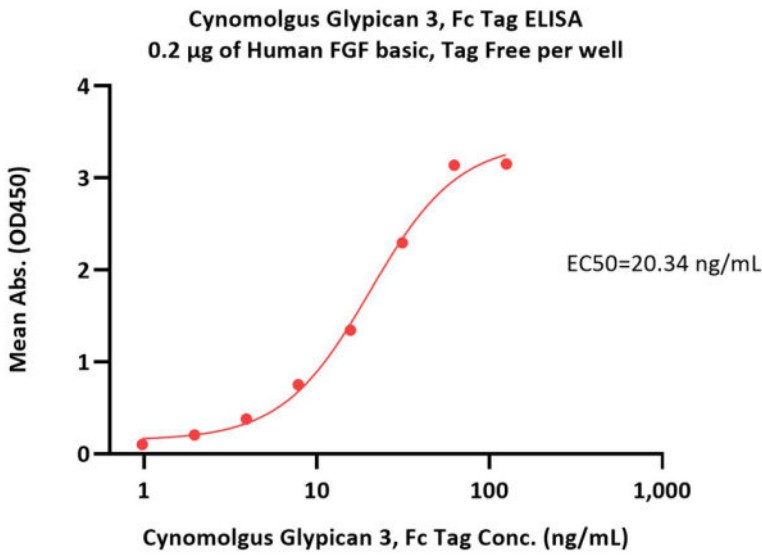
SDS-PAGE



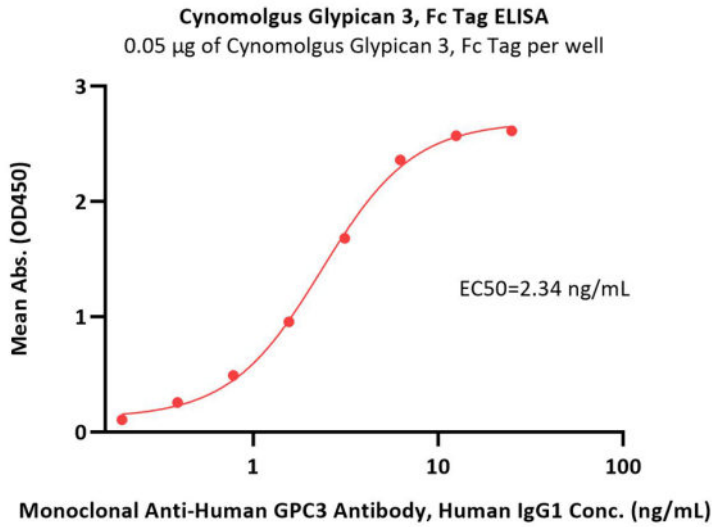
Cynomolgus Glypican 3, Fc Tag on SDS-PAGE under reducing (R) condition. The gel was stained with Coomassie Blue. The purity of the protein is greater than 90%.

Bioactivity-ELISA





Immobilized Human FGF basic, premium grade (Cat. No. BFF-H4117) at 2 µg/mL (100 µL/well) can bind Cynomolgus Glypican 3, Fc Tag (Cat. No. GP3-C5256) with a linear range of 1-31 ng/mL (QC tested).



Immobilized Cynomolgus Glypican 3, Fc Tag (Cat. No. GP3-C5256) at 0.5 µg/mL (100 µL/well) can bind Monoclonal Anti-Human GPC3 Antibody, Human IgG1 with a linear range of 0.2-3 ng/mL (Routinely tested).

Background

Glypican-3 (GPC3) is also known as Intestinal protein OCI-5, GTR2-2, MXR7, which belongs to the glypican family. Glypican 3 / GPC-3 is highly expressed in lung, liver and kidney. Glypican-3 inhibits the dipeptidyl peptidase activity of DPP4. Glypican-3 may be involved in the suppression/modulation of growth in the predominantly mesodermal tissues and organs, and also may play a role in the modulation of IGF2 interactions with its receptor and thereby modulate its function.

