

Synonym

GPC3,OCI5,Glypican-3,GTR2-2,MXR7,DGSX,SDYS ,SGB,SGBS,SGBS1

Source

Human Glypican 3 (S359F) Protein, His Tag(GP3-H5223) is expressed from human 293 cells (HEK293). It contains AA Gln 25 - His 559 (Accession # [P51654-1](#)(S359F)).  
Predicted N-terminus: Gln 25

Molecular Characterization



This protein carries a polyhistidine tag at the C-terminus.  
The protein has a calculated MW of 61.7 kDa. The protein migrates as 66-115 kDa under reducing (R) condition (SDS-PAGE) due to glycosylation.

Endotoxin

Less than 0.1 EU per µg by the LAL method / rFC method.

Purity

>90% as determined by SDS-PAGE.

Formulation

Lyophilized from 0.22 µm filtered solution in PBS, pH7.4 with trehalose as protectant.  
Contact us for customized product form or formulation.

Reconstitution

Please see Certificate of Analysis for specific instructions.  
*For best performance, we strongly recommend you to follow the reconstitution protocol provided in the CoA.*

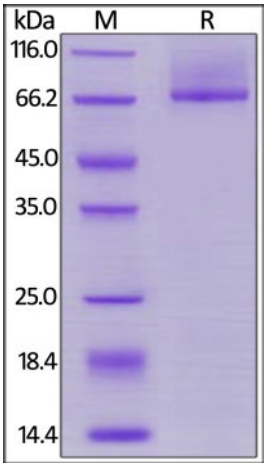
Storage

For long term storage, the product should be stored at lyophilized state at -20°C or lower.  
*Please avoid repeated freeze-thaw cycles.*

This product is stable after storage at:

- 20°C to -70°C for 12 months in lyophilized state;
- 70°C for 3 months under sterile conditions after reconstitution.

SDS-PAGE



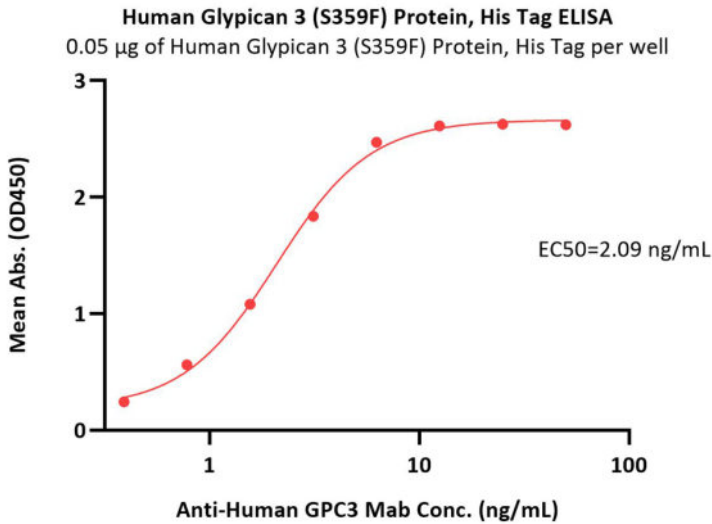
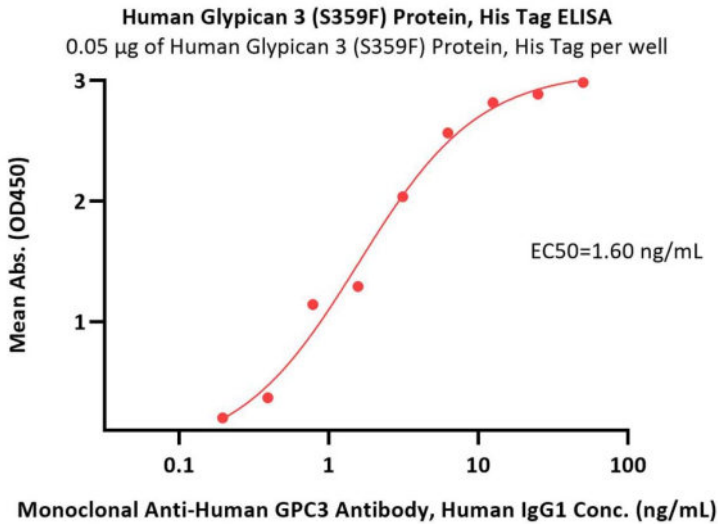
Human Glypican 3 (S359F) Protein, His Tag on SDS-PAGE under reducing (R) condition. The gel was stained with Coomassie Blue. The purity of the protein is greater than 90%.

Bioactivity-ELISA



Human Glypican 3 / GPC3 (S359F) Protein, His Tag

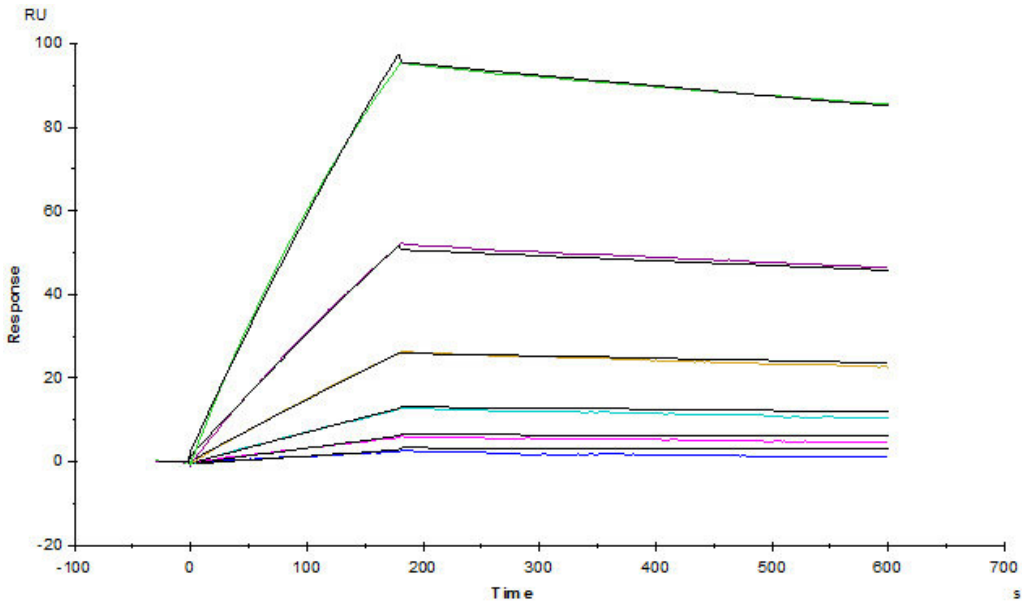
Catalog # GP3-H5223



Immobilized Human Glypican 3 (S359F) Protein, His Tag (Cat. No. GP3-H5223) at 0.5 µg/mL (100 µL/well) can bind Monoclonal Anti-Human GPC3 Antibody, Human IgG1 with a linear range of 0.1-2 ng/mL (QC tested).

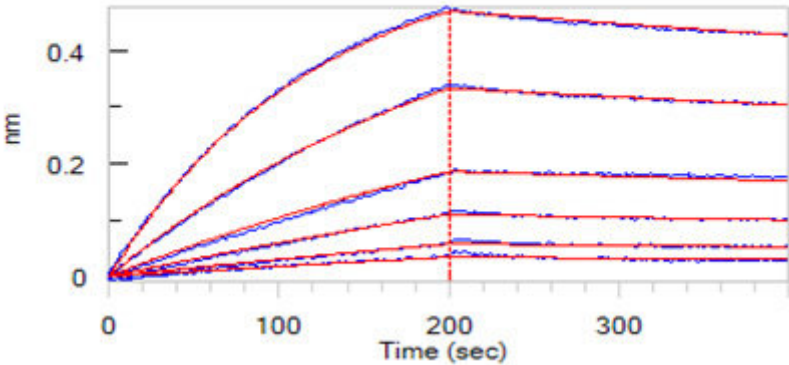
Immobilized Human Glypican 3 (S359F) Protein, His Tag (Cat. No. GP3-H5223) at 0.5 µg/mL (100 µL/well) can bind Anti-Human GPC3 Mab with a linear range of 0.4-3 ng/mL (Routinely tested).

Bioactivity-SPR



Anti-Human GPC3 MAb (chimeric mouse-human IgG1) captured on CM5 chip via anti-human IgG Fc antibodies surface, can bind Human Glypican 3 (S359F) Protein, His Tag (Cat. No. GP3-H5223) with an affinity constant of 1.96 nM as determined in a SPR assay (Biacore T200) (Routinely tested).

Bioactivity-BLI



Loaded Anti-Human GPC3 MAb (chimeric mouse-human IgG1) on AHC Biosensor, can bind Human Glypican 3 (S359F) Protein, His Tag (Cat. No.



Human Glypican 3 / GPC3 (S359F) Protein, His Tag

Catalog # GP3-H5223



GP3-H5223) with an affinity constant of 3.04 nM as determined in BLI assay (ForteBio Octet Red96e) (Routinely tested).

Background

Glypican-3 (GPC3) is also known as Intestinal protein OCI-5, GTR2-2, MXR7, which belongs to the glypican family. Glypican 3 / GPC-3 is highly expressed in lung, liver and kidney. Glypican-3 inhibits the dipeptidyl peptidase activity of DPP4. Glypican-3 may be involved in the suppression/modulation of growth in the predominantly mesodermal tissues and organs, and also may play a role in the modulation of IGF2 interactions with its receptor and thereby modulate its function.

