

Synonym

GPC3,OCI5,Glypican-3,GTR2-2,MXR7,DGSX,SDYS ,SGB,SGBS,SGBS1

Source

FITC-Labeled Human Glypican 3, Fc Tag (Cat. No. GP3-HF258) is expressed from human HEK293 cells. It contains AA Gln 25 - His 559 (Accession # [P51654-1](#)). It is the FITC labeled form of Human Glypican 3, Fc Tag (Cat. No. GP3-H5258).

Predicted N-terminus: Gln 25 & Ser 359

Molecular Characterization

Glypican 3(Gln 25 - His 559) P51654-1	Fc(Pro 100 - Lys 330) P01857
--	---------------------------------

This protein carries a human IgG1 Fc tag at the C-terminus.

The protein has a calculated MW of 38.1 kDa & 49.3 kDa. The protein migrates as 40 kDa, 60 kDa and 87-120 kDa when calibrated against [Star Ribbon Pre-stained Protein Marker](#) under reducing (R) condition (SDS-PAGE) due to glycosylation.

Conjugate

FITC

Excitation source: 488 nm spectral line, argon-ion laser

Excitation Wavelength: 488 nm

Emission Wavelength: 535 nm

Labeling

The primary amines in the side chains of lysine residues and the N-terminus of the protein are conjugated with FITC using standard chemical labeling method. The residual FITC is removed by molecular sieve treatment during purification process.

Protein Ratio

The FITC to protein molar ratio is 3-5.

Purity

>90% as determined by SDS-PAGE.

Formulation

Lyophilized from 0.22 µm filtered solution in PBS, pH7.4 with trehalose as protectant.

Contact us for customized product form or formulation.

Reconstitution

Please see Certificate of Analysis for specific instructions.

For best performance, we strongly recommend you to follow the reconstitution protocol provided in the CoA.

Storage

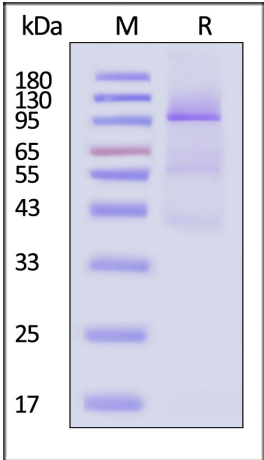
For long term storage, the product should be stored at lyophilized state at -20°C or lower.

Please protect from light and avoid repeated freeze-thaw cycles.

This product is stable after storage at:

- 20°C to -70°C for 12 months in lyophilized state;
- 70°C for 3 months under sterile conditions after reconstitution.

SDS-PAGE



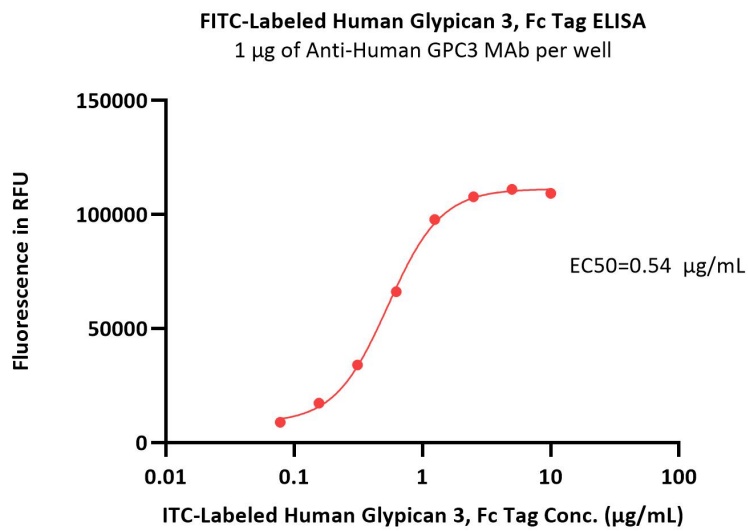
FITC-Labeled Human Glypican 3 / GPC3 Protein, Fc Tag

Catalog # GP3-HF258



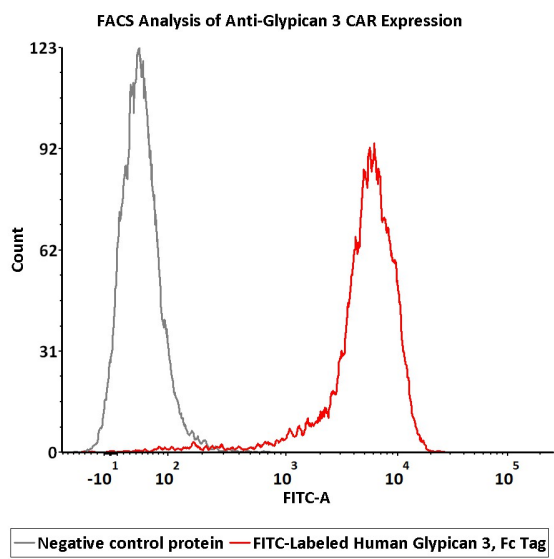
FITC-Labeled Human Glypican 3, Fc Tag on SDS-PAGE under reducing (R) condition. The gel was stained with Coomassie Blue. The purity of the protein is greater than 90% (With [Star Ribbon Pre-stained Protein Marker](#)).

Bioactivity-ELISA



Immobilized Anti-Human GPC3 MAb at 10 µg/mL (100 µL/well) can bind FITC-Labeled Human Glypican 3, Fc Tag (Cat. No. GP3-HF258) with a linear range of 0.078-1.25 µg/mL (Ex.488 nm/Em.535 nm) (QC tested).

Bioactivity-FACS



2e5 of Anti-Glypican 3 CAR-293 cells were stained with 100 µL of 3 µg/mL of FITC-Labeled Human Glypican 3, Fc Tag (Cat. No. GP3-HF258) and negative control protein respectively. FITC signal was used to evaluate the binding activity (QC tested).

Background

Glypican-3 (GPC3) is also known as Intestinal protein OCI-5, GTR2-2, MXR7, which belongs to the glypican family. Glypican 3 / GPC-3 is highly expressed in lung, liver and kidney. Glypican-3 inhibits the dipeptidyl peptidase activity of DPP4. Glypican-3 may be involved in the suppression/modulation of growth in the predominantly mesodermal tissues and organs, and also may play a role in the modulation of IGF2 interactions with its receptor and thereby modulate its function.

Discounts, Gifts,
and more!

