

Cynomolgus GPRC5D Protein, Flag,His Tag (Nanodisc)

Catalog # GPD-C82D4



Synonym

GPRC5D, G-protein coupled receptor family C group 5 member D

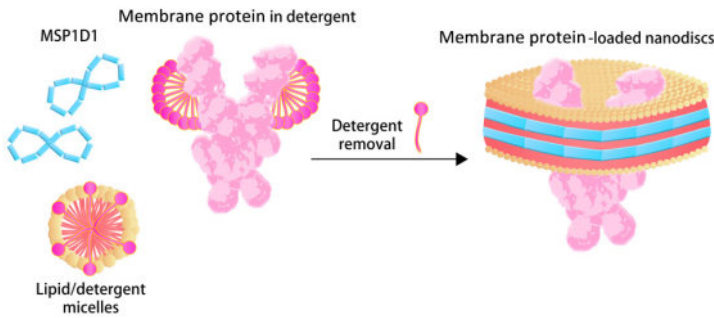
Source

Cynomolgus GPRC5D Protein, Flag,His Tag(GPD-C82D4) is expressed from human 293 cells (HEK293). It contains AA Tyr 2 - Phe 192 & Glu 197 - Leu 262 (Accession # [A0A2K5W6I7-1](#)).
Predicted N-terminus: Asp

Molecular Characterization



This protein carries a Flag tag at the N-terminus and a polyhistidine tag at the C-terminus. The protein has a calculated MW of 51.9 kDa. The protein migrates as 37 kDa under reducing (R) condition (SDS-PAGE).
Nanodiscs are a new class of model membranes that are being used to solubilize and study a range of integral membrane proteins and membrane-associated proteins. The Nanodisc bilayer is bounded by an amphipathic scaffold coat that confers enhanced stability and a narrow particle size distribution.



The nanodisc assembles from a mixture of full length membrane protein in detergent, phospholipid micelles and membrane scaffold protein upon removal of the detergent.

Endotoxin

Less than 1.0 EU per µg by the LAL method / rFC method.
*The isotype control of empty/mock nanodisc (Cat. No. [APO-H51H3](#)) is sold separately and not included in protein, you can follow [this link](#) for product information.

Purity

>80% as determined by SDS-PAGE.

Formulation

Supplied as 0.2 µm filtered solution in 50 mM HEPES, 150 mM NaCl, pH7.5 with glycerol as protectant.
Contact us for customized product form or formulation.

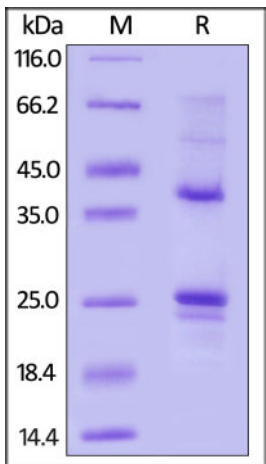
Shipping

This product is supplied and shipped with dry ice, please inquire the shipping cost.

Storage

Please avoid repeated freeze-thaw cycles.
This product is stable after storage at:
• The product MUST be stored at -70°C or lower upon receipt;
• -70°C for 3 months under sterile conditions.

SDS-PAGE



Discounts, Gifts,
and more!



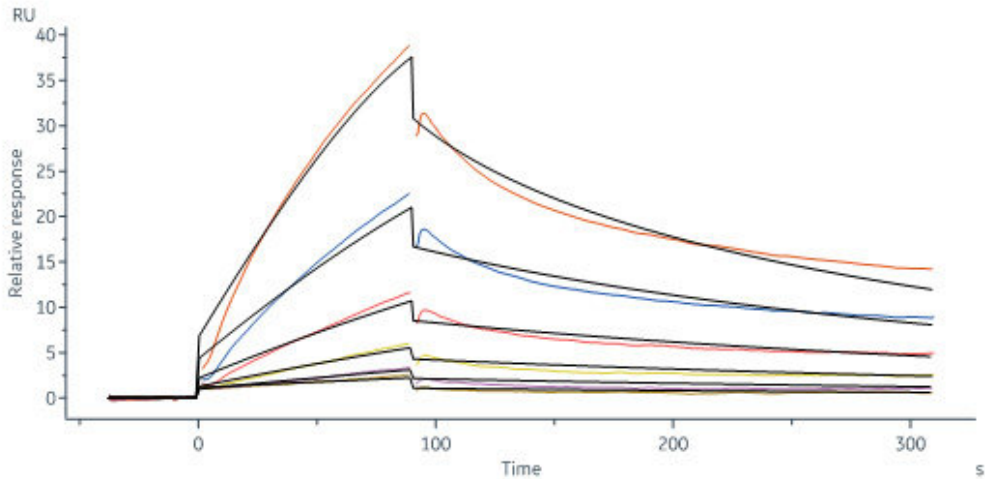
Cynomolgus GPRC5D Protein, Flag,His Tag (Nanodisc)

Catalog # GPD-C82D4



Cynomolgus GPRC5D Protein, Flag,His Tag on SDS-PAGE under reducing (R) condition. The gel was stained with Coomassie Blue. The purity of the protein is greater than 80%.

Bioactivity-SPR



Anti-GPRC5D antibody immobilized on CM5 Chip can bind Cynomolgus GPRC5D Protein, Flag,His Tag (Cat. No. GPD-C82D4) with an affinity constant of 0.134 μ M as determined in a SPR assay (Biacore 8K) (QC tested).

Background

G-protein coupled receptor family C group 5 member D (GPRC5D) is a retinoic acid-inducible 40 kDa protein with seven transmembrane segments and a short N terminal extracellular region. Widely expressed in the peripheral system. Expression pattern is high in pancreas, medium in kidney, small intestine, spleen and testis, low in lung, colon, leukocyte, prostate and thymus and not detectable in brain, heart, liver, placenta, skeletal muscle and ovary.

Discounts, Gifts,
and more!

