

Synonym

SerpinD1,HCF2,HLS2,HC-II

Source

Human Serpin D1, His Tag(HC2-H5224) is expressed from human 293 cells (HEK293). It contains AA Gly 20 - Ser 499 (Accession # [AAH35028](#)).
Predicted N-terminus: Gly 20

Molecular Characterization

Serpin D1(Gly 20 - Ser 499)
AAH35028

Poly-his

This protein carries a polyhistidine tag at the C-terminus.
The protein has a calculated MW of 55.7 kDa. The protein migrates as 66-80 kDa under reducing (R) condition (SDS-PAGE) due to glycosylation.

Endotoxin

Less than 1.0 EU per µg by the LAL method / rFC method.

Purity

>95% as determined by SDS-PAGE.

Formulation

Lyophilized from 0.22 µm filtered solution in 50 mM Tris, 150 mM NaCl, pH7.5 with trehalose as protectant.

Contact us for customized product form or formulation.

Reconstitution

Please see Certificate of Analysis for specific instructions.

For best performance, we strongly recommend you to follow the reconstitution protocol provided in the CoA.

Storage

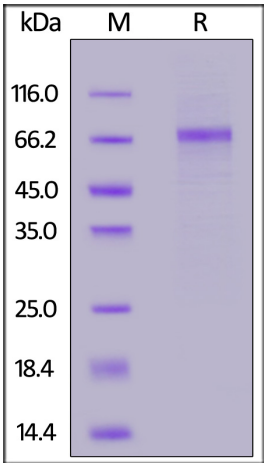
For long term storage, the product should be stored at lyophilized state at -20°C or lower.

Please avoid repeated freeze-thaw cycles.

This product is stable after storage at:

- 20°C to -70°C for 12 months in lyophilized state;
- 70°C for 3 months under sterile conditions after reconstitution.

SDS-PAGE



Human Serpin D1, His Tag on SDS-PAGE under reducing (R) condition. The gel was stained with Coomassie Blue. The purity of the protein is greater than 95%.

Background

Serpin D1 is also known as Heparin cofactor 2 (HCF2), Protease inhibitor leuserpin-2 (HLS2), Heparin cofactor II (HC-II), which belongs to the serpin family. HCF2 is expressed predominantly in liver. Thrombin inhibitor activated by the glycosaminoglycans, heparin or dermatan sulfate. In the presence of the latter, SerpinD1 / HC-II becomes the predominant thrombin inhibitor in place of antithrombin III (AT-III). In a glycosaminoglycan-independent manner, serpinD1 / HC-II also inhibits chymotrypsin. Peptides at the N-terminal of HC-II have chemotactic activity for both monocytes and neutrophils.

Discounts, Gifts,
and more!



Human Serpin D1 / Heparin Cofactor II Protein, His Tag

Catalog # HC2-H5224

