



Background

Recombinant Monoclonal Anti-Ki-67 Antibody, Rabbit (7A4) is a Ki-67 primary antibody for IHC application. Required to maintain individual mitotic chromosomes dispersed in the cytoplasm following nuclear envelope disassembly . Associates with the surface of the mitotic chromosome, the perichromosomal layer, and covers a substantial fraction of the chromosome surface. Prevents chromosomes from collapsing into a single chromatin mass by forming a steric and electrostatic charge barrier: the protein has a high net electrical charge and acts as a surfactant, dispersing chromosomes and enabling independent chromosome motility.

Key parameter

Host Species	Rabbit
Isotype	IgG
Clone	7A4
Application	IHC
Property	1: 500
State	Liquid
Positive Control	Human Tonsil Tissues
Clonality	Monoclonal
Research Field	Cancer Drug Targets
Source	Rabbit
Synonym	PPP1R105, MIB-1, ki-67

Experiment Protocol

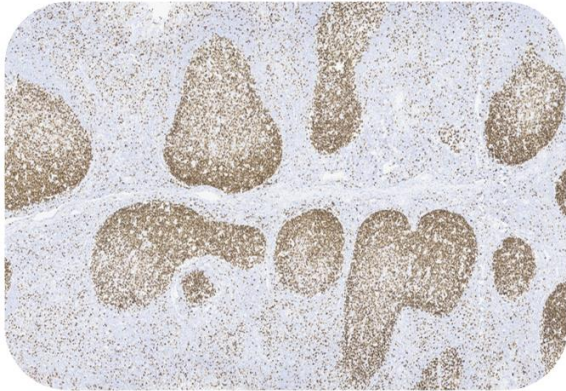
LEICA Experiment Protocol(Manual)

Storage

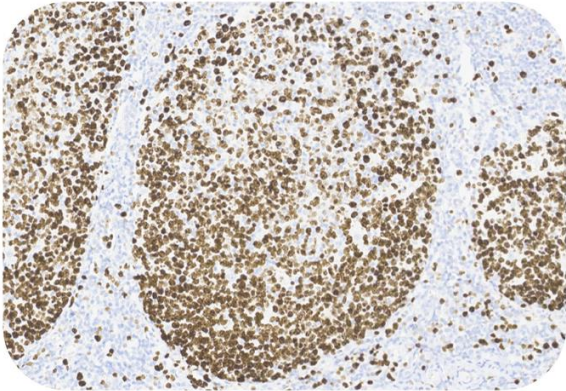
Shipped at 4°C. Store at +4°C short term (1-2 weeks). Upon delivery aliquot. Store at -20°C long term. Avoid freeze / thaw cycle. The shelf life is 30 days from the date of opening.

Typical Data

Control Sample



Immunohistochemistry (Formalin/PFA-fixed paraffin-embedded sections) -Recombinant Monoclonal Anti-Ki-67 Antibody, Rabbit (7A4) (HGS-S239)
Human Tonsil Tissue, 4X



Immunohistochemistry (Formalin/PFA-fixed paraffin-embedded sections) -Recombinant Monoclonal Anti-Ki-67 Antibody, Rabbit (7A4) (HGS-S239)
Human Tonsil Tissue, 20X

Discounts, Gifts,
and more!



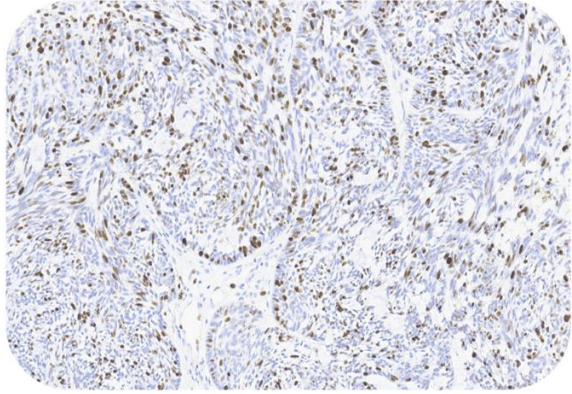
Recombinant Monoclonal Anti-Ki-67 Antibody, Rabbit (7A4)

Catalog # HGS-S239

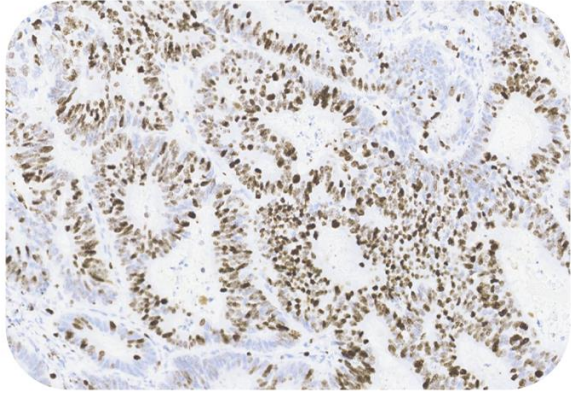


Immunohistochemical analysis of paraffin embedded Human tonsil tissue labelled with HGS-S239 at 1/500 dilution.
Perform heat mediated antigen retrieval with Tris/EDTA buffer pH 9.0 before commencing with IHC staining protocol.

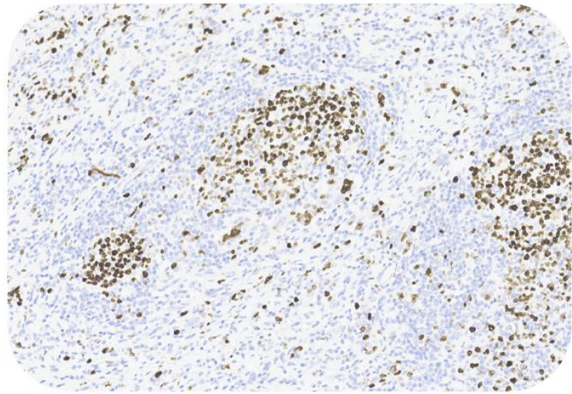
Cancer Sample



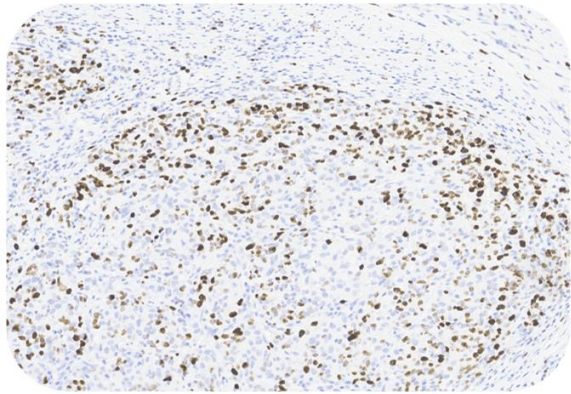
Immunohistochemistry (Formalin/PFA-fixed paraffin-embedded sections) -Recombinant Monoclonal Anti-Ki-67 Antibody, Rabbit (7A4) (HGS-S239)
Human Skin Cancer, 20X



Immunohistochemistry (Formalin/PFA-fixed paraffin-embedded sections) -Recombinant Monoclonal Anti-Ki-67 Antibody, Rabbit (7A4) (HGS-S239)
Human Colorectal Cancer, 20X



Immunohistochemistry (Formalin/PFA-fixed paraffin-embedded sections) -Recombinant Monoclonal Anti-Ki-67 Antibody, Rabbit (7A4) (HGS-S239)
Human Gastric Cancer, 20X



Immunohistochemistry (Formalin/PFA-fixed paraffin-embedded sections) -Recombinant Monoclonal Anti-Ki-67 Antibody, Rabbit (7A4) (HGS-S239)
Human Gastric Cancer, 20X

Immunohistochemical analysis of paraffin embedded human cancer tissue labelled with HGS-S239 at 1/500 dilution.
Perform heat mediated antigen retrieval with Tris/EDTA buffer pH 9.0 before commencing with IHC staining protocol.

