

Background

Recombinant Monoclonal Anti-CD20 Antibody, Mouse (6C8) is a CD20 primary antibody for IHC application. CD20 is expressed on the surface of B cells at all stages of development and differentiation except plasma cells (B cells secreting immunoglobulin). It directly acts on B cells by regulating transmembrane calcium ion flow and plays an important regulatory role in the proliferation and differentiation of B cells.

Key parameter

Host Species	Mouse
Isotype	IgG
Clone	6C8
Application	IHC
Property	1: 500
State	Liquid
Positive Control	Human Tonsil Tissues
Clonality	Monoclonal
Research Field	Cancer Drug Targets
Source	Mouse
Synonym	CD20

Experiment Protocol

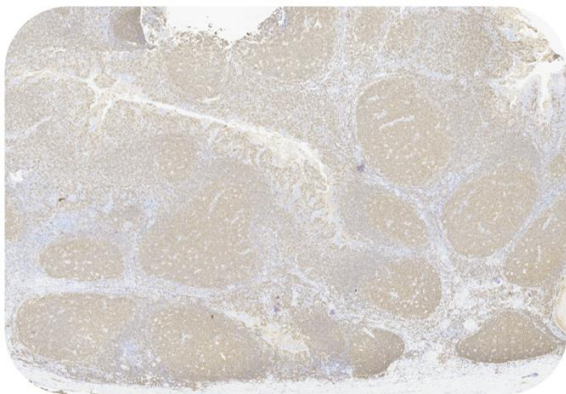
LEICA Experiment Protocol(Manual)

Storage

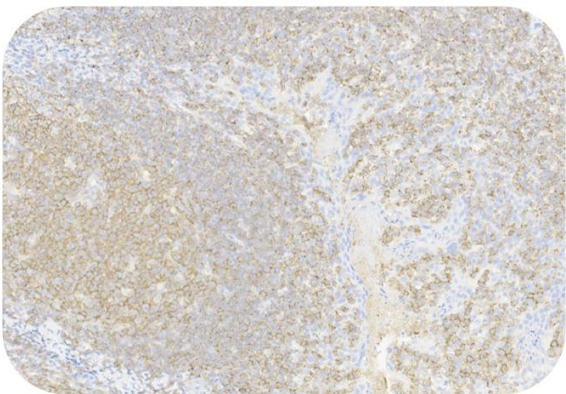
Shipped at 4°C. Store at +4°C short term (1-2 weeks). Upon delivery aliquot. Store at -20°C long term. Avoid freeze / thaw cycle. The shelf life is 30 days from the date of opening.

Typical Data

Control Sample



Immunohistochemistry (Formalin/PFA-fixed paraffin-embedded sections) -Recombinant Monoclonal Anti-CD20 Antibody, Mouse (6C8) (HGS-S241)
Human Tonsil Tissue, 4X



Immunohistochemistry (Formalin/PFA-fixed paraffin-embedded sections) -Recombinant Monoclonal Anti-CD20 Antibody, Mouse (6C8) (HGS-S241)
Human Tonsil Tissue, 20X

Immunohistochemical analysis of paraffin embedded Human tonsil tissue labelled with HGS-S241 at 1/500 dilution.

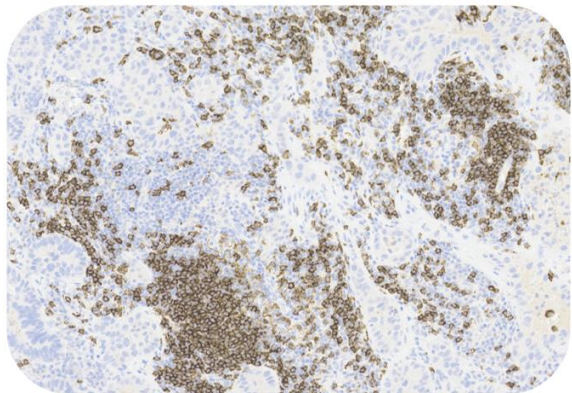
Perform heat mediated antigen retrieval with Tris/EDTA buffer pH 9.0 before commencing with IHC staining protocol.

Cancer Sample



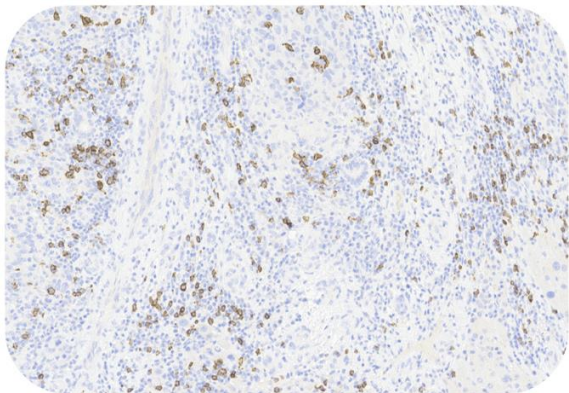
Recombinant Monoclonal Anti-CD20 Antibody, Mouse (6C8)

Catalog # HGS-S241



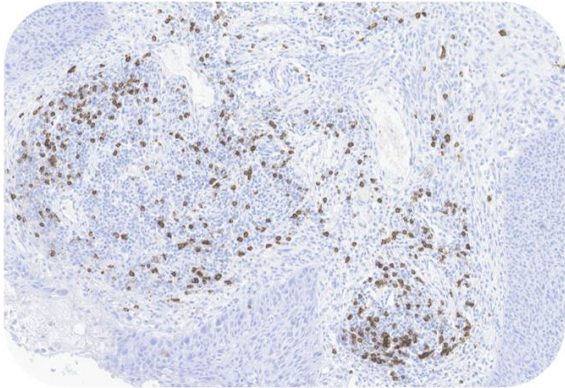
Immunohistochemistry (Formalin/PFA-fixed paraffin-embedded sections) -Recombinant Monoclonal Anti-CD20 Antibody, Mouse (6C8) (HGS-S241)

Human Lung Cancer, 20X



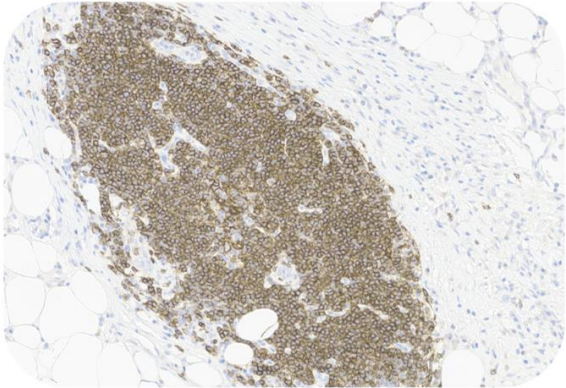
Immunohistochemistry (Formalin/PFA-fixed paraffin-embedded sections) -Recombinant Monoclonal Anti-CD20 Antibody, Mouse (6C8) (HGS-S241)

Human Liver Cancer, 20X



Immunohistochemistry (Formalin/PFA-fixed paraffin-embedded sections) -Recombinant Monoclonal Anti-CD20 Antibody, Mouse (6C8) (HGS-S241)

Human Cervical Cancer, 20X



Immunohistochemistry (Formalin/PFA-fixed paraffin-embedded sections) -Recombinant Monoclonal Anti-CD20 Antibody, Mouse (6C8) (HGS-S241)

Human Colorectal Cancer, 20X

Immunohistochemical analysis of paraffin embedded human cancer tissue labelled with HGS-S241 at 1/500 dilution.
Perform heat mediated antigen retrieval with Tris/EDTA buffer pH 9.0 before commencing with IHC staining protocol.

