

Background

Recombinant Monoclonal Anti-CD31 Antibody, Mouse (1G6) is a CD31 primary antibody for IHC application. CD31 is expressed on platelets and on most leukocytes and is constitutively present on endothelial linings in vivo. CD31 mediates adhesion through homophilic interaction; however, a heparin-binding consensus sequence (LKREKN) on domain 2 may mediate heterophilic interaction with cell-surface or extracellular matrix proteoglycans.

Key parameter

Host Species	Mouse
Isotype	IgG
Clone	1G6
Application	IHC
Property	1: 1000
State	Liquid
Positive Control	Human Tonsil Tissues
Clonality	Monoclonal
Research Field	Cancer Drug Targets
Source	Mouse
Synonym	CD31

Experiment Protocol

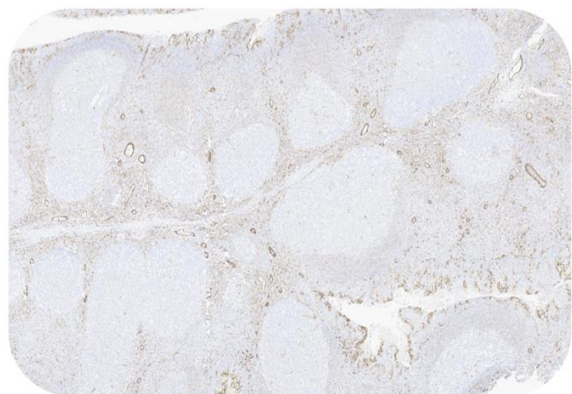
LEICA Experiment Protocol(Manual)

Storage

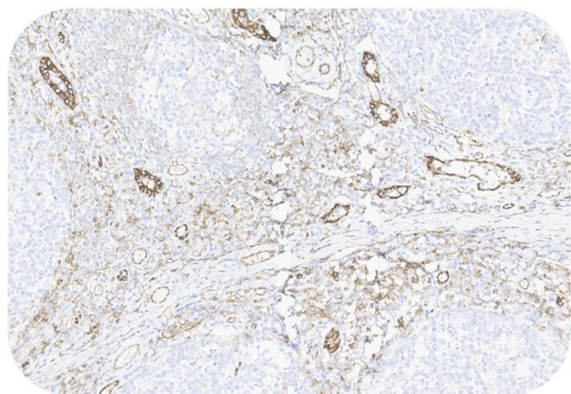
Shipped at 4°C. Store at +4°C short term (1-2 weeks). Upon delivery aliquot. Store at -20°C long term. Avoid freeze / thaw cycle. The shelf life is 30 days from the date of opening.

Typical Data

Control Sample



Immunohistochemistry (Formalin/PFA-fixed paraffin-embedded sections) -Recombinant Monoclonal Anti-CD31 Antibody, Mouse (1G6) (HGS-S245)
Human Tonsil Tissue, 4X



Immunohistochemistry (Formalin/PFA-fixed paraffin-embedded sections) -Recombinant Monoclonal Anti-CD31 Antibody, Mouse (1G6) (HGS-S245)
Human Tonsil Tissue 20X

Immunohistochemical analysis of paraffin embedded Human tonsil tissue labelled with HGS-S245 at 1/1000 dilution.

Perform heat mediated antigen retrieval with Tris/EDTA buffer pH 9.0 before commencing with IHC staining protocol.

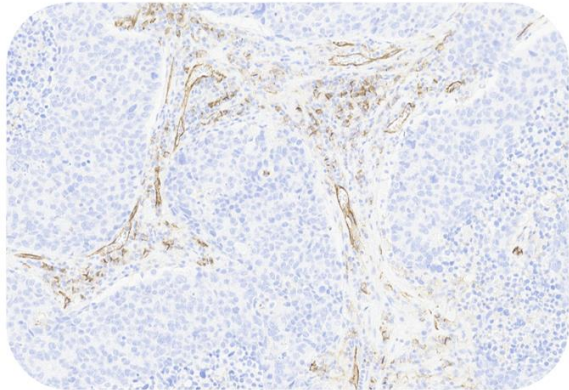
Cancer Sample

Discounts, Gifts,
and more!



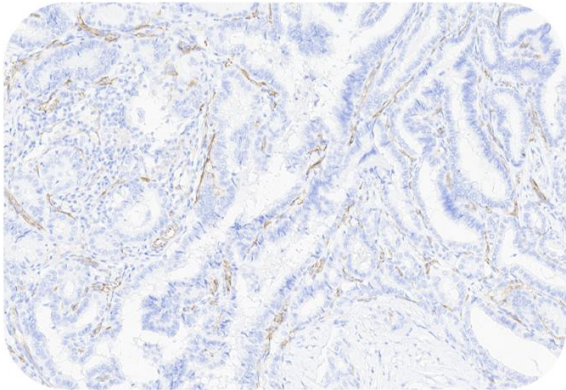
Recombinant Monoclonal Anti-CD31 Antibody, Mouse (1G6)

Catalog # HGS-S245



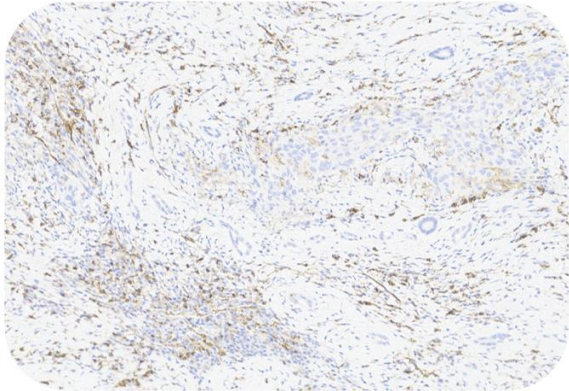
Immunohistochemistry (Formalin/PFA-fixed paraffin-embedded sections) -Recombinant Monoclonal Anti-CD31 Antibody, Mouse (1G6) (HGS-S245)

Human Lung Cancer, 20X



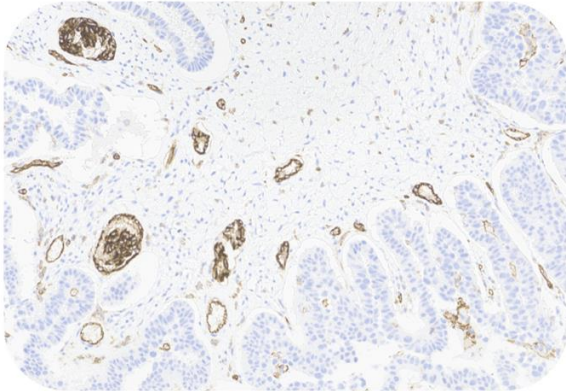
Immunohistochemistry (Formalin/PFA-fixed paraffin-embedded sections) -Recombinant Monoclonal Anti-CD31 Antibody, Mouse (1G6) (HGS-S245)

Human Thyroid cancer, 20X



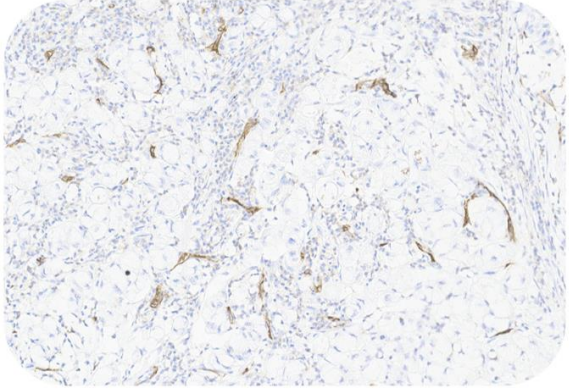
Immunohistochemistry (Formalin/PFA-fixed paraffin-embedded sections) -Recombinant Monoclonal Anti-CD31 Antibody, Mouse (1G6) (HGS-S245)

Human Liver Cancer, 20X



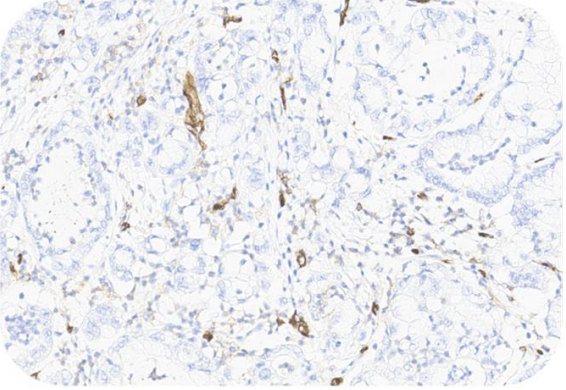
Immunohistochemistry (Formalin/PFA-fixed paraffin-embedded sections) -Recombinant Monoclonal Anti-CD31 Antibody, Mouse (1G6) (HGS-S245)

Human Ovarian Cancer, 20X



Immunohistochemistry (Formalin/PFA-fixed paraffin-embedded sections) -Recombinant Monoclonal Anti-CD31 Antibody, Mouse (1G6) (HGS-S245)

Human Pancreatic cancer, 20X



Immunohistochemistry (Formalin/PFA-fixed paraffin-embedded sections) -Recombinant Monoclonal Anti-CD31 Antibody, Mouse (1G6) (HGS-S245)

Human Pancreatic cancer, 20X

Immunohistochemical analysis of paraffin embedded human cancer tissue labelled with HGS-S245 at 1/1000 dilution.
Perform heat mediated antigen retrieval with Tris/EDTA buffer pH 9.0 before commencing with IHC staining protocol.

