

Background

Recombinant Monoclonal Anti-CD44 Antibody, Rabbit (5G3) is a CD44 primary antibody for IHC application. CD44 is a cell surface glycoprotein and participates in cell-cell interaction, cell adhesion and migration.CD44 is a major cell surface receptor for hyaluronan, a component of the extracellular matrix, and it also interacts with osteopontin (OPN), collagen, and laminin.

Key parameter

Host Species	Rabbit
Isotype	IgG
Clone	5G3
Application	IHC
Property	1: 500
State	Liquid
Positive Control	Human Tonsil Tissues
Clonality	Monoclonal
Research Field	Cancer Drug Targets
Source	Rabbit
Synonym	CD44

Experiment Protocol

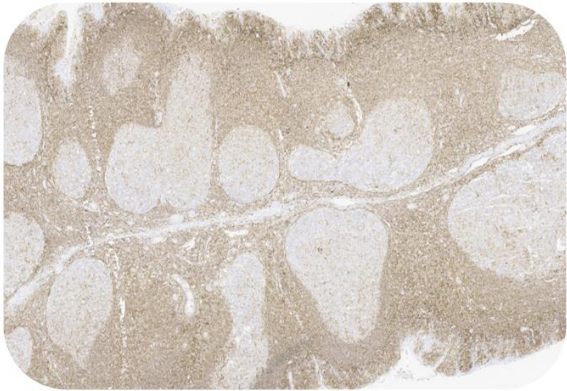
LEICA Experiment Protocol(Manual)

Storage

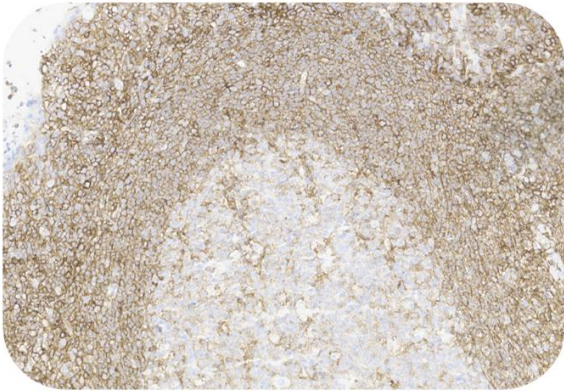
Shipped at 4°C. Store at +4°C short term (1-2 weeks). Upon delivery aliquot. Store at -20°C long term. Avoid freeze / thaw cycle. The shelf life is 30 days from the date of opening.

Typical Data

Control Sample



Immunohistochemistry (Formalin/PFA-fixed paraffin-embedded sections) -Recombinant Monoclonal Anti-CD44 Antibody, Rabbit (5G3) (HGS-S246)
Human Tonsil Tissue, 4X



Immunohistochemistry (Formalin/PFA-fixed paraffin-embedded sections) -Recombinant Monoclonal Anti-CD44 Antibody, Rabbit (5G3) (HGS-S246)
Human Tonsil Tissue 20X

Immunohistochemical analysis of paraffin embedded Human tonsil tissue labelled with HGS-S246 at 1/500 dilution.

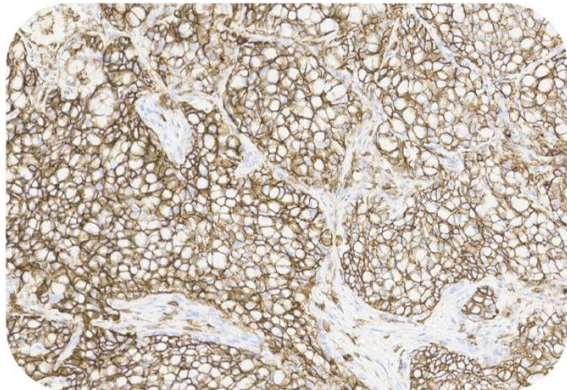
Perform heat mediated antigen retrieval with Tris/EDTA buffer pH 9.0 before commencing with IHC staining protocol.

Cancer Sample



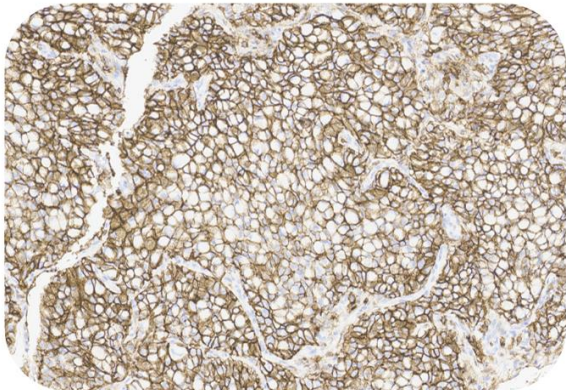
Recombinant Monoclonal Anti-CD44 Antibody, Rabbit (5G3)

Catalog # HGS-S246



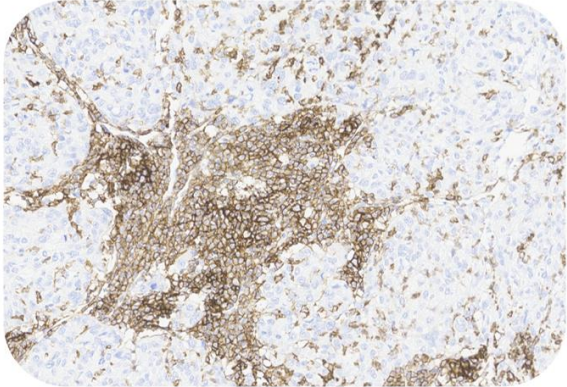
Immunohistochemistry (Formalin/PFA-fixed paraffin-embedded sections) -Recombinant Monoclonal Anti-CD44 Antibody, Rabbit (5G3) (HGS-S246)

Human Lung Cancer, 20X



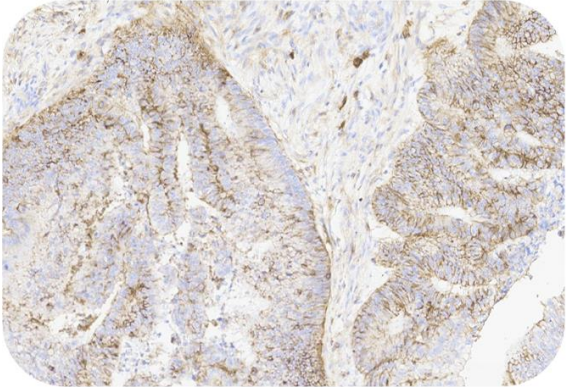
Immunohistochemistry (Formalin/PFA-fixed paraffin-embedded sections) -Recombinant Monoclonal Anti-CD44 Antibody, Rabbit (5G3) (HGS-S246)

Human Lung Cancer, 20X



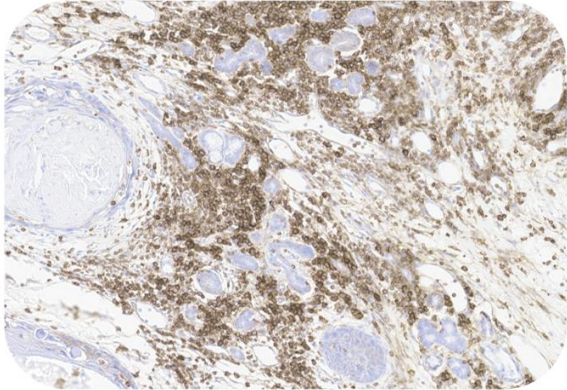
Immunohistochemistry (Formalin/PFA-fixed paraffin-embedded sections) -Recombinant Monoclonal Anti-CD44 Antibody, Rabbit (5G3) (HGS-S246)

Human Liver Cancer, 20X



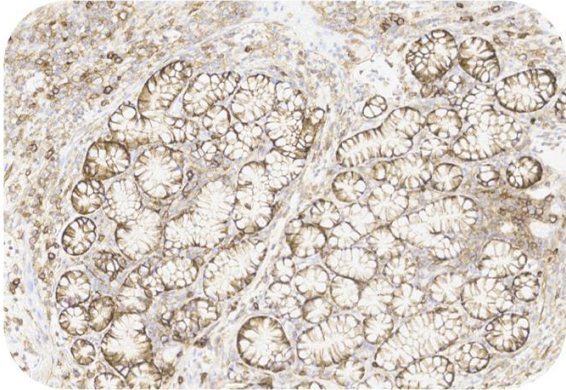
Immunohistochemistry (Formalin/PFA-fixed paraffin-embedded sections) -Recombinant Monoclonal Anti-CD44 Antibody, Rabbit (5G3) (HGS-S246)

Human Colorectal Cancer, 20X



Immunohistochemistry (Formalin/PFA-fixed paraffin-embedded sections) -Recombinant Monoclonal Anti-CD44 Antibody, Rabbit (5G3) (HGS-S246)

Human HNSCC, 20X



Immunohistochemistry (Formalin/PFA-fixed paraffin-embedded sections) -Recombinant Monoclonal Anti-CD44 Antibody, Rabbit (5G3) (HGS-S246)

Human Pancreatic Cancer, 20X

Immunohistochemical analysis of paraffin embedded human cancer tissue labelled with HGS-S246 at 1/500 dilution.
Perform heat mediated antigen retrieval with Tris/EDTA buffer pH 9.0 before commencing with IHC staining protocol.

