

Background

Recombinant Monoclonal Anti-CD45(LCA) Antibody, Mouse (3G2) is a CD45 primary antibody for IHC application. CD45 is an evolutionary highly conserved receptor protein tyrosine phosphatase exclusively expressed on all nucleated cells of the hematopoietic system. It is characterized by the expression of several isoforms, specific to a certain cell type and the developmental or activation status of the cell.

Key parameter

Host Species	Mouse
Isotype	IgG
Clone	3G2
Application	IHC
Property	1: 500
State	Liquid
Positive Control	Human Tonsil Tissues
Clonality	Monoclonal
Research Field	Cancer Drug Targets
Source	Mouse
Synonym	CD45 (LCA)

Experiment Protocol

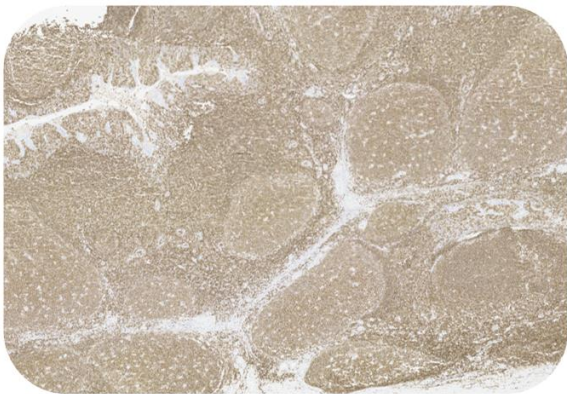
[LEICA Experiment Protocol\(Manual\)](#)

Storage

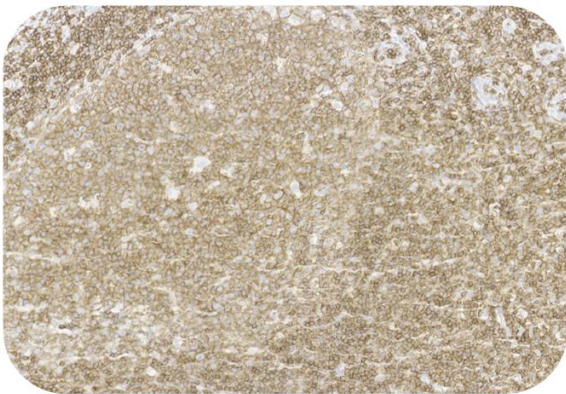
Shipped at 4°C. Store at +4°C short term (1-2 weeks). Upon delivery aliquot. Store at -20°C long term. Avoid freeze / thaw cycle. The shelf life is 30 days from the date of opening.

Typical Data

Control Sample



Immunohistochemistry (Formalin/PFA-fixed paraffin-embedded sections) -Recombinant Monoclonal Anti-CD45(LCA) Antibody, Mouse (3G2) (HGS-S247)
Human Tonsil Tissue, 4X



Immunohistochemistry (Formalin/PFA-fixed paraffin-embedded sections) -Recombinant Monoclonal Anti-CD45(LCA) Antibody, Mouse (3G2) (HGS-S247)
Human Tonsil Tissue 20X

Immunohistochemical analysis of paraffin embedded Human tonsil tissue labelled with HGS-S247 at 1/500 dilution.

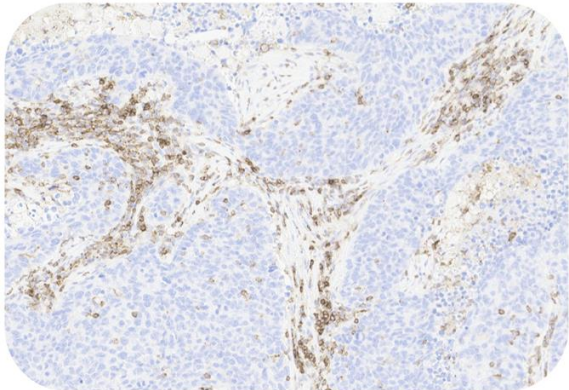
Perform heat mediated antigen retrieval with Tris/EDTA buffer pH 9.0 before commencing with IHC staining protocol.

Cancer Sample



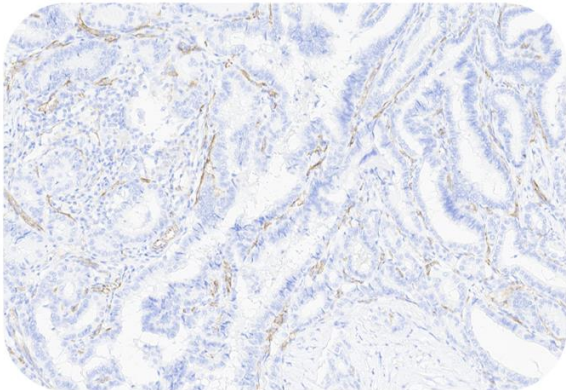
Recombinant Monoclonal Anti-CD45(LCA) Antibody, Mouse (3G2)

Catalog # HGS-S247



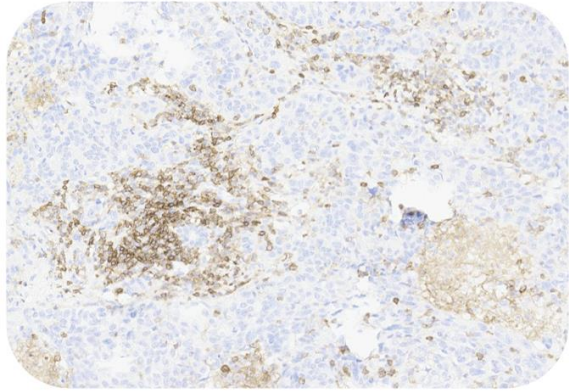
Immunohistochemistry (Formalin/PFA-fixed paraffin-embedded sections) -Recombinant Monoclonal Anti-CD45(LCA) Antibody, Mouse (3G2) (HGS-S247)

Human Lung Cancer, 20X



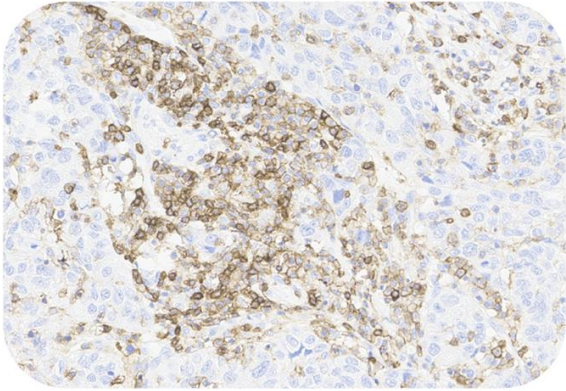
Immunohistochemistry (Formalin/PFA-fixed paraffin-embedded sections) -Recombinant Monoclonal Anti-CD45(LCA) Antibody, Mouse (3G2) (HGS-S247)

Human Thyroid cancer, 20X



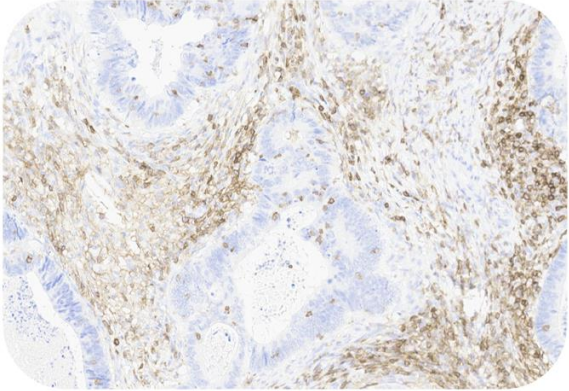
Immunohistochemistry (Formalin/PFA-fixed paraffin-embedded sections) -Recombinant Monoclonal Anti-CD45(LCA) Antibody, Mouse (3G2) (HGS-S247)

Human Liver Cancer, 20X



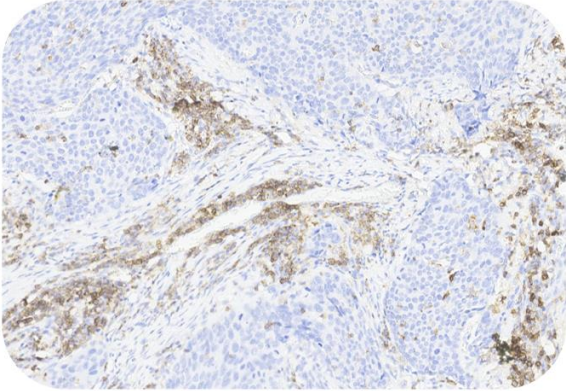
Immunohistochemistry (Formalin/PFA-fixed paraffin-embedded sections) -Recombinant Monoclonal Anti-CD45(LCA) Antibody, Mouse (3G2) (HGS-S247)

Human Liver Cancer, 20X



Immunohistochemistry (Formalin/PFA-fixed paraffin-embedded sections) -Recombinant Monoclonal Anti-CD45(LCA) Antibody, Mouse (3G2) (HGS-S247)

Human Colorectal Cancer, 20X



Immunohistochemistry (Formalin/PFA-fixed paraffin-embedded sections) -Recombinant Monoclonal Anti-CD45(LCA) Antibody, Mouse (3G2) (HGS-S247)

Human Esophageal Cancer, 20X

Immunohistochemical analysis of paraffin embedded human cancer tissue labelled with HGS-S247 at 1/500 dilution.
Perform heat mediated antigen retrieval with Tris/EDTA buffer pH 9.0 before commencing with IHC staining protocol.

