

Background

Recombinant Monoclonal Anti-CD5 Antibody, Rabbit (4G5) is a CD5 primary antibody for IHC application. CD5 is present on all mature T-lymphocytes, on most of thymocytes and on many T-cell leukemias and lymphomas. CD5 also reacts with a subpopulation of activated B-cells and may act as a receptor in regulating T-cell proliferation. CD5 is found on 95% of thymocytes and 72% of peripheral blood lymphocytes. In lymph nodes, the main reactivity is observed in T cell areas. CD5 is expressed by many T cell leukemia, lymphomas, and activated T cells. Diseases associated with CD5 dysfunction include thymus cancer and Richter's Syndrome.

Key parameter

Host Species	Rabbit
Isotype	IgG
Clone	4G5
Application	IHC
Property	1: 1000
State	Liquid
Positive Control	Human Tonsil Tissues
Clonality	Monoclonal
Research Field	Cancer Drug Targets
Source	Rabbit
Synonym	CD5

Experiment Protocol

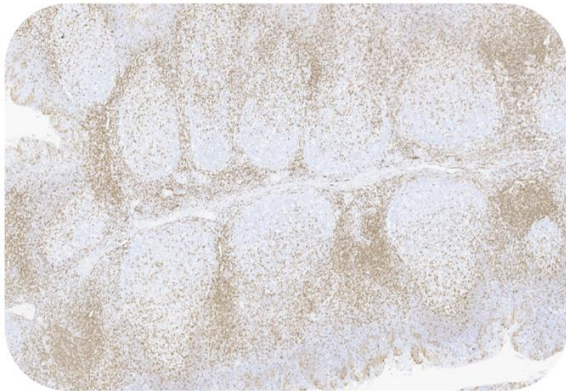
LEICA Experiment Protocol(Manual)

Storage

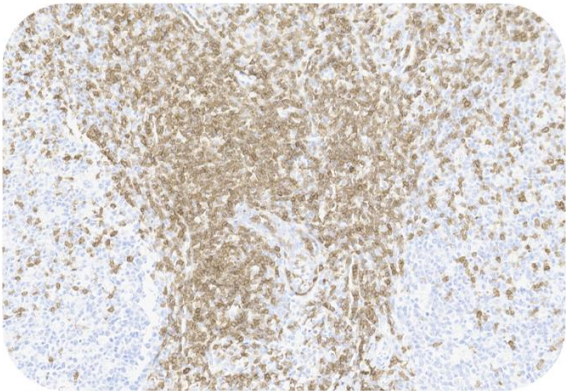
Shipped at 4°C. Store at +4°C short term (1-2 weeks). Upon delivery aliquot. Store at -20°C long term. Avoid freeze / thaw cycle. The shelf life is 30 days from the date of opening.

Typical Data

Control Sample



Immunohistochemistry (Formalin/PFA-fixed paraffin-embedded sections) -Recombinant Monoclonal Anti-CD5 Antibody, Rabbit (4G5) (HGS-S250)  
Human Tonsil Tissue, 4X



Immunohistochemistry (Formalin/PFA-fixed paraffin-embedded sections) -Recombinant Monoclonal Anti-CD5 Antibody, Rabbit (4G5) (HGS-S250)  
Human Tonsil Tissue 20X

Discounts, Gifts,  
and more!



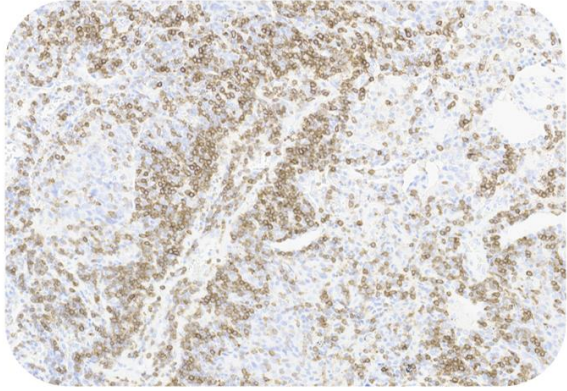
Recombinant Monoclonal Anti-CD5 Antibody, Rabbit (4G5)

Catalog # HGS-S250

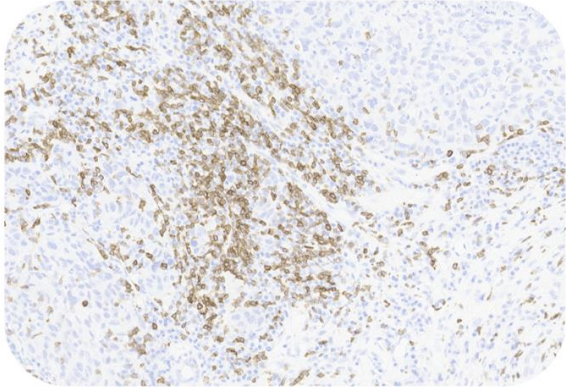


Immunohistochemical analysis of paraffin embedded Human tonsil tissue labelled with HGS-S250 at 1/1000 dilution.  
Perform heat mediated antigen retrieval with Tris/EDTA buffer pH 9.0 before commencing with IHC staining protocol.

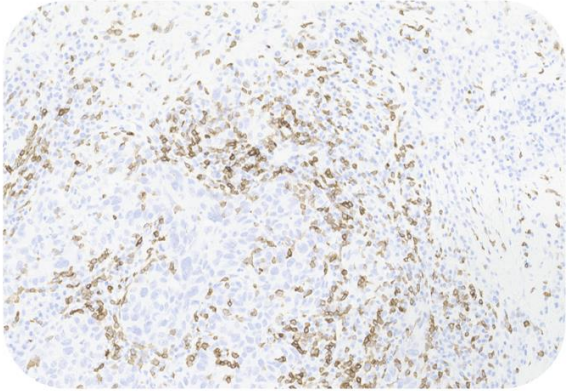
Cancer Sample



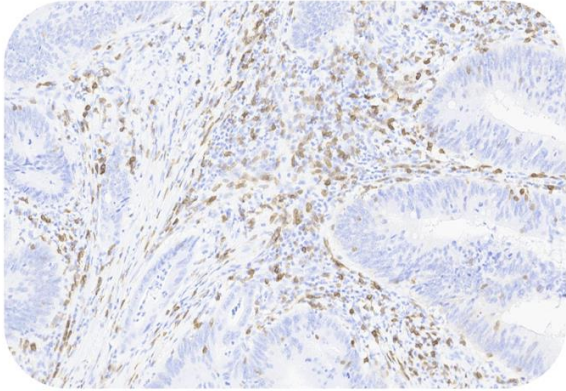
Immunohistochemistry (Formalin/PFA-fixed paraffin-embedded sections) -Recombinant Monoclonal Anti-CD5 Antibody, Rabbit (4G5) (HGS-S250)  
Human Lung Cancer, 20X



Immunohistochemistry (Formalin/PFA-fixed paraffin-embedded sections) -Recombinant Monoclonal Anti-CD5 Antibody, Rabbit (4G5) (HGS-S250)  
Human Liver Cancer, 20X



Immunohistochemistry (Formalin/PFA-fixed paraffin-embedded sections) -Recombinant Monoclonal Anti-CD5 Antibody, Rabbit (4G5) (HGS-S250)  
Human Liver Cancer, 20X



Immunohistochemistry (Formalin/PFA-fixed paraffin-embedded sections) -Recombinant Monoclonal Anti-CD5 Antibody, Rabbit (4G5) (HGS-S250)  
Human Colorectal Cancer, 20X

Immunohistochemical analysis of paraffin embedded human cancer tissue labelled with HGS-S250 at 1/1000 dilution.  
Perform heat mediated antigen retrieval with Tris/EDTA buffer pH 9.0 before commencing with IHC staining protocol.

